



## Blackheath Hill, SE10

£425,000

A well presented two bedroom purpose built flat in a sought after location which would make an ideal first purchase. The flat further benefits from a private balcony, modern finish, concierge services and a private parking space.

Blackheath Hill offers a quick commute to Canary Wharf, London Bridge, Cannon Street, and Kings Cross via the Greenwich Mainline and DLR Station. Greenwich Park and Greenwich Market are a short walk away and offer a variety of local stores, restaurants, and bars for residents to enjoy.

### Features

- O.I.E.O
- Chain Free
- No Work Required
- Sought After Location
- Private Balcony
- Private Parking Space

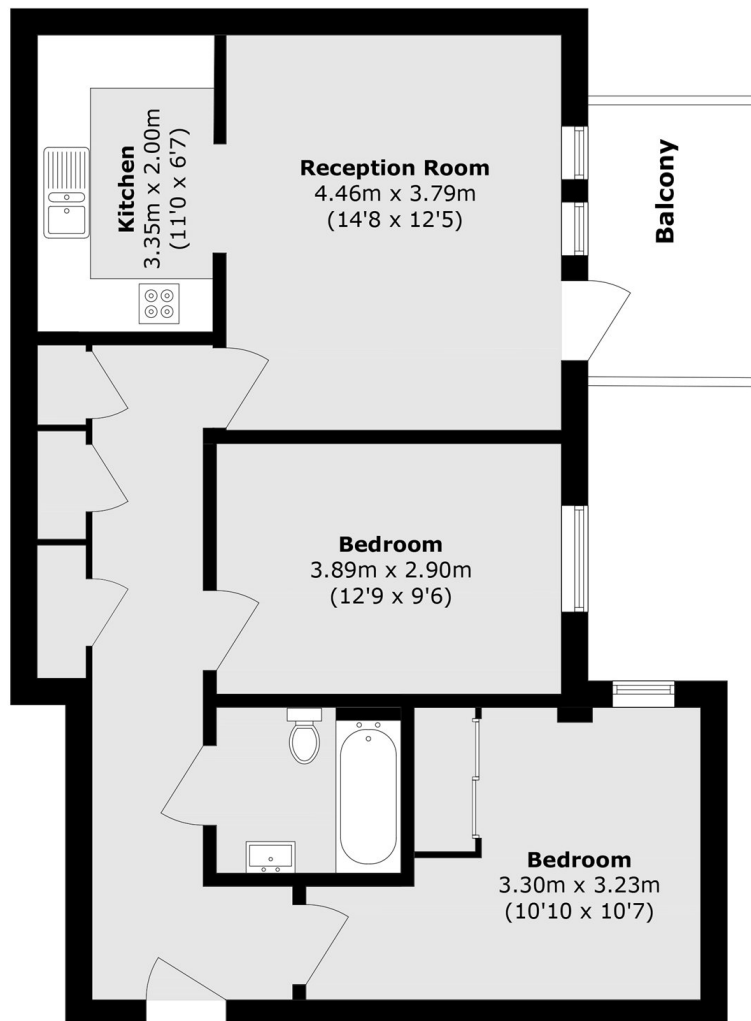


Blackheath Hill, SE10





# Blackheath Hill, London, SE10



Total area (approx.): 67.2 sq. m (723.3 sq. ft)

Balcony area (approx.): 5.7 sq. m (61.3 sq. ft)