



Price

£300,000

Freehold

3x  1x  2x 

**Hodgson Crescent,
Snodland, Kent, ME6**

OVER 60?

Secure this property
for up to **59% less!**



Wards
Helping you move forwards



Main features

- **Extremely well kept family home in a peaceful location**
- **Handy garage to the rear, making parking easy when you return home**
- **The bedrooms are all good sizes**
- **Nicely finished kitchen which offers plenty of space for any budding chef**
- **Offered chain free, so this could be yours sooner than you think**

Accommodation

GROUND FLOOR

Entrance Hall
Cloakroom
Lounge: 12'10 x 11'9 (3.91m x 3.58m)
Dining Room: 9'6 x 8'10 (2.90m x 2.69m)
Kitchen: 10'8 x 9'9 (3.25m x 2.97m)

FIRST FLOOR

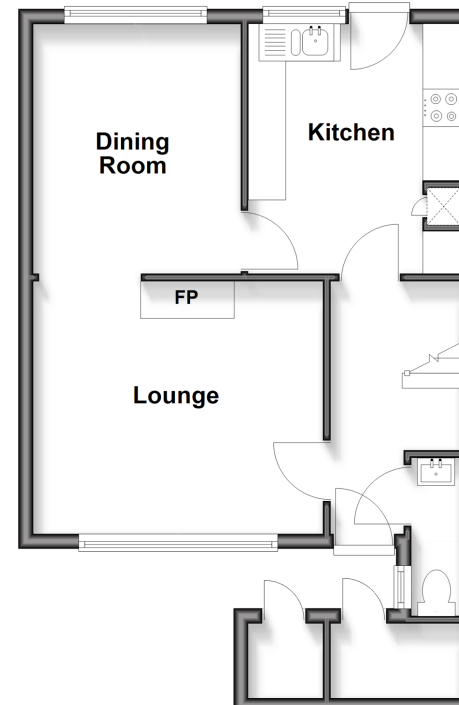
Landing
Bedroom 1: 11'8 x 10'4 (3.56m x 3.15m)
Bedroom 2 : 12'2 x 8'5 (3.71m x 2.57m)
Bedroom 3: 8'10 x 8'5 (2.69m x 2.57m)
Bathroom: 6'7 x 5'6 (2.01m x 1.68m)

OUTSIDE

Front and Rear Gardens
Garage to Rear

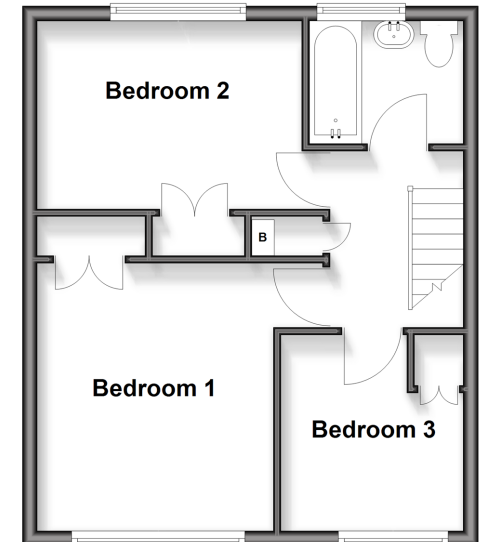
Ground Floor

Approx. 42.6 sq. metres (458.5 sq. feet)



First Floor

Approx. 39.0 sq. metres (419.6 sq. feet)



Call Snodland - 01634 245055 ■ wardsofKent.co.uk

■ Legal advice should be taken to verify fixtures/fittings, planning, alterations and/or lease details
■ Through a Homewise Home For Life Plan people aged 60+ can secure this property for up to 50% less, by purchasing a Lifetime Lease.

■ Appliances & services are untested, dimensions are approximate and floor plans are not to scale



13821772/20250923/CG/LK