





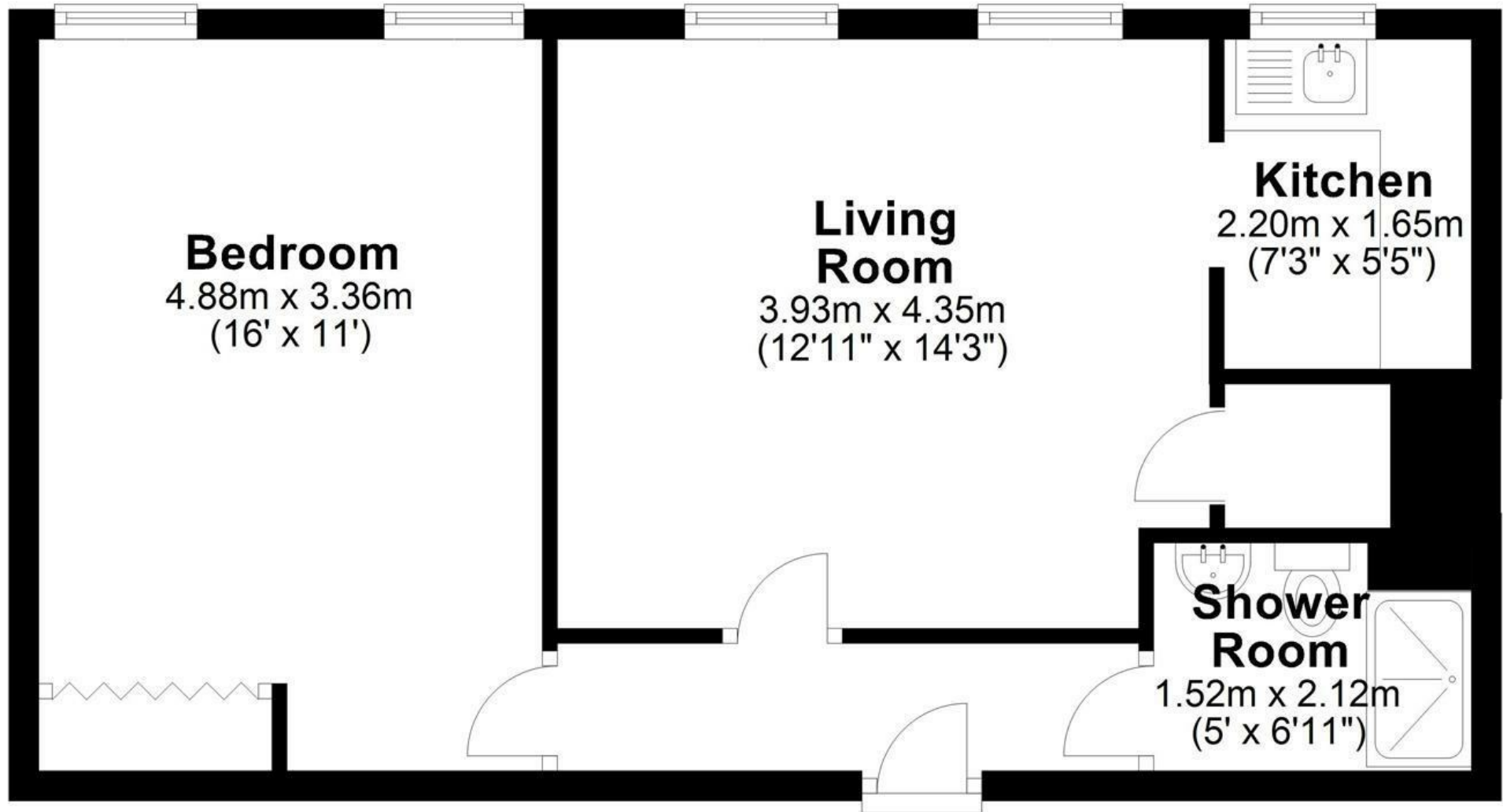
**\*\*OVER 60s ACCOMMODATION\*\*** NEXA Properties are pleased to introduce this one bedroom retirement apartment in Homesea House, Green Road. The apartment features a modern kitchen, new shower-room and generously sized lounge and double bedroom. Communally, the block features well managed gardens, a lounge with games area, laundry-room, guest facilities and ample off-road parking. This flat is available from July.

- OVER 60s  
ACCOMMODATION
- FIRST FLOOR  
APARTMENT
- RESIDENT  
MANAGEMENT STAFF
- WHEELCHAIR  
ACCESSIBLE
- COMMUNAL LIFT
- LAUNDRY ROOM
- LOUNGE AND GAMES  
AREA
- SOUGHT AFTER  
LOCATION
- MODERN APARTMENT
- AVAILABLE JULY



# Ground Floor

Approx. 46.0 sq. metres (495.4 sq. feet)



Measurements are approximate. Not to Scale. Illustrative purposes only.  
Plan produced using PlanUp.

**46 homesea house**