



Sinclair Road W14



Sinclair Road W14

2 BEDROOMS
SPACIOUS AND LIGHT RECEPTION
FITTED KITCHEN
TOP FLOOR
CLOSE TO TRANSPORT
AVAILABLE 20TH MAY
FURNISHED
COUNCIL TAX BAND D
NOT AVAILABLE TO SHARERS

Excellent 2 bedroom flat on the top floor of a Victorian conversion, with a large reception, separate fitted kitchen and family bathroom. Located close to the transport links at Shepherd's Bush and the overground at Kensington Olympia. Available 20th May, furnished. This property is not available to sharers.

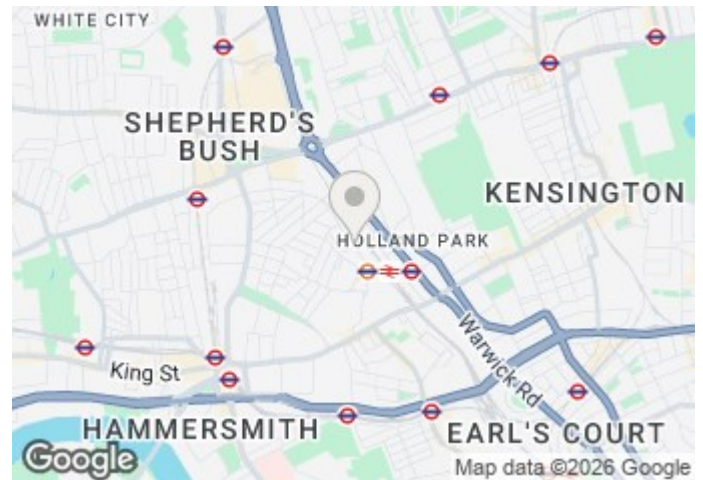
£500 PER WEEK

SUBJECT TO CONTRACT





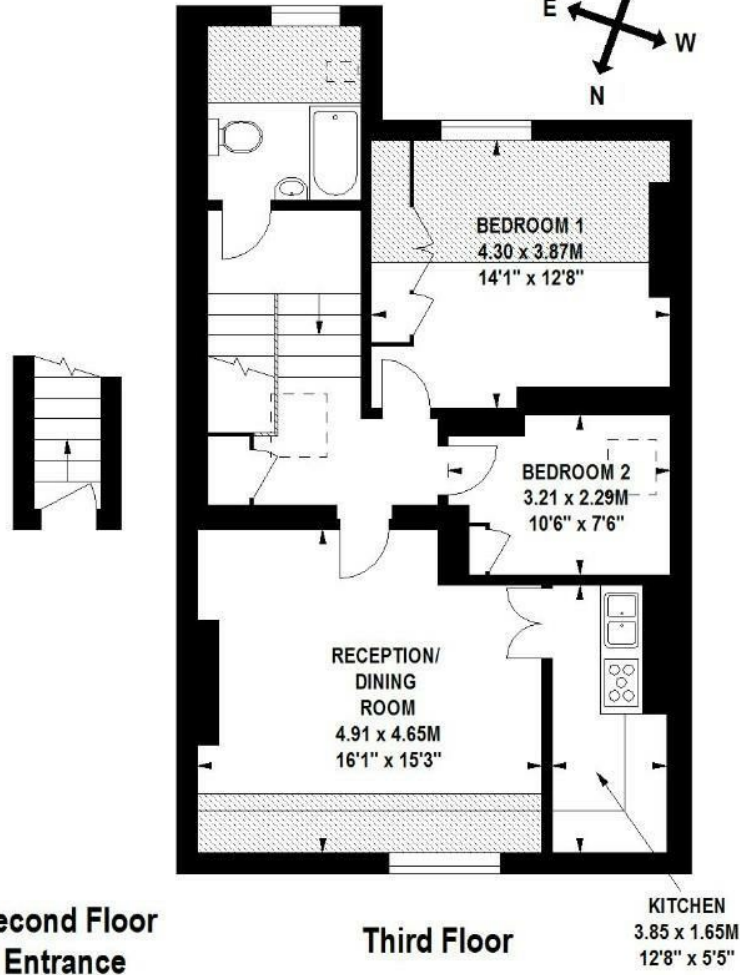
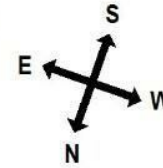




Sinclair Road, W14

Approximate gross internal area
71 sq m / 764 sq ft

 Under 1.5m head height



Floor Plan produced for Finlay Brewer by Mays Floorplans © . Tel 020 3397 4594

Illustration for identification purposes only, not to scale

All measurements are maximum, and include wardrobes and window bays where applicable