



Eaton Mews North  
Belgravia, SW1X

CHESTERTONS





Beautifully presented mews house located on a private street in the heart of Belgravia. The house is arranged over an approximate 3,271 sq ft and offers features that include an impressive first floor reception, private garage, and off street parking.

The accommodation is presented over four floors and includes a spacious double reception/kitchen and Juliet balconies. On the top level of the house are two large bedrooms with en-suit bathrooms, utility room, and a guest W/C.

There are a further three double bedrooms, three bathrooms, and a second reception room located on the ground and lower ground floors. The additional reception space would be ideal for use as an office area, gym or playroom.

Eaton Mews North is located in the highly sought after Belgravia area, just a couple of minutes' walk from Hyde Park, Sloane Square and Victoria. Also in close walking distance is the popular shopping experience offered on Brompton Road and Harrods.

- House
- Quiet mews
- Wooden floors
- Off street parking
- Garage
- Prime Belgravia location

**£12,783.33 pcm**

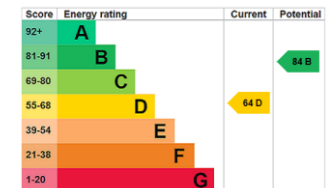
Additional tenant charges apply (fees apply to non-AST tenancies only)

Tenancy Agreement Fee: £300

References per Tenant/Guarantor: £60

Inventory check (approx. £100 – £250 inc. VAT)

[chestertons.co.uk/property-to-rent/applicable-fees](http://chestertons.co.uk/property-to-rent/applicable-fees)



**Minimum Term:** 12 months  
**Deposit Required:** 6 weeks  
**Local Authority:** City Of Westminster  
**Council Tax Band:** H  
**EPC Rating:** D  
**Furnished, Part Furnished, Unfurnished**

*Chestertons Knightsbridge & Belgravia Lettings*

31 Lowndes Street  
 London  
 SW1X 9HX

[knightsbridgelettingsusers@chestertons.co.uk](mailto:knightsbridgelettingsusers@chestertons.co.uk)  
 02072353530  
[chestertons.co.uk](http://chestertons.co.uk)

Eaton Mews North, SW1X

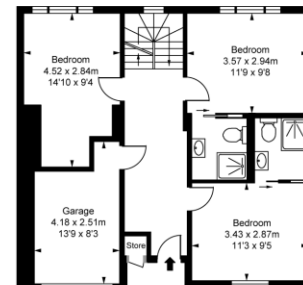
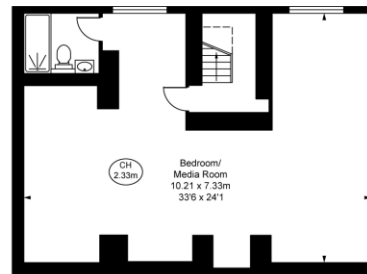
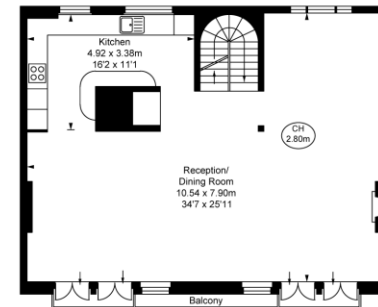
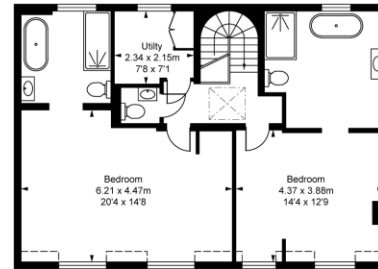
Approximate Gross Internal Area  
298.98 sq m / 3,218 sq ft

Store  
0.38 sq m / 4 sq ft

Total Areas Shown On Plan  
299.36 sq m / 3,222 sq ft

(Including restricted height  
under 1.5m (-----))

(CH = Ceiling Heights)



This plan is made to scale in the guidelines and with reasonable accuracy.  
All measurements and areas are approximate only. Each floor area should be checked against the floor plan and the actual floor area of the property.  
© Property Performance

Chesterton UK Services Limited trading as Chestertons for themselves and for the vendor of this property whose agents they are, give notice that (i) these particulars do not constitute any part of an offer or contract, (ii) all statements contained within these particulars are made without responsibility on the part of Chestertons or the vendor, (iii) whilst made in good faith, none of the statements contained within these particulars are to be relied upon as a statement or representation of fact, (iv) any intending purchasers must satisfy themselves by inspection or otherwise as to the correctness of each of the statements contained within these particulars, (v) the vendor does not make or give either Chestertons or any person in their employment any authority to make or give representation or warranty whatsoever in relation to this property. Wide angle lenses may be used. ©Copyright Chestertons | Chesterton Global Ltd | Registered Office 5th Floor, The Lantern, 75 Hampstead Road, London, NW1 2PL. Registered Company Number 05334580.



This paper is  
100% recyclable