



2 Bed
Flat
located in

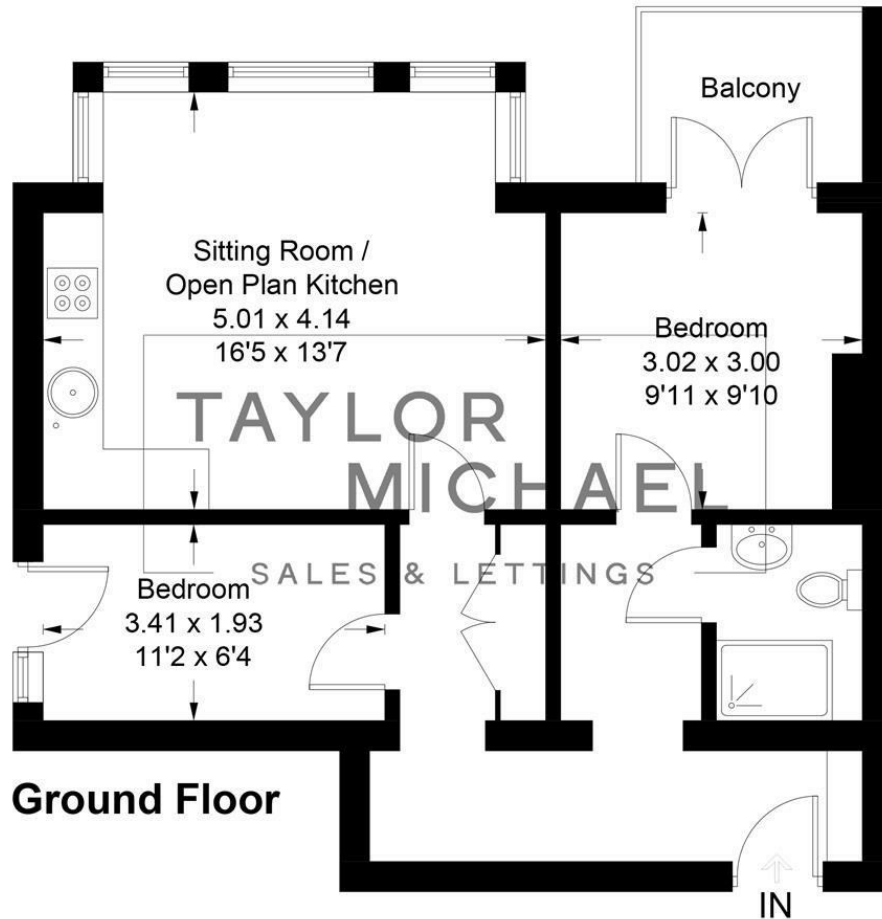
£1,400



TAYLOR
MICHAEL

St. Aubyns, Hove, BN3 2TH

Approximate Gross Internal Area = 53.2 sq m / 573 sq ft



Ground Floor

Illustration for identification purposes only, measurements are approximate, not to scale.
Imageplansurveys @ 2026

DIRECTIONS

CONTACT

62 Church Road
Hove
East Sussex
BN3 2FP

E: lettings@taylormichael.agency
T: 01273 600100
<https://taylormichael.agency/>

Energy Efficiency Rating		Current	Potential
Very energy efficient - lower running costs			
(92 plus)	A		
(81-91)	B		
(69-80)	C		78
(55-68)	D		
(39-54)	E	53	
(21-38)	F		
(1-20)	G		
Not energy efficient - higher running costs			
England & Wales		EU Directive 2002/91/EC	

**TAYLOR
MICHAEL**