



## Corringway, W5

£1,299,999

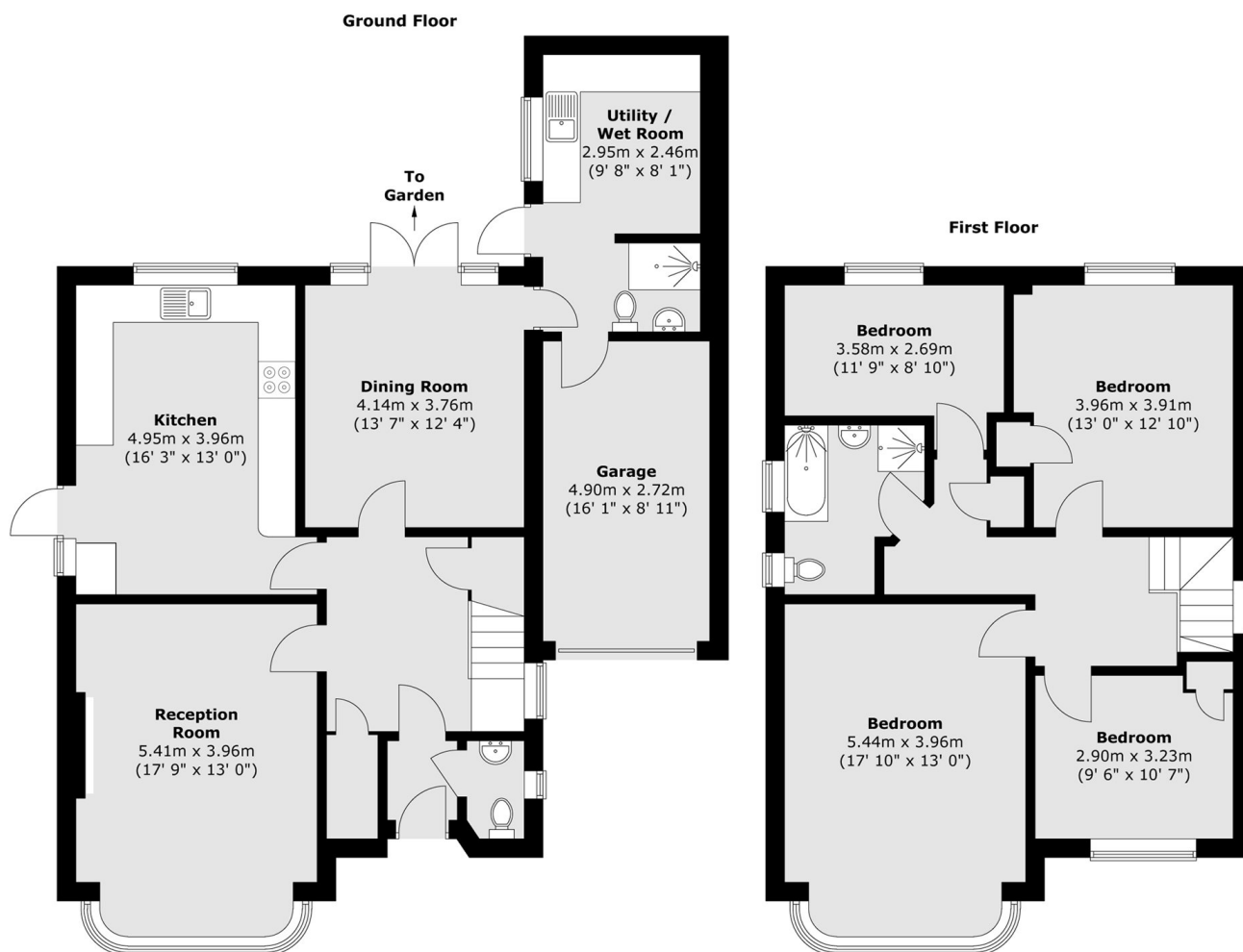
This classic four-bedroom Haymills home offers circa 1,850 sq ft of living space, featuring two reception rooms, a utility/wet room, and a side garage. The property has a generous 90ft rear garden and significant scope to add value through a rear extension or loft conversion (STPP). With a large forecourt for multiple cars, it's a perfect blank canvas for a bespoke family upgrade.

Located in the prestigious Hanger Hill East Conservation Area, this home is surrounded by top-tier schools including St Augustine's, Ada Lovelace, and the Japanese School. You are perfectly placed for commuting with four tube stations nearby. It is a rare opportunity to secure a substantial home in a quiet, highly sought-after enclave.

### Features

- Detached House
- Four Bedrooms
- Two Bathrooms
- Two Reception Rooms
- Garage And Utility
- Generous Garden

# Corringway, London, W5



Total area (approx.) : 170.8 sq. m (1838 sq. ft)