



# Alma Road, Reigate

Offers In Excess Of £285,000





Ashfields offers far more than just an apartment, it provides the reassurance of independent living within a friendly, welcoming community. With excellent communal facilities, beautifully maintained surroundings and support available when needed, it's a place to enjoy peace of mind, make friendships and truly feel at home.





This thoughtfully designed retirement apartment enjoys an enviable position just a short stroll from Reigate station, the cafés and restaurants of Holmesdale Road, and a range of local shops, making everyday amenities effortlessly accessible. The Ashfields development is surrounded by beautifully maintained communal gardens, offering a choice of peaceful places to unwind, enjoy the fresh air, or catch up with friends and neighbours.

Stepping inside, you'll immediately appreciate the excellent condition of the apartment. Beautifully presented throughout, it has been enhanced with a stylish new kitchen and elegantly refurbished bathrooms, creating a home that is ready to move straight into.

Designed with both style and practicality in mind, the kitchen provides generous worktop space and ample storage, making it ideal for keen cooks and everyday living alike. A window overlooking the rear of the development fills the room with natural light, while fitted appliances and space for additional white goods enhance both its functionality and versatility, creating a well-appointed space perfectly suited to modern living.

The lounge is bright and welcoming, offering plenty of room for comfortable seating as well as a dining area, making it an ideal space for relaxing or entertaining. Both bedrooms are excellent-sized doubles, with the principal bedroom benefiting from fitted wardrobes and a private en-suite shower room. The second bedroom is equally versatile and could be used as a guest room, home office or separate dining room to suit your lifestyle.

The beautifully refurbished bathrooms complete the accommodation, finished to a high specification with sleek fixtures and fittings that further enhance the apartment's turnkey appeal.



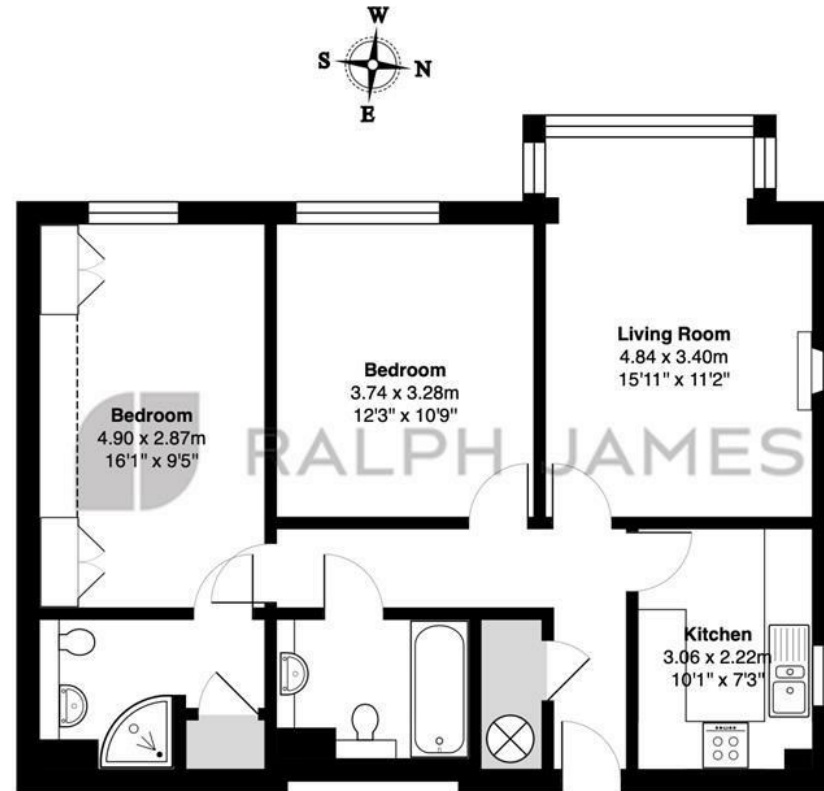
## Need to know

- A beautifully presented two-bedroom retirement apartment located in one of Reigate's most popular roads, a short walk from local shops and the train station.
- On-site Estate Manager on hand and emergency cords throughout the apartment.
- Located on the second floor, accessed by a lift for ease and convenience.
- Sizeable lounge with a large West-facing window, flooding the room with afternoon and evening sun.
- Two re-fitted bathrooms with an en-suite shower room to the main bedroom.
- Plenty of residents and visitors parking for those that require it.
- A welcoming communal conservatory where residents often gather together for a coffee and catch up.
- Stunning communal gardens, with plenty of benches and chairs to sit and enjoy the surroundings.
- No onward chain.

## Interested?

reigate@ralphjames.co.uk  
01737 333677

ralphjames.co.uk



### Second Floor

Ashfields, Alma Road, Reigate

Total Area: 71.3 m<sup>2</sup> ... 767 ft<sup>2</sup>

FOR ILLUSTRATIVE PURPOSES ONLY.

Whilst every attempt has been made to ensure the accuracy of the floor plan shown, all measurements, positioning, fixtures, features, fittings and any other data shown are an approximate interpretation for illustrative purposes only and are not to scale.

No responsibility is taken for any error, omission, miss-statement or use of data shown.

The above statement applies to both 'Still Moving London LTD' and the Company or individual displaying this floor plan.

Unauthorised reproduction prohibited.

© Still Moving London LTD (www.stillmoving.london)

 RALPH JAMES