



2 Stroudley Close

Willesborough Ashford, TN24 0TY

Price £265,000

A spacious semi - detached home set back from the road along a short walkway.

The property comprises an inviting hallway, kitchen, sitting room, cloakroom, two double bedrooms and bathroom/WC. The enclosed rear garden is laid for ease of maintenance whilst the property also benefits from gas central heating, double glazing and allocated parking.

The mainline is within easy reach as is the well know McArthur Glen shopping centre, several schools and transport links.

Viewing

Please contact our Ashford Office on 01233 646411 if you wish to arrange a viewing appointment for this property or require further information.

- MODERN SEMI DETACHED HOUSE
- TWO DOUBLE BEDROOMS
- GROUND FLOOR CLOAKROOM
- ALLOCATED PARKING
- SET AWAY FROM THE ROAD ALONG A WALKWAY
- EASY ACCESS TO MAINLINE STATION
- GAS CENTRAL HEATING & DOUBLE GLAZING
- EPC RATING B (82)



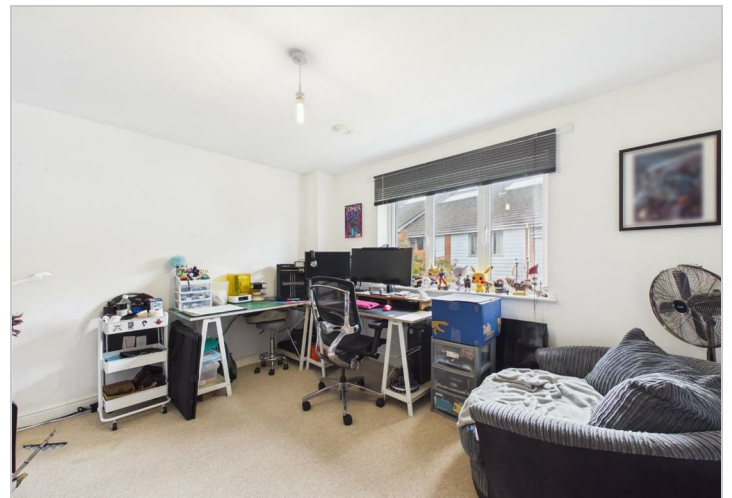
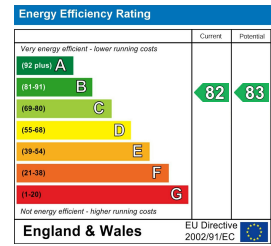
Floor Plan



Area Map



Energy Efficiency Graph



These particulars, whilst believed to be accurate are set out as a general outline only for guidance and do not constitute any part of an offer or contract. Intending purchasers should not rely on them as statements of representation of fact, but must satisfy themselves by inspection or otherwise as to their accuracy. No person in this firm's employment has the authority to make or give any representation or warranty in respect of the property.