



PROPERTY EXPERTS
SINCE 1989



VICTORIA PARK ROAD, E9

£2,300 PCM

A spacious one double bedroom Victorian conversion with its own private entrance. The property offers a large reception room, separate kitchen, one bathroom and direct access to a private garden.

- One Double Bedroom
- Private Entrance
- One Bathroom
- Separate Kitchen



ABOUT THE HOME

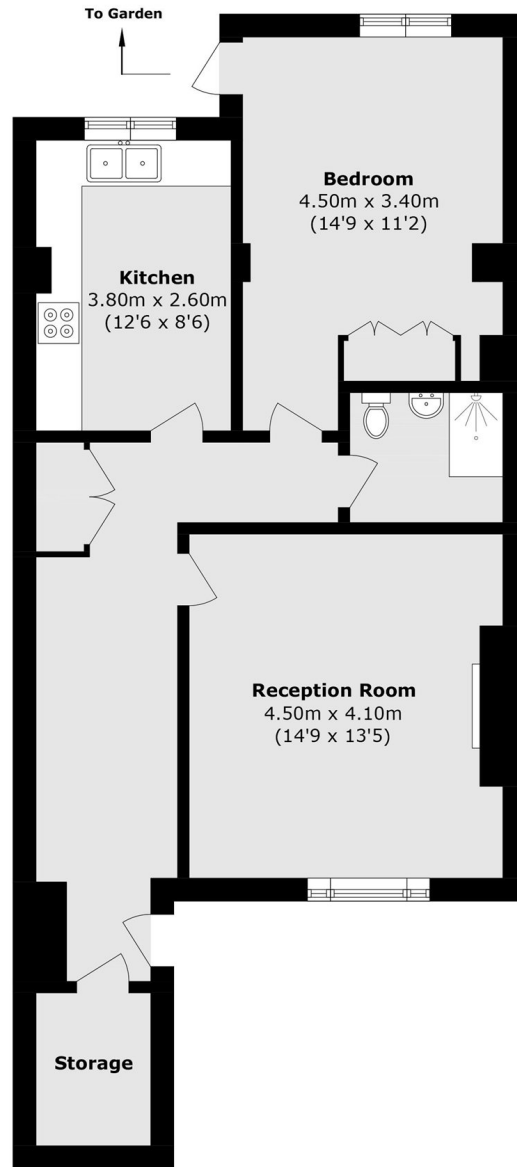
Fantastic location moments from the shops, cafés and restaurants of Victoria Park Village, with London Fields and Broadway Market also just a short walk away. Homerton and Hackney Central stations provide excellent transport links across London.







PROPERTY EXPERTS
SINCE 1989



Total area (approx.): 68.2 sq. m (734.1 sq. ft)

SOVEREIGN HOUSE

213 Victoria Park Road,
London, E9 7HD
020 8985 5800

Energy Rating: C We aim to make our particulars both accurate and reliable. However they are not guaranteed; nor do they form part of an offer or contract. If you require clarification on any points then please contact us, especially if you're traveling some distance to view. Please note that appliances and heating systems have not been tested and therefore no warranties can be given as to their good working order.