



Russell Road, CR4

£350,000

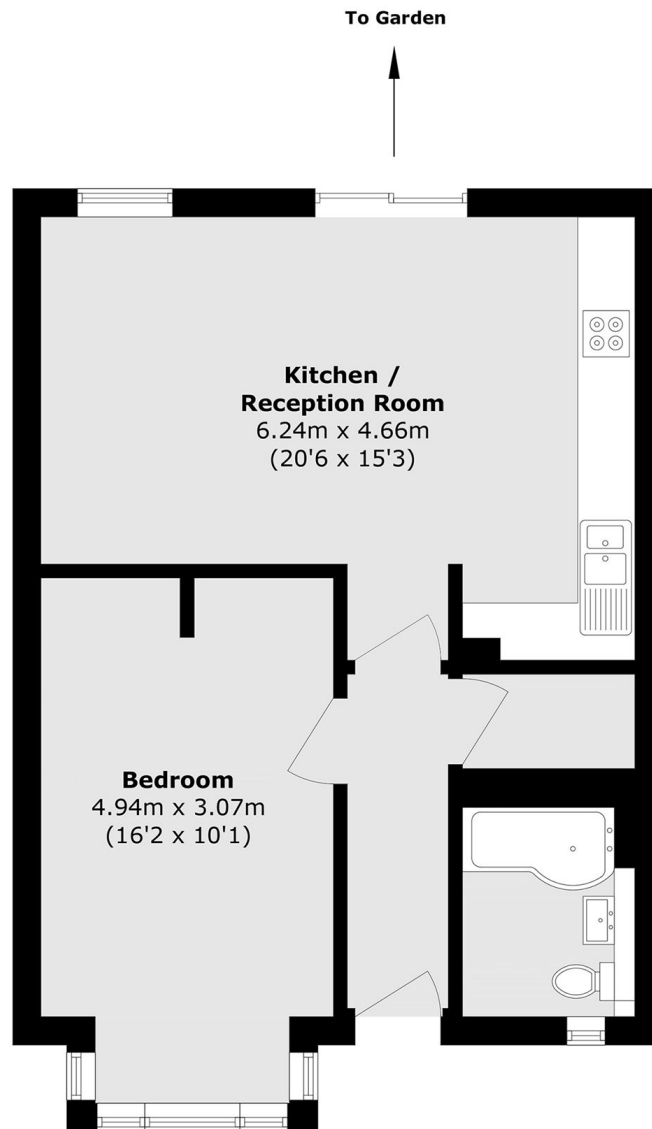
This ground floor maisonette has a large landscaped garden, one double bedroom, an open plan kitchen/reception room and useful storage cupboard. There is a highly energy efficient design throughout including underfloor heating, energy efficient boiler and aluminium double glazed windows. Allocated parking is also available by separate agreement.

Century House is a small boutique development of just nine apartments, all with a share of the freehold. Tucked away on Russell Road, with Wimbledon and Tooting nearby by car. The wide green open spaces of Mitcham Common is also just a short walk away with it's open grassy space, wooded areas and ponds, plus various trails for walking and running.

Features

- Ground Floor Maisonette
- Own Front Door
- Large Garden
- Underfloor Heating
- Energy Efficient Boiler
- Share Of The Freehold
- Quartz Worktops
- Modern Kitchens
- Bosch Oven & Hob
- Gas Boiler
- Allocated Parking By Agreement

Russell Road, Mitcham, CR4



Ground Floor

Total area (approx.): 54.3 sq. m (584.5 sq. ft)