



Hammersmith Road, W14

£650,000

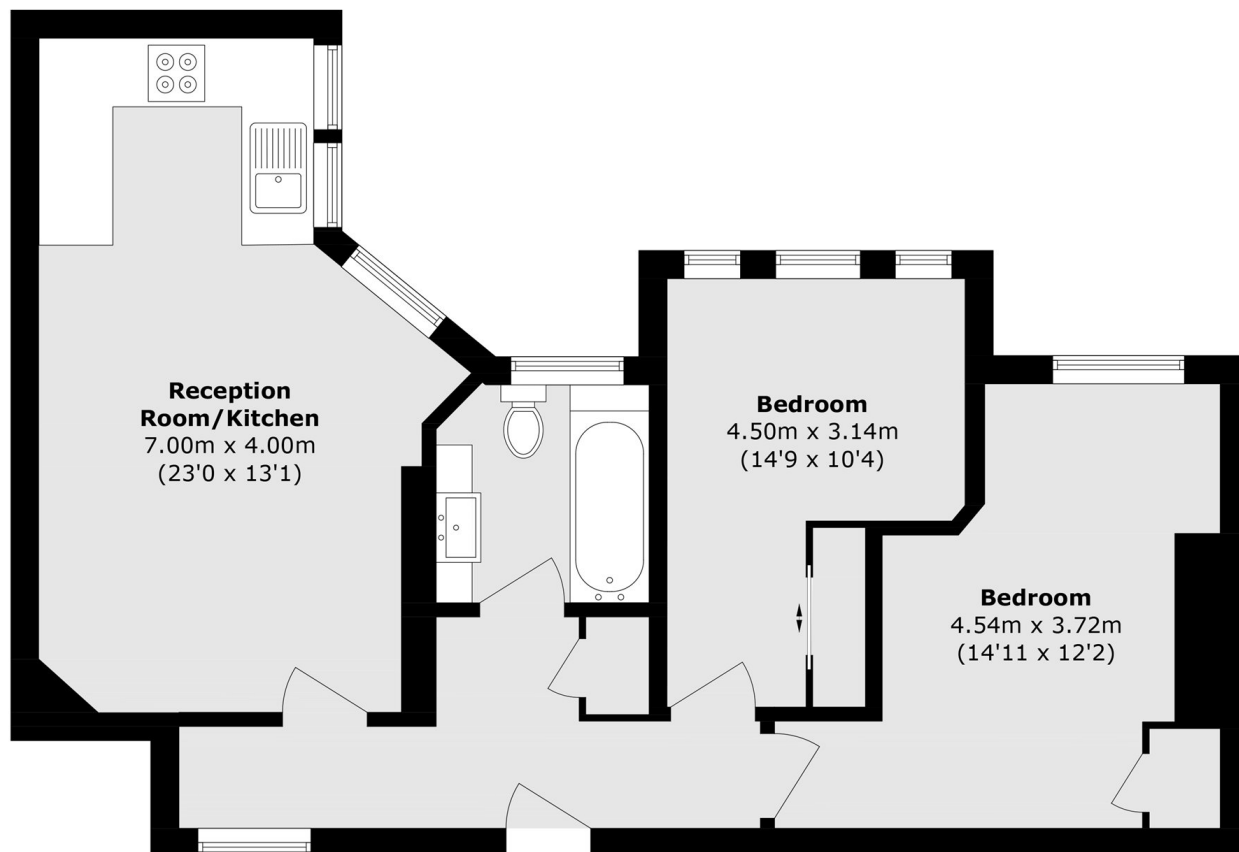
A spacious and bright two bedroom apartment situated in a popular mansion development, just moments away from Kensington High Street. Situated on the ground floor of a portered block and comprising, large open plan living room with kitchen, two double bedrooms and a modern bathroom.

Argyll Mansions is within walking distance of Westfield Shopping Centre and Kensington High Street. It is within half a mile of three stations: Kensington Olympia, West Kensington and Barons Court.

Features

- Share Of Freehold
- No Onward Chain
- Popular Location
- Close To Olympia Tube
- Two Bedrooms
- Period Building

Hammersmith Road, London, W14



Ground Floor

Total area (approx.): 69.7 sq. m (750.2 sq. ft)