

# THE PROPERTY PA

— LETTINGS AND PROPERTY MANAGEMENT —



22a Wesley Road, Southend-On-Sea, SS1 2HE

£900 Per Month

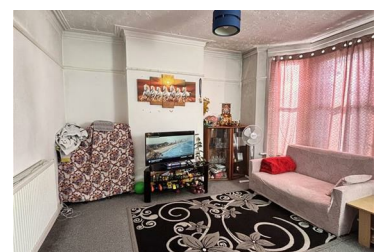


Large one-bedroom first floor flat offers an ideal retreat for those seeking comfort and convenience. The property is perfectly situated just a stone's throw away from the picturesque seafront, allowing residents to enjoy the refreshing coastal breeze and stunning views at their leisure.

It is an excellent choice for individuals or couples looking for a peaceful living space. With ample natural light streaming through the windows,

Living in Southend-On-Sea means you will have easy access to a variety of local amenities, including shops, cafes, and restaurants, all within a short distance. The vibrant seaside town is known for its lively atmosphere and numerous attractions, ensuring that there is always something to do.

Whether you are a first-time renter or seeking a new place to call home, this large one-bedroom room on Wesley Road presents a fantastic opportunity to enjoy coastal living at its finest. Don't miss the chance to make this lovely space your own and experience the best of Southend-On-Sea.



282 Leigh Road, Leigh-on-Sea, Essex, SS9 1BW

Tel: 01702 339025 Email: [sarah@thepropertypa.com](mailto:sarah@thepropertypa.com) <https://www.thepropertypa.com/>