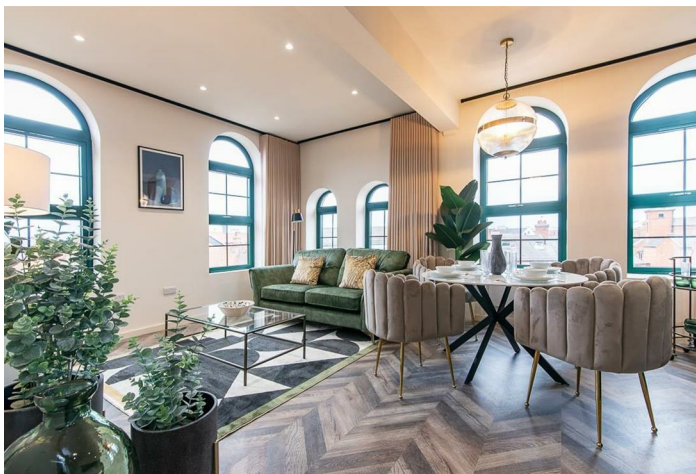




## Victoria Street

, Newark On Trent, NG24 4UT

- Textile Building Comprising 39 Apartments
- Modern Style Combined With Victorian Elegance
- Walking Distance Newark Northgate Train Station
- Communal Courtyard Gardens & Cycle Space
  - Close to Local Amenities
- Luxurious One Bedroom Apartment
  - Town Centre Location
  - Co Working Studio
- Beautifully Presented Throughout
  - Viewings are Highly Advised



Local Authority Newark and Sherwood  
Council Tax Band A  
EPC Rating D



**Burton Joyce Office**  
111 Church Road, Burton Joyce,  
Nottingham, NG14 5DJ

**Contact**  
0115 855 66 22  
[lettings@johnsonsandpartners.co.uk](mailto:lettings@johnsonsandpartners.co.uk)  
[www.johnsonsandpartners.co.uk](http://www.johnsonsandpartners.co.uk)

Agents Note: Whilst every care has been taken to prepare these particulars, they are for guidance purposes only. All measurements are approximate and for general guidance purposes only and whilst every care has been taken to ensure accuracy, they should not be relied upon and potential buyers/tenants are advised to recheck the measurements.