

Property ref: 17410

Windermere Road, Reading, RG2 7HP

£1,800 PCM

HASLAM'S
Lettings



A newly refurbished, three bedroom bay fronted semi-detached property in a popular residential road on the outskirts of the University area. This well presented home benefits from a large rear garden, driveway parking and a garage.

Reading Borough Council tax band C.

Broadband/Mobile Info: Connections available. For an indication of specific speeds and supply of Broadband and Mobile, we advise applicants go to the Ofcom website Broadband and Mobile Coverage Checker.

Available 10/07/2026

- Three bedroom semi-detached home
- Two reception rooms; Newly refurbished
- Driveway parking and garage
- Large rear garden; Unfurnished
- Gas central heating; EPC rating D
- Managed by HASLAM'S

*Fees For Assured Periodic Tenancies: when you rent a property from us you will be required to pay a sum equivalent to one weeks' rent for a holding deposit. Upon successful application, this amount will be off set against your first months' rent. You will also be required to pay a security deposit equivalent to 5 weeks' rent which will be held and protected in line with Deposit legislation. For more information about our fees please visit: www.haslams.net
Fees for all other tenancies (Non Housing Act Tenancies / Company Lets): when you rent a property from us we will charge you a one-off fee per property. This charge is the equivalent of 15 days of the monthly rental charge (+VAT) with a minimum fee of £450 (inc.VAT) up to a maximum of £650 (inc.VAT). Other fees may apply depending on your circumstances.

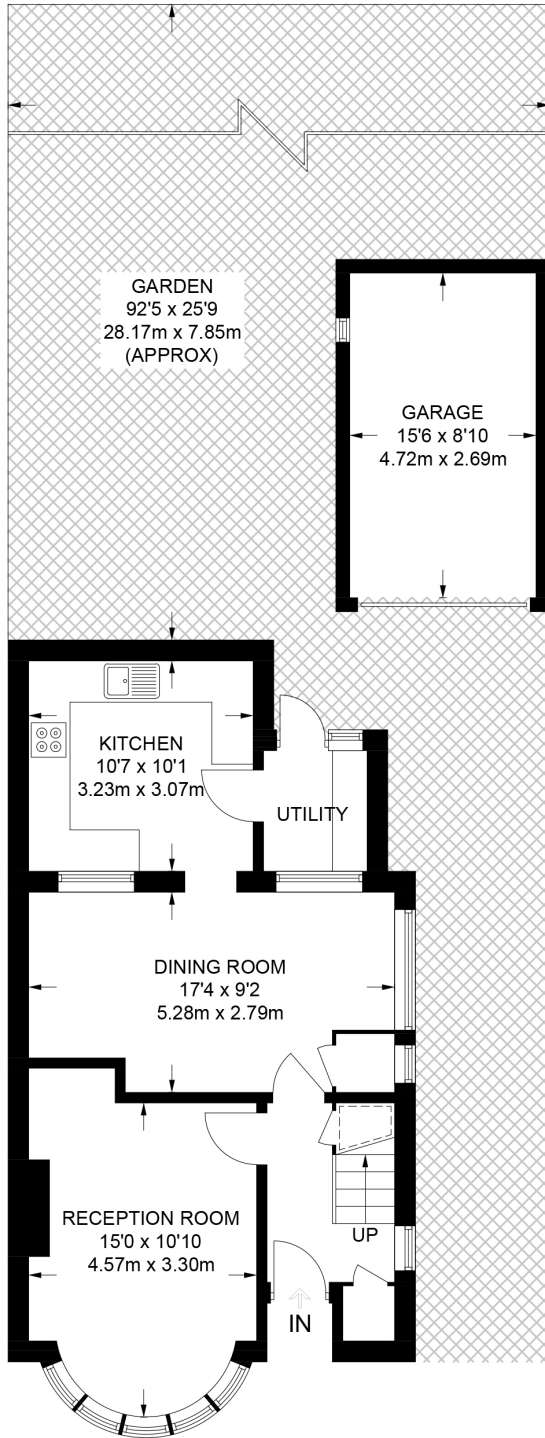
0118 960 1055

lettings@haslams.net www.haslams.net

Haslams Estate Agents Ltd, 159 Friar Street, Reading, Berkshire, RG1 1HE

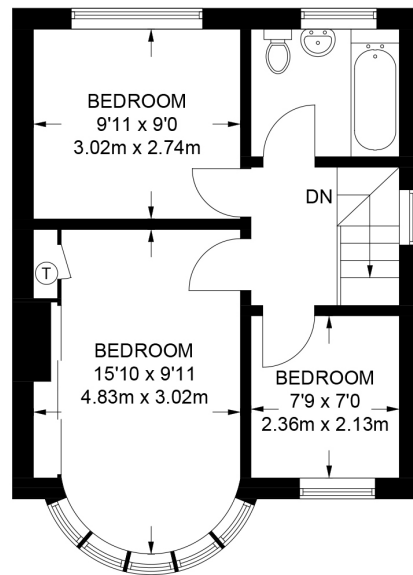






GROUND FLOOR
538 SQ FT / 50.0 SQ M

= REDUCED HEADROOM BELOW 1.5m / 5'0



FIRST FLOOR
394 SQ FT / 36.6 SQ M

APPROXIMATE GROSS INTERNAL AREA = 932 SQ FT / 86.6 SQ M
GARAGE = 137 SQ FT / 12.7 SQ M
TOTAL = 1069 SQ FT / 99.3 SQ M

This plan has been drawn for illustrative and identification purposes only.