

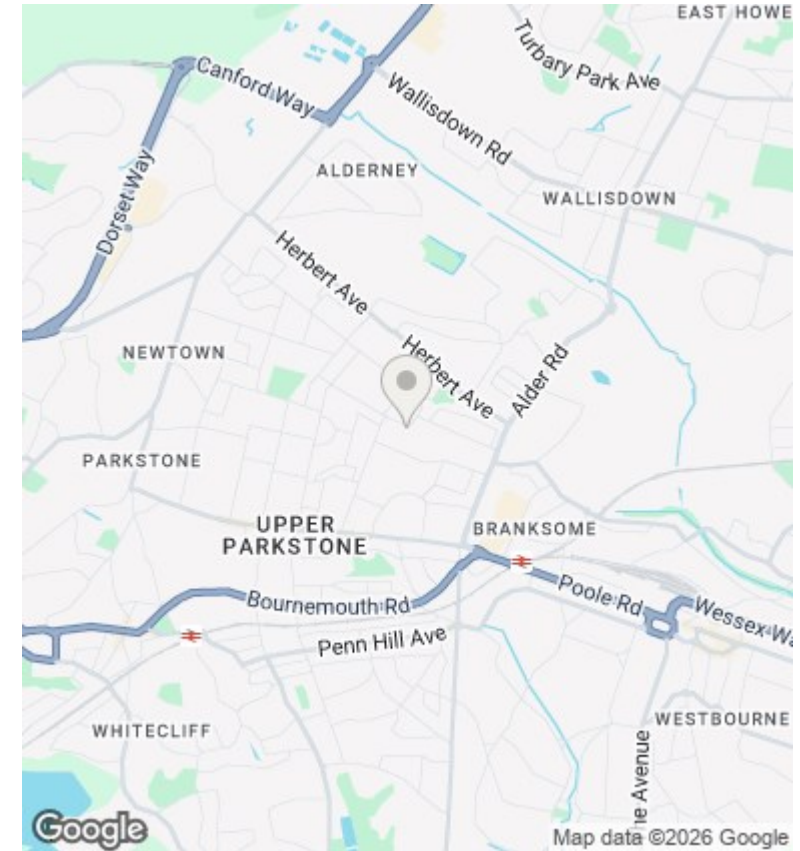
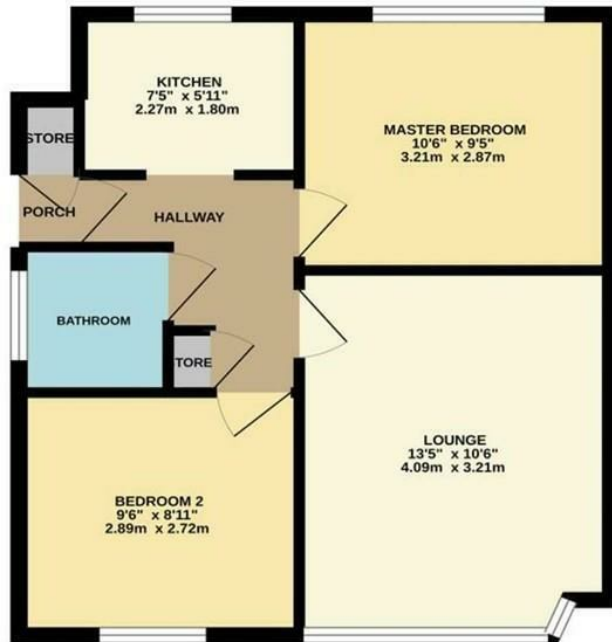


## 26a Wharfdale Road, Poole, BH12 2ED

£1,150 Per Calendar Month

- Ground Floor Flat
- Newly Refurbished
- Close To Amenities & Bus Routes
- Viewings Recommended!
- Two Double Bedrooms
- Off-Road Parking
- UPVC Double Glazing
- Available Now
- Offered Unfurnished
- Gas Central Heating

GROUND FLOOR  
448 sq.ft. (41.6 sq.m.) approx.



## Directions

## Viewings

Viewings by arrangement only. Call 01202 749390 to make an appointment.

## Council Tax Band

B

## EPC Rating:

C

Energy Efficiency Rating		
	Current	Potential
<i>Very energy efficient - lower running costs</i>		
(92 plus) <b>A</b>		
(81-91) <b>B</b>		
(69-80) <b>C</b>	70	74
(55-68) <b>D</b>		
(39-54) <b>E</b>		
(21-38) <b>F</b>		
(1-20) <b>G</b>		
<i>Not energy efficient - higher running costs</i>		
<b>England &amp; Wales</b>	EU Directive 2002/91/EC	