



Wessex Court

Putney Hill, SW15

Asking Price £500,000

A spacious two-bedroom apartment set within a well-maintained building in the heart of Putney, featuring a private balcony, lift access, a garage and a chain-free sale.

CHESTERTONS



Wessex Court

Putney Hill, SW15

- Two generously sized double bedrooms
- Spacious reception room with direct access to a private balcony
- Property includes dedicated garage at rear of building
- Lift access within the building
- Offered to the market chain free
- Moments from Putney High Street and its shops, cafés, and restaurants
- Short walk to Putney Mainline Station
- Easy access to East Putney Underground Station (District Line)



Ideally located in the heart of Putney, this well-proportioned two bedroom apartment offers generous living space and an excellent layout, making it a comfortable and practical home. The property features a substantial reception room with direct access to a private balcony, providing a pleasant outdoor extension to the living space.

The accommodation includes a separate fitted kitchen with integrated appliances, two good-sized double bedrooms, and a well-kept bathroom with shower connection. The apartment benefits from plenty of natural light and a sense of openness throughout.

Wessex Court is a popular residential building offering lift access, secure entry phone system, and a beautifully maintained communal garden to the rear. The property further benefits from its own private garage, providing valuable off-street parking or additional storage, an increasingly rare feature in such a central location.

Positioned just moments from the shops, cafés, and restaurants of Putney High Street, the property is also within easy walking distance of Putney Mainline Station and East Putney Underground Station (District Line).

Tenure: Leasehold (Expiry: 28/09/2967) Plus Share of Freehold

Service Charge: £4,462.50 p.a.

Ground Rent: Nil

Local Authority: London Borough of Wandsworth

Council Tax Band: E

Score	Energy rating	Current	Potential
92+	A		
81-91	B		
69-80	C	77 C	91 B
55-68	D		
39-54	E		
21-38	F		
1-20	G		

Chestertons Putney Sales

153 Upper Richmond Road

London

SW15 2TX

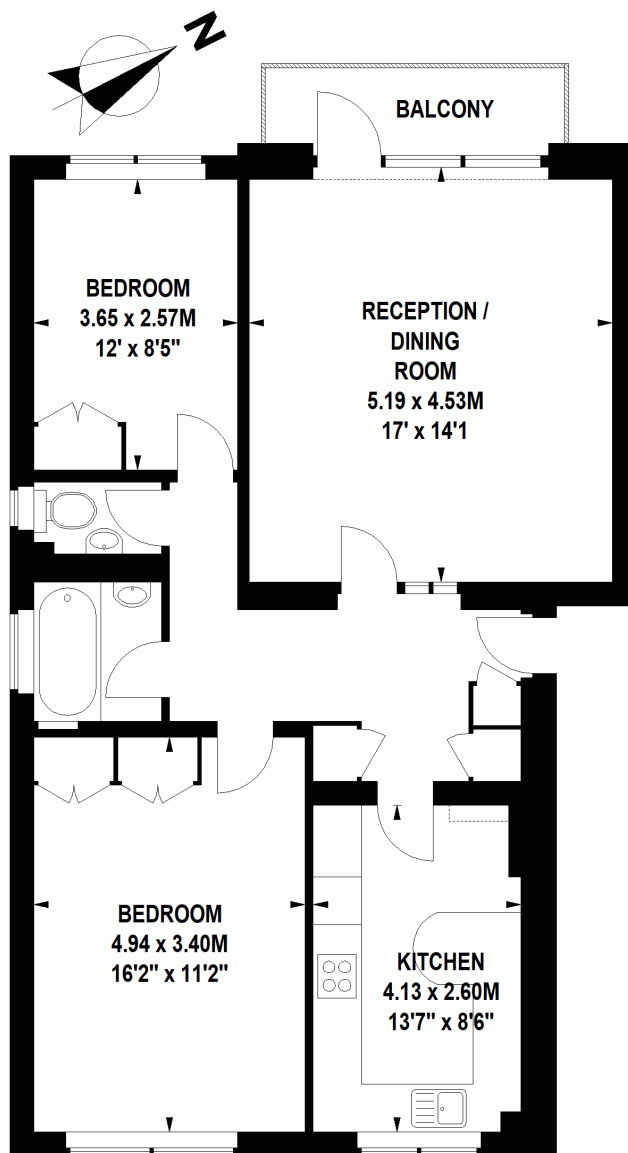
putney@chestertons.co.uk

020 8246 5959

chestertons.co.uk

Wessex Court, Putney Hill, SW15

Approximate Gross Internal Area 79 sq m / 850 sq ft



Second Floor

Floor Plan produced for Chestertons by Mays Property Marketing © . Tel 020 3397 4594

Illustration for identification purposes only. Not to scale.

Orientation, measurements, and other details are approximate and for guidance only,
purchasers should verify details independently.

Where a room has a sloping ceiling the dotted line marks 1.50M height,
and all measurements shown are at floor level.

