



Connells

Littlefield Close
HORLEY



Property Description

A fantastic opportunity to acquire a high-specification family home in a convenient and well-connected location. Viewing is highly recommended.

Upon entering, the welcoming entrance hall provides access to a convenient downstairs WC and leads through to the true heart of the home - a stunning L-shaped open plan lounge/kitchen/diner. Designed with both style and practicality in mind, this impressive living space features a high specification fitted kitchen with luxurious Quartz worktops, a central island ideal for entertaining, and generous living and dining areas. Bifold doors flood the space with natural light and seamlessly open onto the rear garden, creating excellent indoor-outdoor flow.

The first floor offers two well-proportioned double bedrooms, one benefitting from a stylish en suite shower room, alongside a modern family bathroom serving the remaining accommodation.

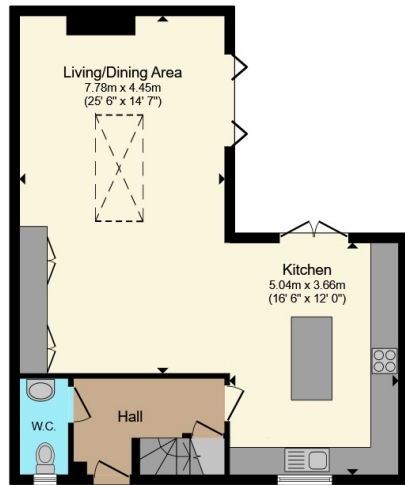
Occupying the entire second floor is a superb principal suite, creating a private retreat complete with a spacious double bedroom, built-in wardrobes, a luxurious en suite bathroom and the added comfort of an air conditioning unit.

Externally, the low maintenance rear garden has been thoughtfully designed for entertaining, featuring a dedicated BBQ and dining area beneath an attractive oak-framed pergola - ideal for hosting family and friends. To the front, a driveway provides off-road parking and benefits from an EV charging point.

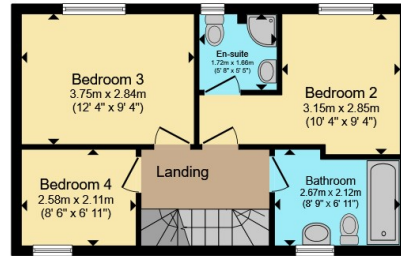




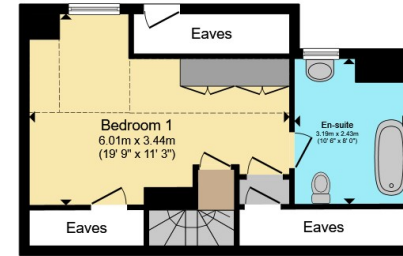




Ground Floor



First Floor



Second Floor

Total floor area 135.7 m² (1,461 sq.ft.) approx

This floor plan is for illustrative purposes only. It is not drawn to scale. Any measurements, floor areas (including any total floor area), openings and orientation are approximate. No details are guaranteed, they cannot be relied upon for any purpose and they do not form part of any agreement. No liability is taken for any error, omission or misstatement. A party must rely upon its own inspection(s). Powered by www.propertybox.io



To view this property please contact Connells on

T 01293 785 346
E horley@connells.co.uk

30 High Street
 HORLEY RH6 7BB

EPC Rating: B Council Tax
 Band: D

Tenure: Freehold

view this property online connells.co.uk/Property/HLY405065



1. MONEY LAUNDERING REGULATIONS Intending purchasers will be asked to produce identification documentation at a later stage and we would ask for your co-operation in order that there will be no delay in agreeing the sale. 2. These particulars do not constitute part or all of an offer or contract. 3. The measurements indicated are supplied for guidance only and as such must be considered incorrect. Potential buyers are advised to recheck measurements before committing to any expense. 4. We have not tested any apparatus, equipment, fixtures, fittings or services and it is in the buyers interest to check the working condition of any appliances.

Connells Residential is registered in England and Wales under company number 1489613, Registered Office is Cumbria House, 16-20 Hockliffe Street, Leighton Buzzard, Bedfordshire, LU7 1GN. VAT Registration Number is 500 2481 05.

See all our properties at www.connells.co.uk | www.rightmove.co.uk | www.zoopla.co.uk

Property Ref: HLY405065 - 0003