



**18 Whitedale Road, Calverton – NG14 6RQ**

Guide Price **£325,000**



## 18 Whitedale Road

Calverton, Nottingham

Well-presented and modern link-detached family home in sought-after Calverton. Stylish dining kitchen, spacious lounge and 3 beds with bathroom plus en-suite and private rear garden, drive and garage!

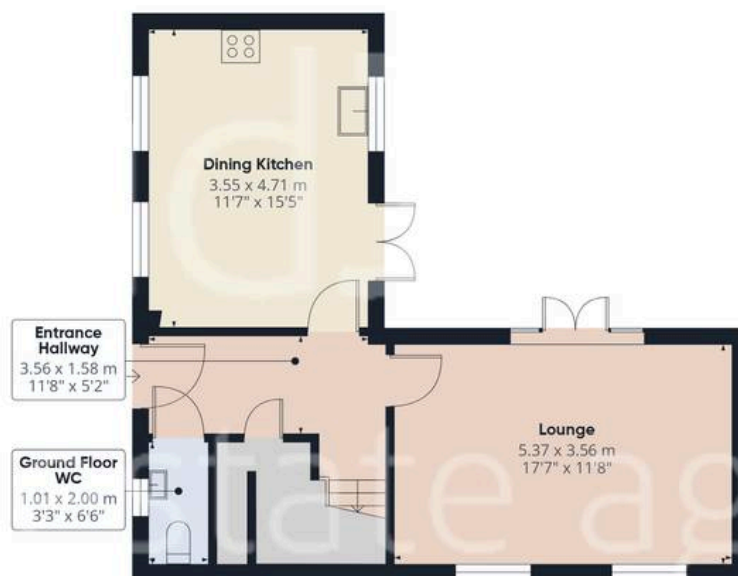
Council Tax band: D

Tenure: Freehold

- Modern link-detached family home on a desirable corner plot
- Popular Calverton village location close to schools, shops, bus links and amenities
- Welcoming entrance hallway with a convenient ground floor WC
- Stylish and modern dining kitchen with a range of integrated appliances
- Bright dual aspect lounge with feature French doors overlooking the garden
- Generous landing with three well-proportioned bedrooms
- Delightful main double bedroom with modern en-suite shower room
- Contemporary family bathroom with vanity sink and mains shower over bath
- Private enclosed rear garden with patio, lawn, and established planting
- Low maintenance front garden with garage and block paved driveway







Floor 0

Approximate total area<sup>(1)</sup>

96.7 m<sup>2</sup>

1042 ft<sup>2</sup>



Floor 1



(1) Excluding balconies and terraces

Calculations reference the RICS IPMS 3C standard. Measurements are approximate and not to scale. This floor plan is intended for illustration only.

GIRAFFE360



## David James Estate Agents

98-100 Front Street, Arnold - NG5 7EJ

0115 955 5550 • [arnold@david-james.com](mailto:arnold@david-james.com) • [www.david-james.com](http://www.david-james.com)

These particulars are produced in good faith and are set out as a general guide only. Measurements are approximate and floor plans are for illustrative purposes only. Services have not been tested. We have established professional relationships with third-party suppliers for the provision of services to Clients, details of which can be found on the property listing page on our website.