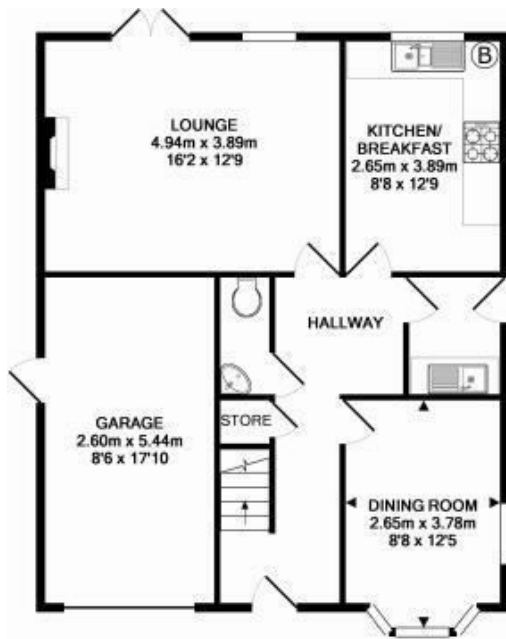


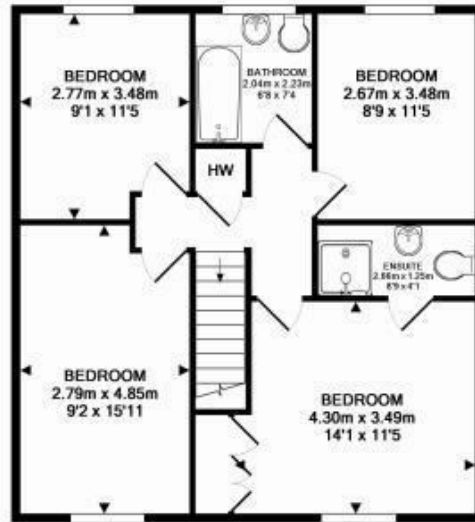
20 Munnmoore Close, Kegworth, Derby, DE74 2DG

£2,450 PCM

- STUDENT PROPERTY
- Kitchen
- Garage
- Large Lounge
- 5 Double Bedrooms
- Downstairs WC
- Driveway
- One bedroom with an ensuite
- Utility Room
- Fully furnished



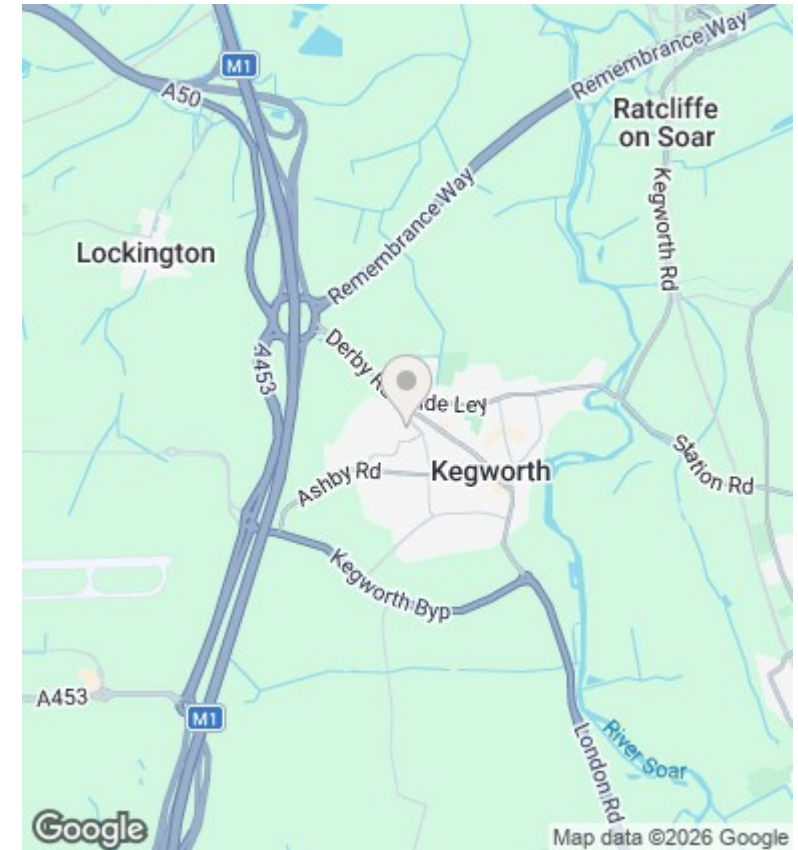
GROUND FLOOR
APPROX. FLOOR
AREA 71.5 SQ.M.
(769 SQ.FT.)



1ST FLOOR
APPROX. FLOOR
AREA 63.1 SQ.M.
(680 SQ.FT.)

TOTAL APPROX. FLOOR AREA 134.6 SQ.M. (1449 SQ.FT.)

Whilst every attempt has been made to ensure the accuracy of the floor plan contained here, measurements of doors, windows, rooms and any other items are approximate and no responsibility is taken for any error, omission, or mis-statement. This plan is for illustrative purposes only and should be used as such by any prospective purchaser. The services, systems and appliances shown have not been tested and no guarantee as to their operability or efficiency can be given.
Made with Metropix ©2015



Directions

Viewings

Viewings by arrangement only. Call 01509 674140 to make an appointment.

Council Tax Band

E

EPC Rating:

C

Energy Efficiency Rating		Current	Potential
Very energy efficient - lower running costs			
(92 plus) A			
(81-91) B			84
(69-80) C		74	
(55-68) D			
(39-54) E			
(21-38) F			
(1-20) G			
Not energy efficient - higher running costs			
England & Wales		EU Directive 2002/91/EC	