



## Hamlet Gardens, W6

£225,000

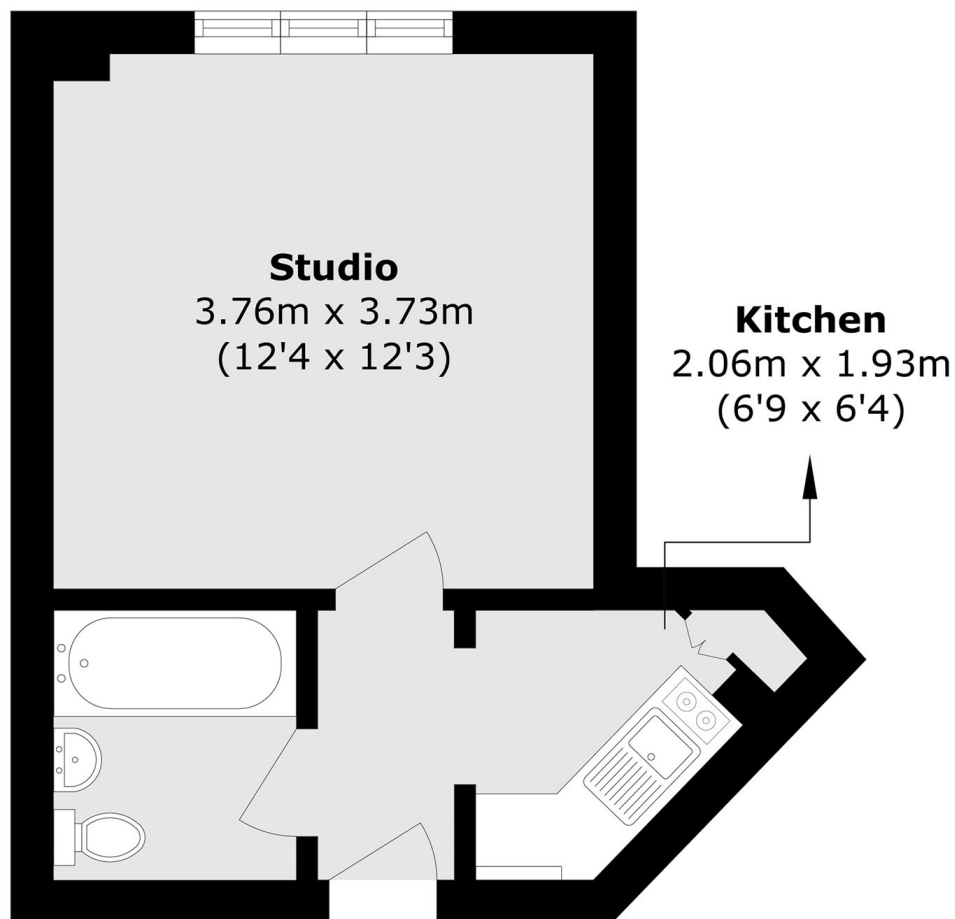
This lovely light studio flat is located in a portered block.

Kings Court is ideally placed for access to the host of amenities at Hammersmith Broadway and King Street, and only moments from the green open spaces of Ravenscourt Park.

### Features

- Studio Apartment
- Bright Flat
- Porter
- Lift
- Ravenscourt Park
- No Chain

# Hamlet Gardens, London, W6



## Fifth Floor

Total area (approx.): 23.2 sq. m (249.7 sq. ft)