



Rectory Close
Sutton Bonington

2 Bed Terraced House • LE12 5PJ • £995 pcm • £1,140 Deposit



Rectory Close, Sutton Bonington

A modern home set in a beautiful location. This two bedroom, terraced property comes with a lounge, kitchen, downstairs toilet, two double bedrooms, and a bathroom. To the rear of the house is a low maintenance garden, that leads to the allocated parking and garage. Now available to let.

Lounge

Overlooking Rectory Close, a good sized, neutral living room.

Kitchen

A clean and well presented L-shaped kitchen. This kitchen includes a cooker and hob, as well as space for other appliances.

Master Bedroom

The larger of the two double bedrooms on the first floor, this bedroom comes with built-in storage.

Bedroom Two

The second double bedroom, with neutral decor, overlooking the rear garden.

Bathroom

A modern three piece bathroom, including a bath, sink, toilet, and shower above the bath.

Water Closet

Situated on the ground floor, a water closet including a sink, and toilet.

Garden

A split level, low maintenance garden,

Parking

Allocated, off-road, parking for one car available, with further parking available within the single garage.

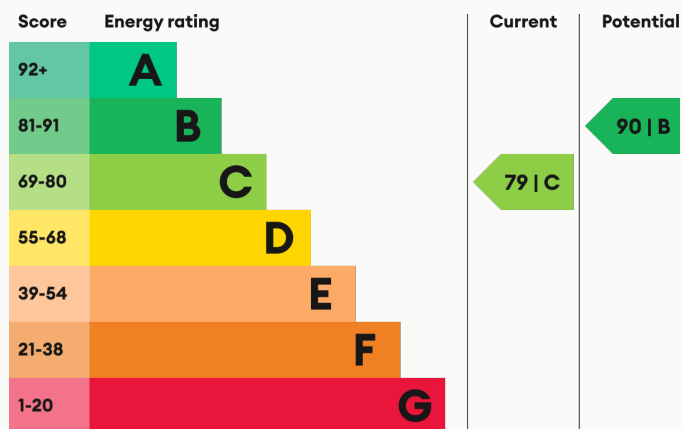
Heating

Gas-fired central heating.

Glazing

Modern, good quality, uPVC double glazing.

Energy Performance



We aim to make our particulars both accurate and reliable. However they are not guaranteed; nor do they form part of an offer or contract. If you require clarification on any points then please contact us, especially if you are traveling some distance to view. All measurements are to widest point.



Kitchen



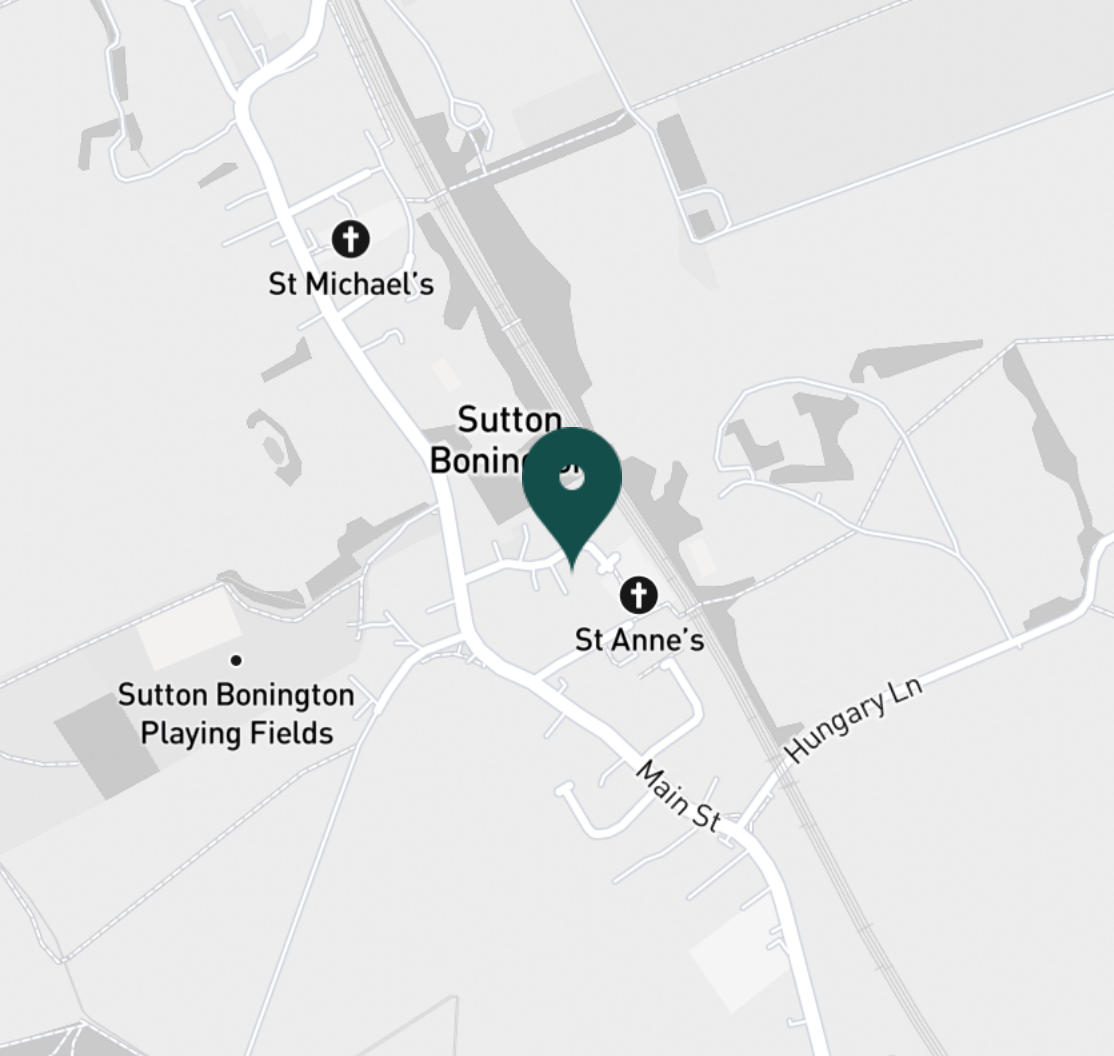
Kitchen



Kitchen



Kitchen



SUPERMARKETS

Co-op Food Kegworth	2.7 mi
Co-op Food East Leake	4.3 mi
Co-op Food Hall Croft	4.8 mi
Asda Shepshed	4.9 mi
Co-op Food Knightthorpe Rd	5.0 mi

GYMS

Viking Fitness Centre	2.6 mi
LivingWell Health Club East Midlands	3.3 mi
Stable Fitness	4.8 mi
CrossFit Loughborough	5.0 mi
Punchin Pandas Children's Martial Arts	5.2 mi

TRAIN STATIONS

East Midlands Parkway	4.0 mi
Loughborough	5.1 mi
Long Eaton	8.0 mi
Barrow upon Soar	8.8 mi
Sileby	11.0 mi

NURSERY SCHOOLS

Moors Farm Day Nursery	2.9 mi
Handkerchief Day Nursery	3.0 mi
The Honey Bee Day Nursery	4.4 mi
Robert Bakewell Playgroup	4.6 mi
East Leake Day Nursery & PS	4.8 mi

PRIMARY SCHOOLS

Sutton Bonington PS	0.4 mi
Kegworth Primary School	2.7 mi
Long Whatton CE PS	3.3 mi
Robert Bakewell PS	4.6 mi
St Winefrides Catholic PS	4.7 mi

HIGH SCHOOLS

Hind Leys Community College	4.9 mi
Shepshed High Sch	5.0 mi
Limehurst Academy	5.3 mi
The Garendon High Sch	5.7 mi
De Lisle Catholic Science C	5.7 mi

Discover
Sutton Bonington



- ✓ Available Now
- ✓ Beautiful Village
- ✓ Great Condition
- ✓ Water Closet
- ✓ Garage
- ✓ Unfurnished





Lounge



Lounge



Lounge



Master Bedroom



Master Bedroom



Master Bedroom



Bedroom Two



Bedroom Two



Bedroom Two



Bedroom Two



Bathroom



Bathroom



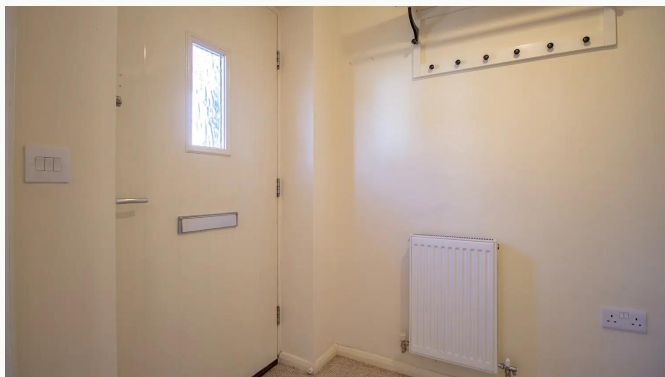
Bathroom



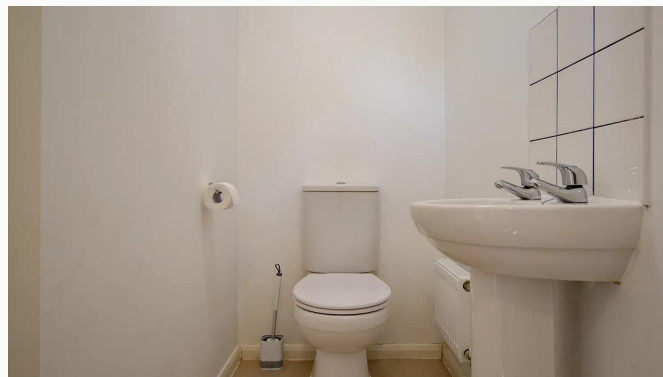
Bathroom



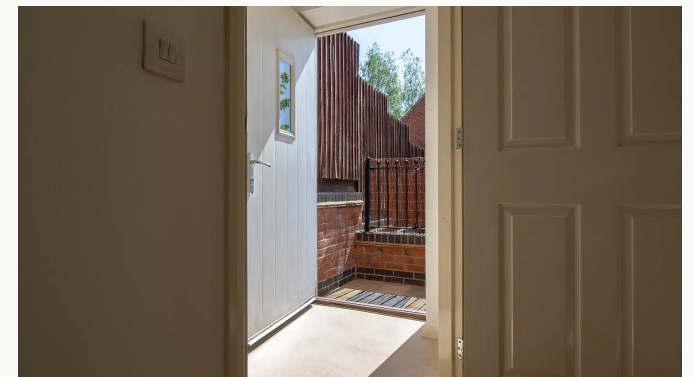
Landing



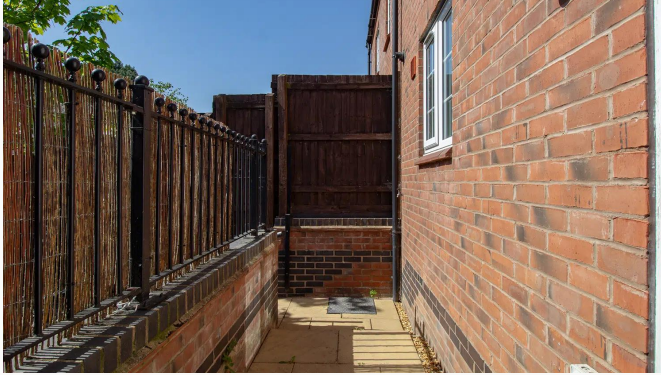
Hall



Water Closet



Rear Door



Garden



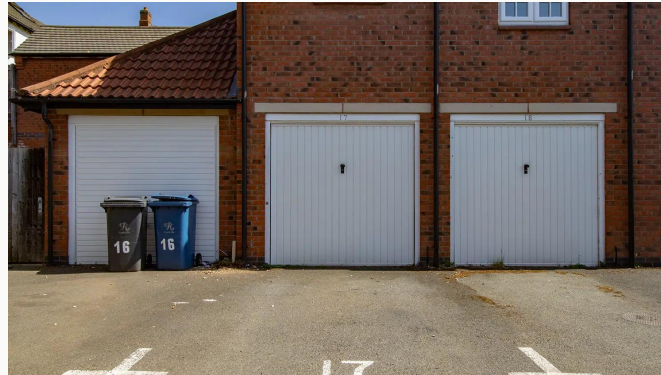
Garden



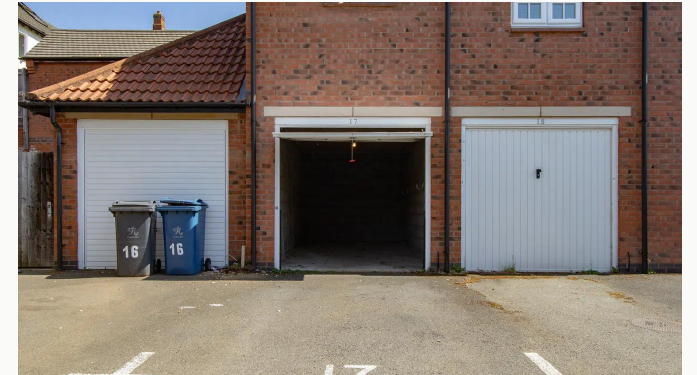
Garden



Garden



Garage



Garage



Entrance



Rectory Close



Sutton Bonington



Sutton Bonington

Available
From 04/05/2026

Comes
Unfurnished

Bedrooms
2

Receptions
1

Bathrooms
1

Parking
Garage

Postcode
LE12 5PJ

Rent
£995 pcm

Deposit
£1,140

EPC
79 | C

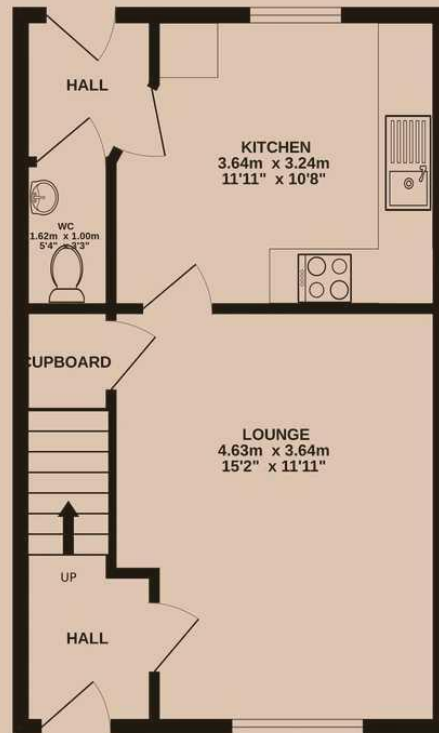
Council Tax Band
C

ID
#19156

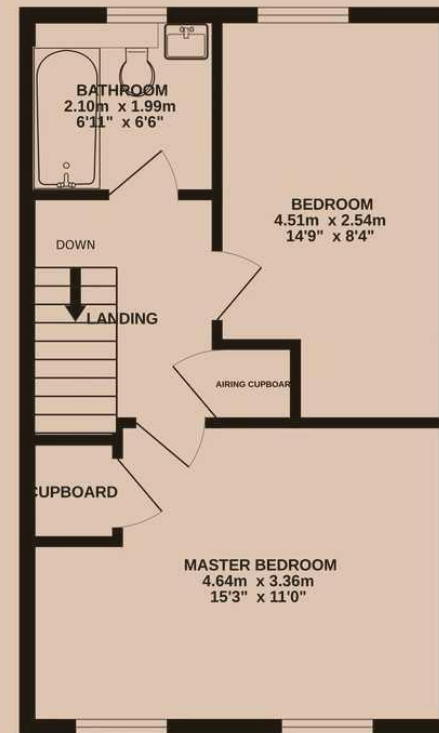
Updated
04/05/2026



GROUND FLOOR
36.5 sq.m. (393 sq.ft.) approx.



1ST FLOOR
36.5 sq.m. (393 sq.ft.) approx.



Have a property like this? Let's work together.

Design and marketing are at the heart of our approach. With most people now looking for property online, we can get our clients' properties in front of as many people as the most prominent national agents. Where we differ is in the quality of our work. We create stunning digital particulars that highlight the individual attributes of every property we market, with videos and floor plans as standard.



OUR OFFICE
7 Biggin Street
Loughborough, LE11 1UA

CONTACT US
01509 320 320
let@huntleys.net

