



## Hither Green Lane, SE13

£385,000

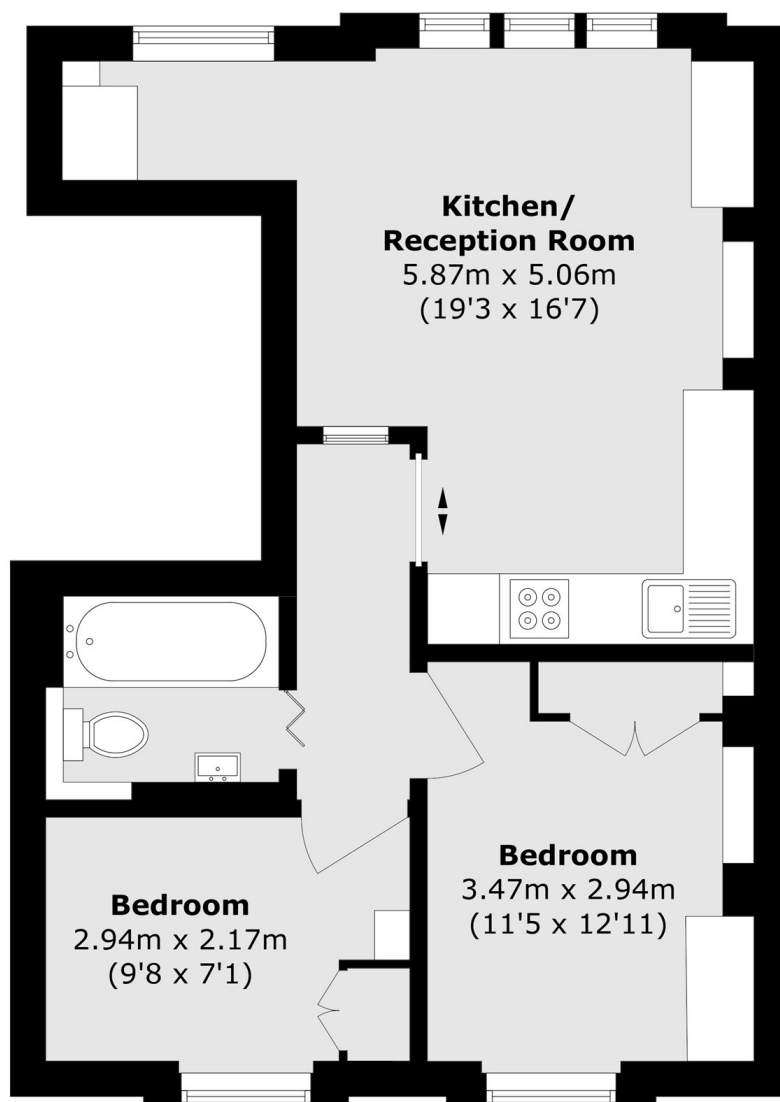
An exceptionally well presented two bedroom, period conversion flat. Beautifully presented to blend both style and comfort, with a bright a spacious reception area, along with a modern bathroom.

The open green spaces of Mountsfield Park, Lewisham Park and Ladywell Fields are popular nearby destinations, with Hither Green Station being within walking distance and providing regular trains into the city.

### Features

- Period Conversion
- Two Bedrooms
- Open Plan Living
- Close To Stations
- Green Spaces Nearby
- No Onward Chain

# Hither Green Lane, London, SE13



Total area (approx.): 43.8 sq. m (471.4 sq. ft)