



8 Miller Road

Burton Latimer, Northamptonshire NN15 5SP



**Simpson & Partners**

Situated in the highly sought-after town of Burton Latimer, this superb two/three bedroom semi-detached bungalow offers flexible and well-presented accommodation, complete with a conservatory, off-road parking, and a garage. The property benefits from UPVC double glazing, gas radiator heating, and a brand new roof fitted in 2023, ensuring both comfort and peace of mind for years to come.

Upon entering, you are welcomed into a spacious entrance hall that leads through to the impressive 20ft kitchen/dining/living room, which features a range of built-in appliances and French doors opening out onto the rear garden — making it the perfect hub for both everyday living and entertaining. Adjoining this is a generous 15ft conservatory, providing a wonderful additional living space that can be enjoyed all year round.

The accommodation further comprises a charming bay-fronted sitting room which could equally serve as a third bedroom, offering versatility to suit a variety of lifestyles. There are two further well-proportioned bedrooms and a three-piece bathroom suite completing the internal layout.

Externally, the property boasts off-road parking to the front, along with a garage, while to the rear there is a good-sized garden — ideal for those who enjoy outdoor living, gardening, or simply relaxing in a private setting.

An excellent opportunity to acquire a versatile and tastefully appointed bungalow in a popular and convenient location.

Offers In Excess Of £260,000



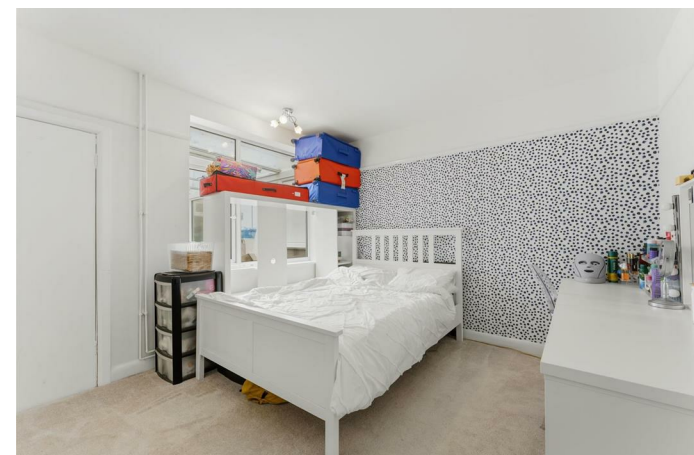
3

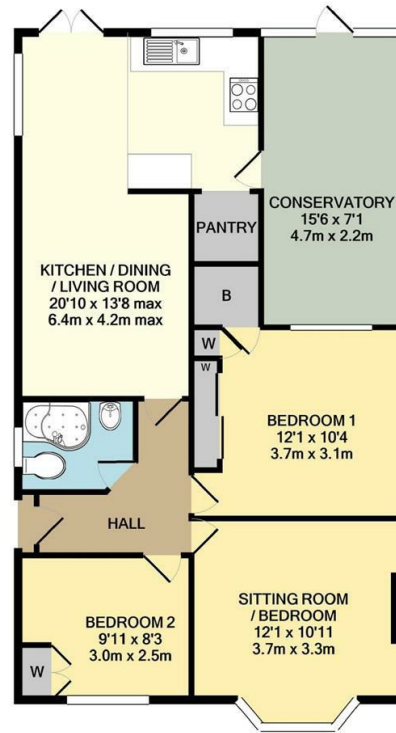


1



1



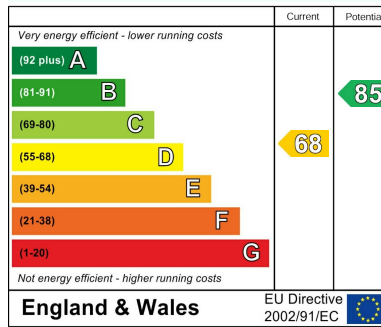


Whilst every attempt has been made to ensure the accuracy of the floor plan contained here, measurements of doors, windows, rooms and any other items are approximate and no responsibility is taken for any error, omission or mis-statement. The plan is copyright of Simpson and Partners and is for illustrative purposes and should only be used as such by any prospective purchaser. The services, systems and appliances shown have not been tested and no guarantee as to their operability can be given.

Made with Neotop ©2020



### Energy Efficiency Rating



When you buy with Simpson and Partners, you know **you'll be in safe hands**. From the moment you walk through our doors, we'll make you **feel truly welcome**. Our sales consultants and financial advisors will take you through **every step of the process**, offering **free expert advice** along the way, from help choosing the right mortgage and insurance through to finding your conveyancer. And if you need help selling your home too, **with over 20 years of local experience, you can trust us to get you moving**.



**Simpson  
& Partners**

Making Every  
Journey Personal



01536 518200

[kettering@simpsonandpartners.co.uk](mailto:kettering@simpsonandpartners.co.uk)

<https://www.simpsonandpartners.co.uk/>

1 Silver Street, Kettering, Northants, NN16 0BN