

Longlands

Repton, Derby, DE65 6GB

John German





Longlands

Repton, Derby, DE65 6GB

£365,000

A thoughtfully designed stylish four-bedroom, two-bathroom dormer residence offered with no upward chain, featuring a stylish dining kitchen with vaulted ceiling, lounge, underfloor heating to the ground floor, air-conditioned bedrooms and a pretty private low-maintenance garden.

John German 

Repton is a popular and well-regarded village offering a charming high street, historic church, and a range of local amenities including a butcher, post office, convenience store, village hall with cafe, dentist, hairdressers, beauticians, and the renowned Repton School. Nearby Willington provides further amenities and a railway station, while excellent road links via the A38 and A50 offer access to Derby, Nottingham, Birmingham, and East Midlands Airport.

The property is entered via a welcoming central hallway featuring attractive wood-effect flooring, which continues throughout the ground floor. From here, stairs rise to the first floor with an oak balustrade and glass panels plus useful under-stairs storage. The lounge enjoys a pleasant front aspect and provides a comfortable space for relaxation, benefitting from underfloor heating.

At the heart of the home is a superb dining kitchen with feature vaulted ceiling fitted with a stylish range of contemporary units with under cupboard lighting complemented by granite worktops. Integrated appliances include a dishwasher, microwave, oven, and washing machine, with space provided for an American-style fridge freezer. A five-ring gas hob and stainless steel sink are neatly incorporated into the work surfaces. The kitchen is flooded with natural light from French doors opening onto the garden, along with Velux and high-level windows, and offers ample space for a dining table and chairs. Underfloor heating continues throughout this area, making it ideal for both everyday living and entertaining.

Also on the ground floor is a versatile single bedroom or home office with bespoke built-in cabinetry, along with a separate dressing room/ additional bedroom featuring mirrored fitted wardrobes providing generous hanging and shelving space. The two bedrooms lie adjacent to each other and do offer potential to open into one larger bedroom (subject to regulations).

A contemporary ground floor bathroom completes the accommodation at this level, fitted with a panelled bath and shower attachment, vanity unit with inset basin, concealed WC, attractive natural stone tiled surrounds, heated chrome towel rail, recessed lighting, and a built-in cupboard housing the boiler and underfloor heating manifolds.

To the first floor, a striking glass balustrade staircase leads to a landing with additional storage and a Velux window. The principal bedroom features recessed lighting, two Velux windows, air conditioning/heating system, useful eaves storage, and access to a stylish en-suite shower room that is fully tiled and includes a shower enclosure with rainfall and handheld shower heads, wall-mounted vanity unit with inset basin, WC, heated chrome towel rail, and an obscure circular window. The second first-floor bedroom also benefits from air conditioning/heating, recessed lighting, a Velux window, and a distinctive circular side window.

Outside - The property is set back behind a block-paved driveway providing off-road parking. Gated side access leads to a private and low-maintenance courtyard garden, designed for ease of upkeep and featuring patio areas, artificial lawn, pretty planted raised beds, established trees, and useful attractive timber shed. A paved pathway continues around the side and rear of the property.

Tenure: Freehold (purchasers are advised to satisfy themselves as to the tenure via their legal representative).
Please note: There is restricted head height within the first floor bedrooms. It is quite common for some properties to have a Ring doorbell and internal recording devices. It is common for property Titles to contain Covenants, a copy of the Land Registry title is available to view on request.

Property construction: Traditional	Parking: Drive	Electricity supply: Mains
Water supply: Mains	Sewerage: Mains	Heating: Mains gas

(Purchasers are advised to satisfy themselves as to their suitability).

Broadband type: Fibre See Ofcom link for speed: <https://checker.ofcom.org.uk/>

Mobile signal/coverage: See Ofcom link <https://checker.ofcom.org.uk/>

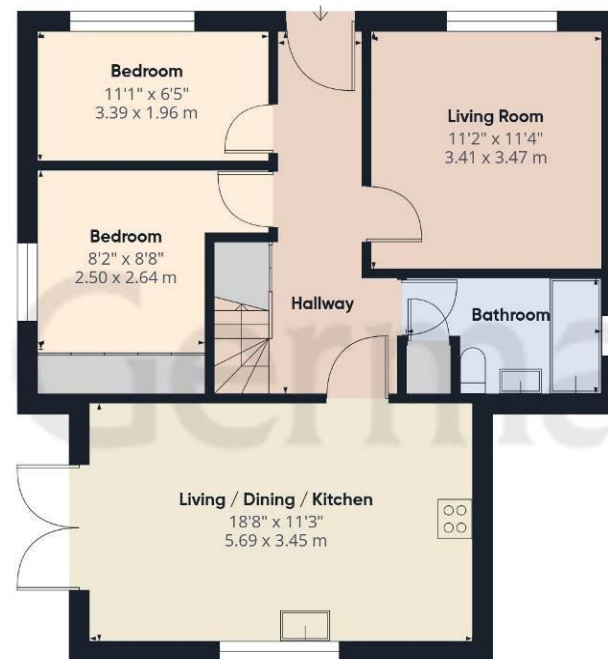
Local Authority/Tax Band: South Derbyshire District Council / Tax Band D

Useful Websites: www.gov.uk/government/organisations/environment-agency

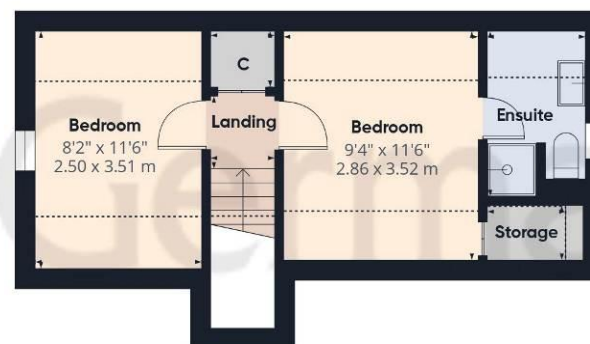
Our Ref: JGA/12022026







Ground Floor



Floor 1

Approximate total area⁽¹⁾

933 ft²

86.6 m²

Reduced headroom

110 ft²

10.2 m²

(1) Excluding balconies and terraces

Reduced headroom

..... Below 5 ft/1.5 m

Calculations reference the RICS IPMS 3C standard. Measurements are approximate and not to scale. This floor plan is intended for illustration only.

GIRAFFE360





The property information provided by John German Estate Agents Ltd is based on enquiries made of the vendor and from information available in the public domain. If there is any point on which you require further clarification, please contact the office and we will be pleased to check the information for you, particularly if contemplating travelling some distance to view the property. Please note if your enquiry is of a legal or structural nature, we advise you to seek advice from a qualified professional in their relevant field.

We are required by law to comply fully with The Money Laundering Regulations 2017 and as such need to complete AML ID verification and proof / source of funds checks on all buyers and, where relevant, cash donors once an offer is accepted on a property. We use the Checkboard app to complete the necessary checks, this is not a credit check and therefore will have no effect on your credit history. With effect from 1st March 2025 a non-refundable compliance fee of £30.00 inc. VAT per buyer / donor will be required to be paid in advance when an offer is agreed and prior to a sales memorandum being issued.

Agents' Notes

These particulars do not constitute an offer or a contract neither do they form part of an offer or contract. The vendor does not make or give and Messrs. John German nor any person employed has any authority to make or give any representation or warranty, written or oral, in relation to this property. Whilst we endeavour to make our sales details accurate and reliable, if there is any point which is of particular importance to you, please contact the office and we will be pleased to check the information for you, particularly if contemplating travelling some distance to view the property. None of the services or appliances to the property have been tested and any prospective purchasers should satisfy themselves as to their adequacy prior to committing themselves to purchase.

Referral Fees

Mortgage Services - We routinely refer all clients to APR Money Limited. It is your decision whether you choose to deal with APR Money Limited. In making that decision, you should know that we receive on average £60 per referral from APR Money Limited.

Conveyancing Services - If we refer clients to recommended conveyancers, it is your decision whether you choose to deal with this conveyancer. In making that decision, you should know that we receive on average £150 per referral.

Survey Services - If we refer clients to recommended surveyors, it is your decision whether you choose to deal with this surveyor. In making that decision, you should know that we receive up to £90 per referral.

John German

63a Market Street,
Ashby-De-La-Zouch,
Leicestershire, LE65 1AH

01530 412824

ashbysales@johngerman.co.uk

AWAITING EPC MEDIA

Ashbourne | Ashby de la Zouch | Barton under Needwood
Burton upon Trent | Derby | East Leake | Lichfield
Loughborough | Stafford | Uttoxeter

JohnGerman.co.uk Sales and Lettings Agent



