



DANIEL ARCHER

exp[®] UK

@ daniel.archer@exp.uk.com

🌐 danielarcher.exp.uk.com

☎ 07792 947 756

Haygarth Place, Wimbledon Village

£1,250,000

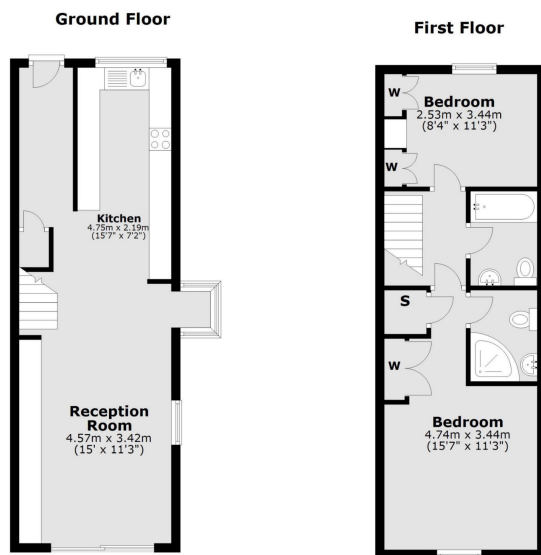
🛏️ 2 🚿 2 🚗 1



- Two Bedrooms
- Two Bathrooms
- Through Reception room with open dining space
- Well equipped kitchen
- Period Charm with Modern Interior
- Conveniently Located for Wimbledon Village High Street and Common
- Private Garden and parking space
- Private sought after development
- No onward chain
- EPC C Property Ref DA0587



A charming period two-bedroom, two-bathroom end of terrace house with a private garden and parking, superbly located in the heart of Wimbledon Village, a picturesque setting close to the stables, boutiques and restaurants of the village and the green open spaces of Wimbledon common and excellent connections nearby with mainline and district line services at Wimbledon to central London. Property Ref: DA0587



Total area: approx. 73.7 sq. metres (793.5 sq. feet)

