

1
BED

First Floor Spacious Apartment

Flat 6 Hoddern House 272, South Coast Road, Peacehaven, BN10 7PD

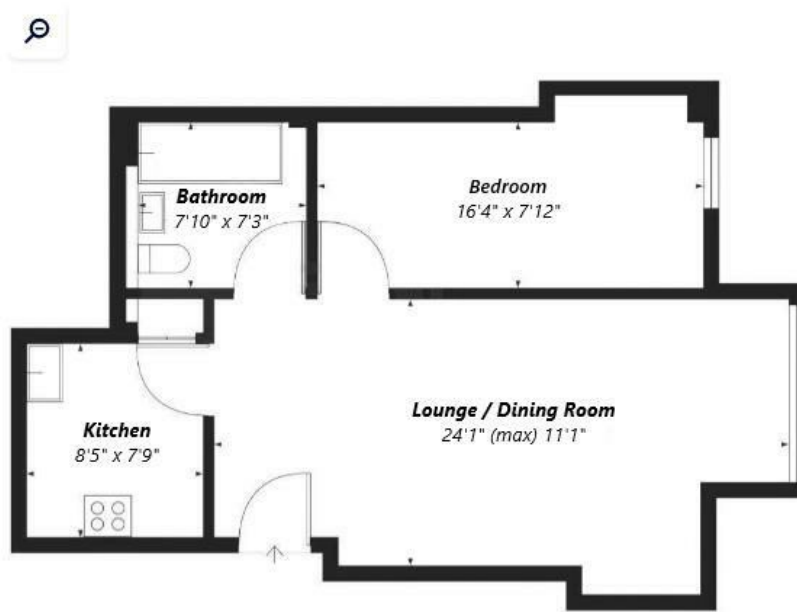


Price £170,000

Leasehold

phillipmann
we do more

www.phillipmann.com



inbrief...

We are delighted to offer for sale an excellent opportunity to acquire this spacious first (top) floor apartment, offered to the market with NO ONWARD CHAIN. Ideally situated in the heart of Peacehaven, the property is conveniently nearby to local bus routes, schools and a wide range of everyday amenities. This apartment represents an ideal purchase for first-time buyers looking to step onto the property ladder, as well as investors seeking to expand their portfolio.

The communal entrance has stairs to the apartment's private front door. This opens into the south facing, open plan lounge dining room which has ample room for all your associated furniture, fitted storage and enjoys an abundance of natural light throughout the day. Stunning distant views feature as a lovely outlook.

A door from the living area opens into the modern fitted kitchen which is fitted with a range of wall and base units and complementing working surface. Features include space for white goods, inset sink drainer and oven with electric hob with overhead extractor. The apartment benefits from a generous double bedroom with space for all your free standing furniture and a modern bathroom suite finishes the accommodation.

The apartment will also be sold with the significant advantage of a long lease making it highly desirable for buyers.

VIEWINGS ADVISED

Leasehold
Lease - 999 years from March 2018
Service Charge - £901.80 per annum



EPC - D

Council Tax Band - A

moreinfo...



Phillip Mann Peacehaven Office
226-230 South Coast Road, Peacehaven, BN10 8JR
01273 586622

To see more details on this & all our homes go to
www.phillipmann.com