



DEVONSHIRE TERRACE, W2

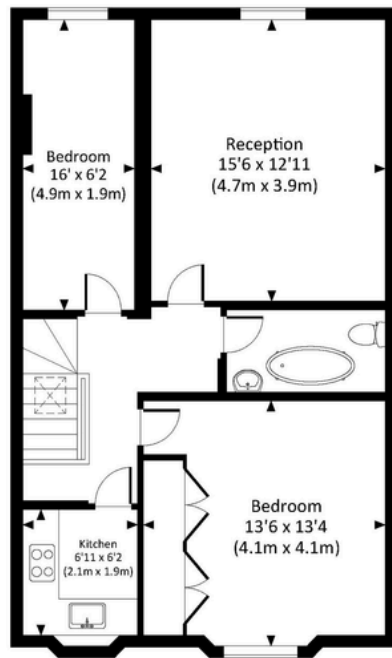


## Devonshire Terrace, W2

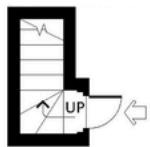
A well presented top floor, two bedroom flat in a handsome Victorian building overlooking Queens Gardens. The apartment enjoys great natural light and boasts a good size reception room, two bedrooms, a separate kitchen, bathroom and ample attic space for storage. Devonshire Terrace is centrally located with excellent transport links such as Lancaster Gate underground (Central Line) and Paddington mainline (Network Rail, Crossrail and Heathrow Express) and underground (District, Circle, Bakerloo and Hammersmith & City lines) station. Oxford Street and the West End are both easily accessible offering some of the best shopping, restaurants and theatre London has to offer.



Approx. Gross Internal Area  
= 65.0 sq m / 700 sq ft



Fourth Floor



Third Floor



## Devonshire Terrace, W2 - Leasehold

Local Authority - City of Westminster

- Access to Communal Gardens
- Close to Hyde Park
- Two Bedrooms
- Chain Free
- Top Floor Flat
- Council Tax Band: F
- Remaining Lease: 127 years



Whilst every attempt has been made to ensure the accuracy of the floor plan, measurements are approximate and not to scale. No guarantee is given on the total square footage of the property quoted on the plan. Figures given are for guidance. Plan is for illustration purposes only, not to be used for valuations.