



Knatchbull Road, NW10

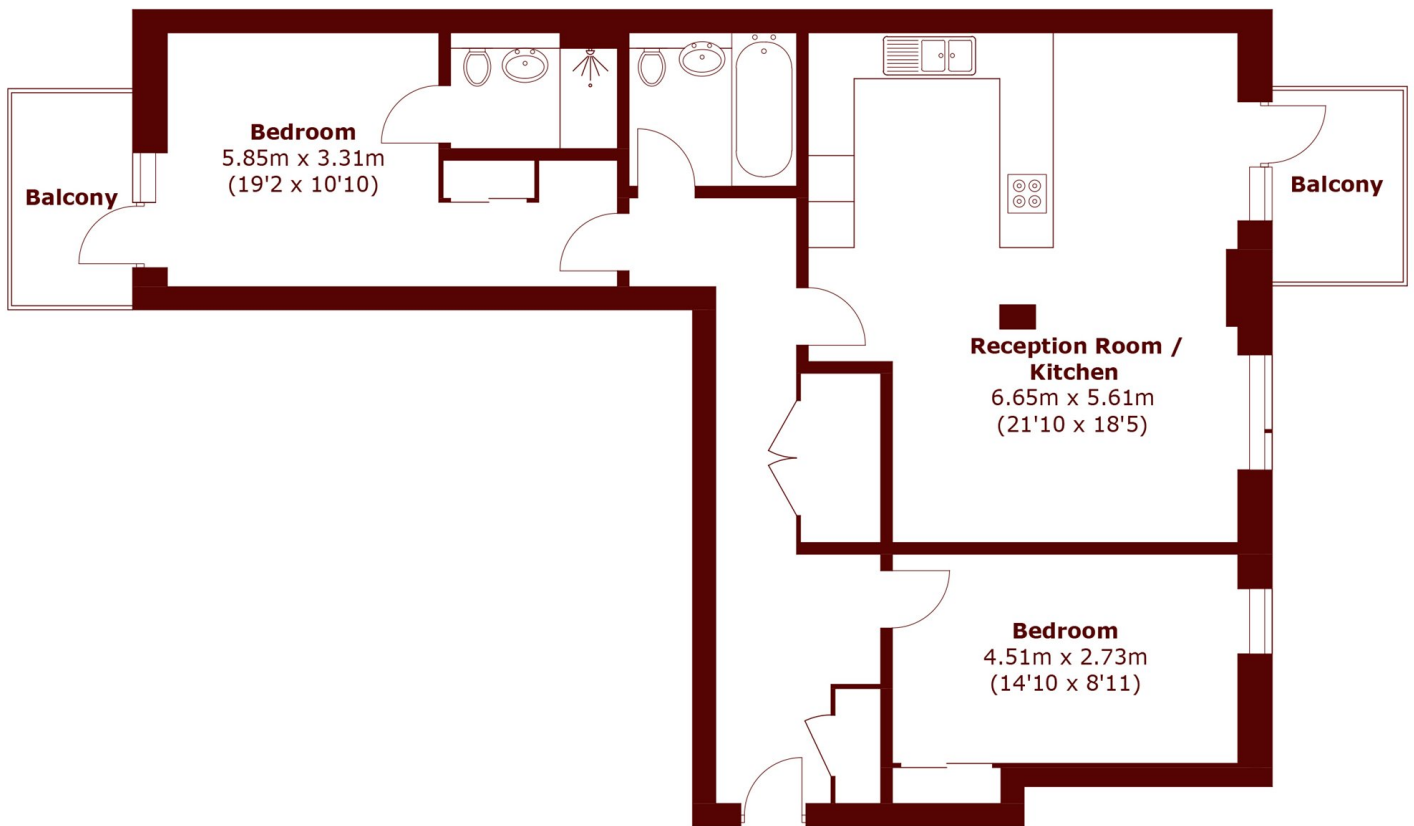
£2,400 pcm



- Two Double Bedroom
- Two Bathroom

- Terraces
- New Build

- Modern
- Close to Station



Total area (approx.): 91.8 sq. m (988.1 sq. ft)
Balcony: 8.7 sq. m (93.6 sq. ft)

Marsh & Parsons Queen's Park

56 Salusbury Road, London,
NW6 6NN
020 7624 4513