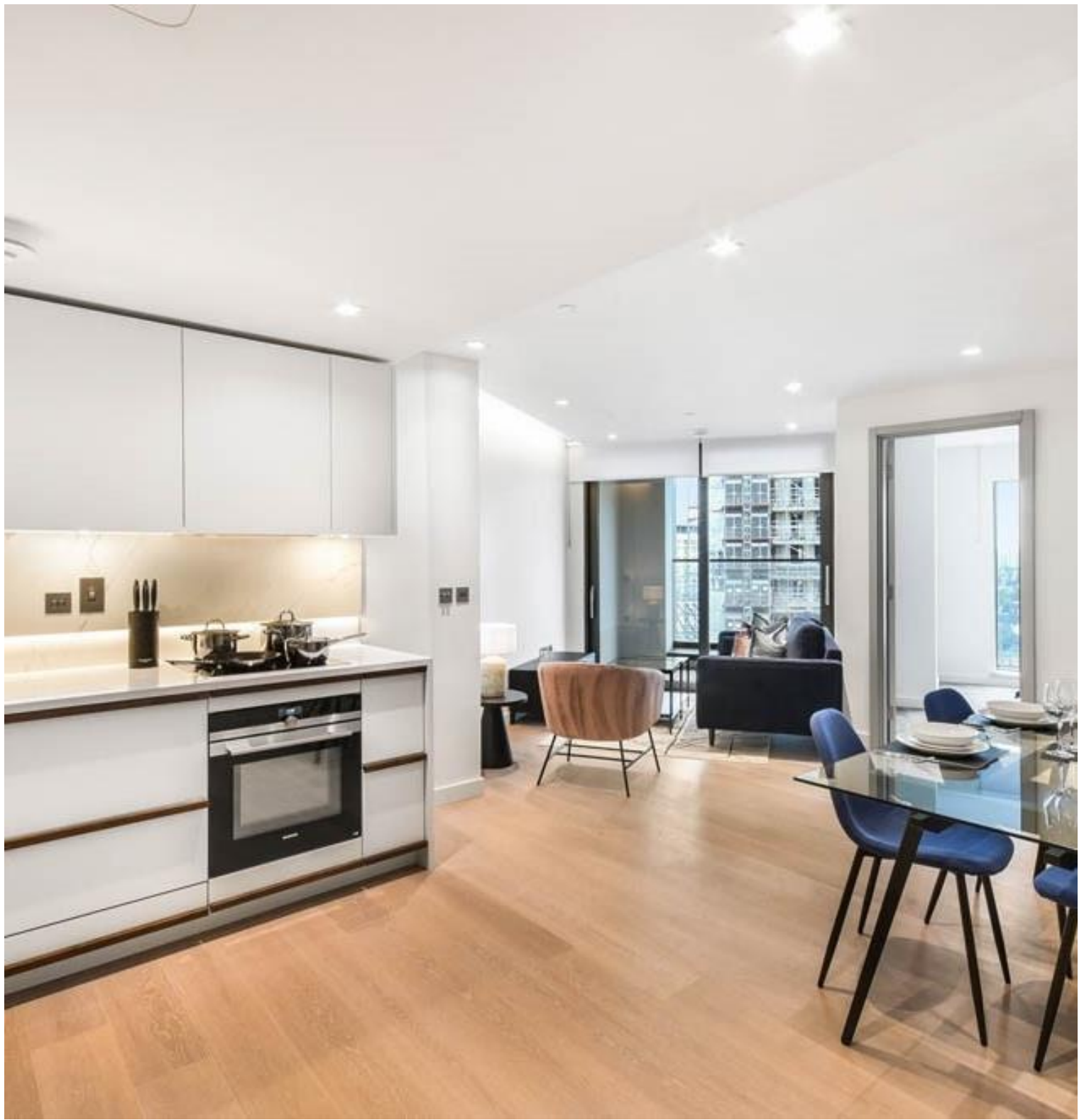


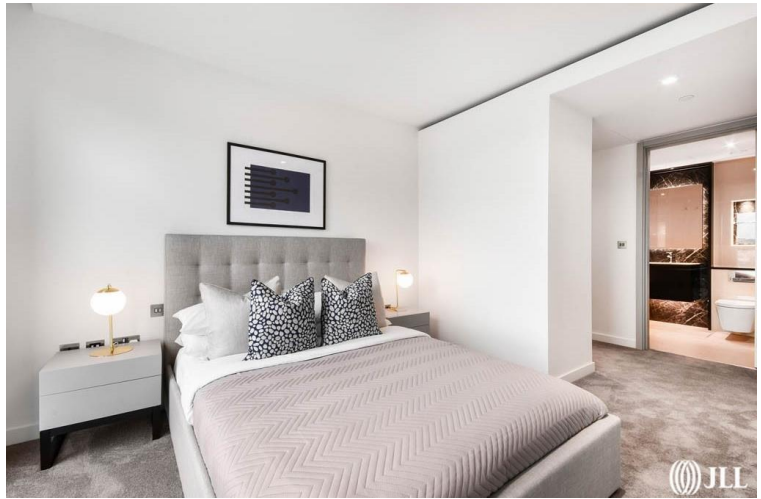


Newcastle Place, London W2

Price £5,000 per month - Furnished







Description

A luxury two-bedroom apartment to let in Westmark Tower, part of the new West End Gate development in Paddington. Arranged over the 16th floor the property comprises two double bedrooms (one en-suite), second family sized bathroom, open plan kitchen and living room leading to the private balcony. Other benefits include 24-hour concierge, lift, gym, swimming pool, cinema, gym, meeting room, residents lounge and private hire dining area. West End Gate by St Edward is built to the highest quality. Paddington mainline and underground stations are just a short walk away. This property is offered on a furnished basis and is available for immediate occupancy.

As well as paying the rent, you may also be required to make the following permitted payments. If your tenancy does not qualify as an AST, additional fees may apply. Please visit jll.co.uk/fees for details of fees which may be payable when renting a property

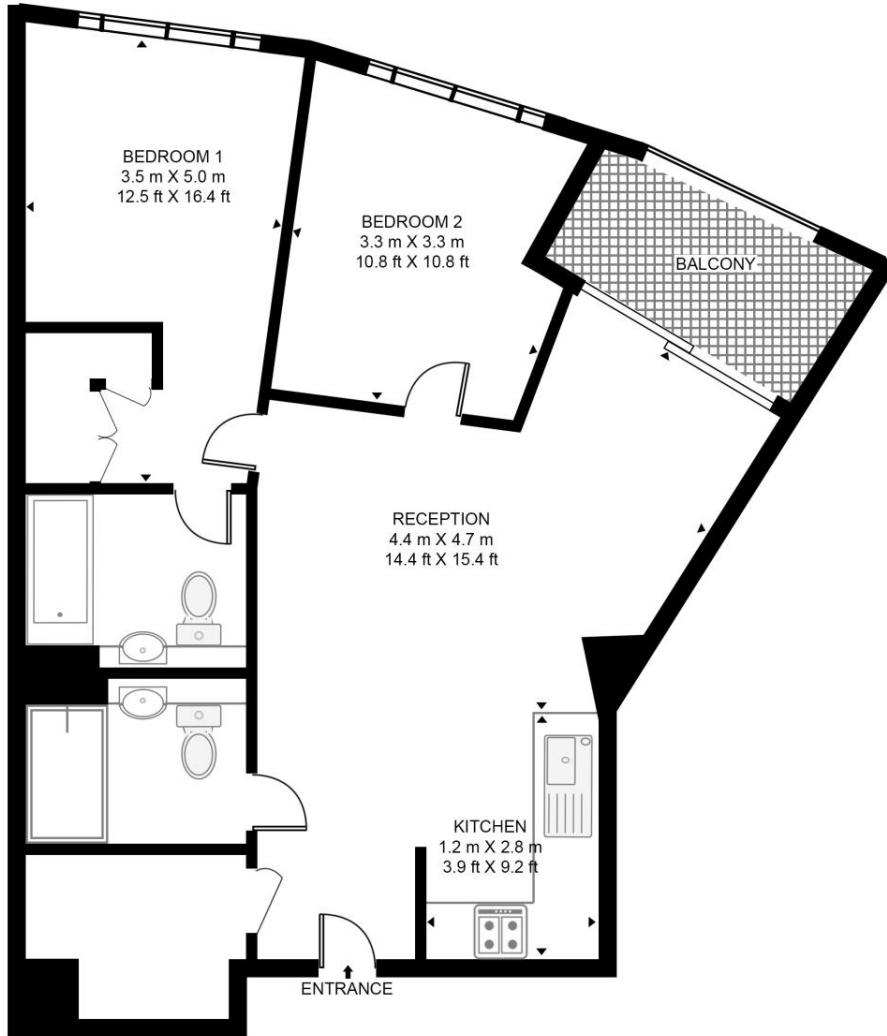
- 2 Bedrooms
- 2 Bathrooms
- Private balcony
- 24 Hour concierge
- Resident only leisure facilities
- Approx 800 sq ft (74 sq m)
- Furnished
- EPC: B

Floorplan

sq ft | sq m

WESTMARK TOWER

APPROXIMATE GROSS INTERNAL FLOOR AREA 800 SQ.FT (74.3 SQ.M)



SIXTEENTH FLOOR

HDVA

This floor plan has been defined by the RICS Code of Measurement. This floor plan and all others are for approximate representative purposes only and upon usage is agreed to as such by the client.

WWW: hdvirtualart.com | TEL: 0203.974.1567 | EMAIL: info@hdvirtualart.com

Kensington
387 Kensington High Street,
London W14 8QA
+4420 7087 5696
lettingskensington@eu.jll.com

Urban living, your way.

jll.co.uk/residential

© 2019 Jones Lang LaSalle IP, Inc. All rights reserved. All information contained herein is from sources deemed reliable; however, no representation or warranty is made to the accuracy thereof.

