



RAMSDEN ROAD, SW12

£625,000

- Two Double Bedrooms
- Victorian Conversion
- Nightingale Triangle
- No Onward Chain
- Share of Freehold
- Energy Rating:





## ABOUT THE HOME

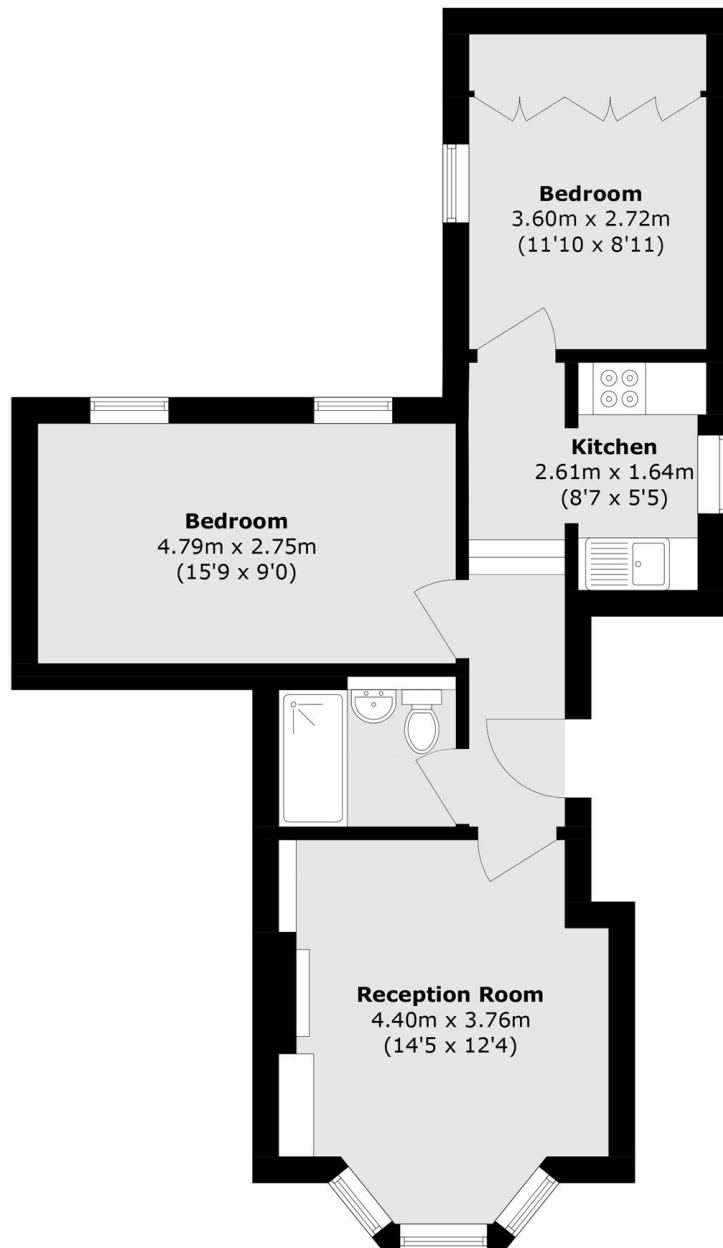
An immaculate two double bedroom first floor flat located on the highly regarded Ramsden Road moments from Balham High Street. The property is also offered with the share of the freehold and no onward chain.

Ramsden Road is a popular road in the heart of Balham's popular Nightingale Triangle. Balham mainline and Underground stations are within easy reach as are the vast array of shops, bars and restaurants local to the area. The green open spaces of Wandsworth Common are also close by.









Total area (approx.): 53.0 sq. m (570.4 sq. ft)

#### JACKSONS BALHAM

8-11 Balham Station Road,  
London, SW12 9SG  
Sales: 020 8675 6555  
Lettings: 020 8675 6565

Energy Rating: We aim to make our particulars both accurate and reliable. However they are not guaranteed; nor do they form part of an offer or contract. If you require clarification on any points then please contact us, especially if you're traveling some distance to view. Please note that appliances and heating systems have not been tested and therefore no warranties can be given as to their good working order.