



Sharrat Field, Sutton Coldfield - B75 6QT
£579,950

 **MOORHOUSE**



Sharrat Field

Sutton Coldfield

Upon entering, a welcoming hallway sets the tone for the entire residence, complete with a convenient cupboard for storage and leading to an impressive living room adorned with oak parquet flooring and a large window that fills the space with natural light. The immaculate sitting room/home office offers flexible accommodation and overlooks the rear garden, providing a serene setting for work or relaxation.

The heart of the home is the contemporary open plan kitchen/breakfast room, featuring sleek cabinetry, a full suite of integrated appliances, beautiful quartz worktops including a stylish breakfast bar making this a sociable space, perfect for both every-day living and entertaining.

An inner hallway leads to the luxurious principal bedroom with french doors leading out to the garden patio and complete with a sumptuous en-suite shower room, while two further immaculate bedrooms offer flexible accommodation for family or guests.





24 Sharrat Field

Sutton Coldfield, Sutton Coldfield

The luxury bathroom is finished to an exceptional standard, ensuring comfort and style throughout.

Oak doors add a touch of elegance to every room along with 'Karndean' flooring to the kitchen, sitting room, bathroom and hallways.

The property's frontage is equally attractive, with a smart block paved driveway leading to the garage, providing secure off-road parking for multiple vehicles.

The outside space is equally impressive, offering the perfect balance of privacy and tranquillity. The beautiful south east facing rear garden is a true highlight, with a newly laid patio ideal for al fresco dining or morning coffee, and an immaculate lawn. This delightful garden is designed for low maintenance yet high enjoyment, making it a peaceful retreat for relaxation or entertaining.







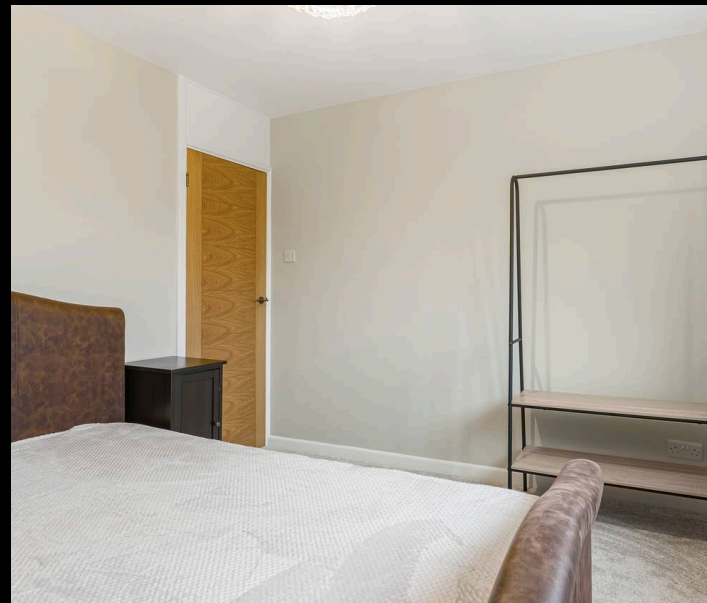
FEATURES:

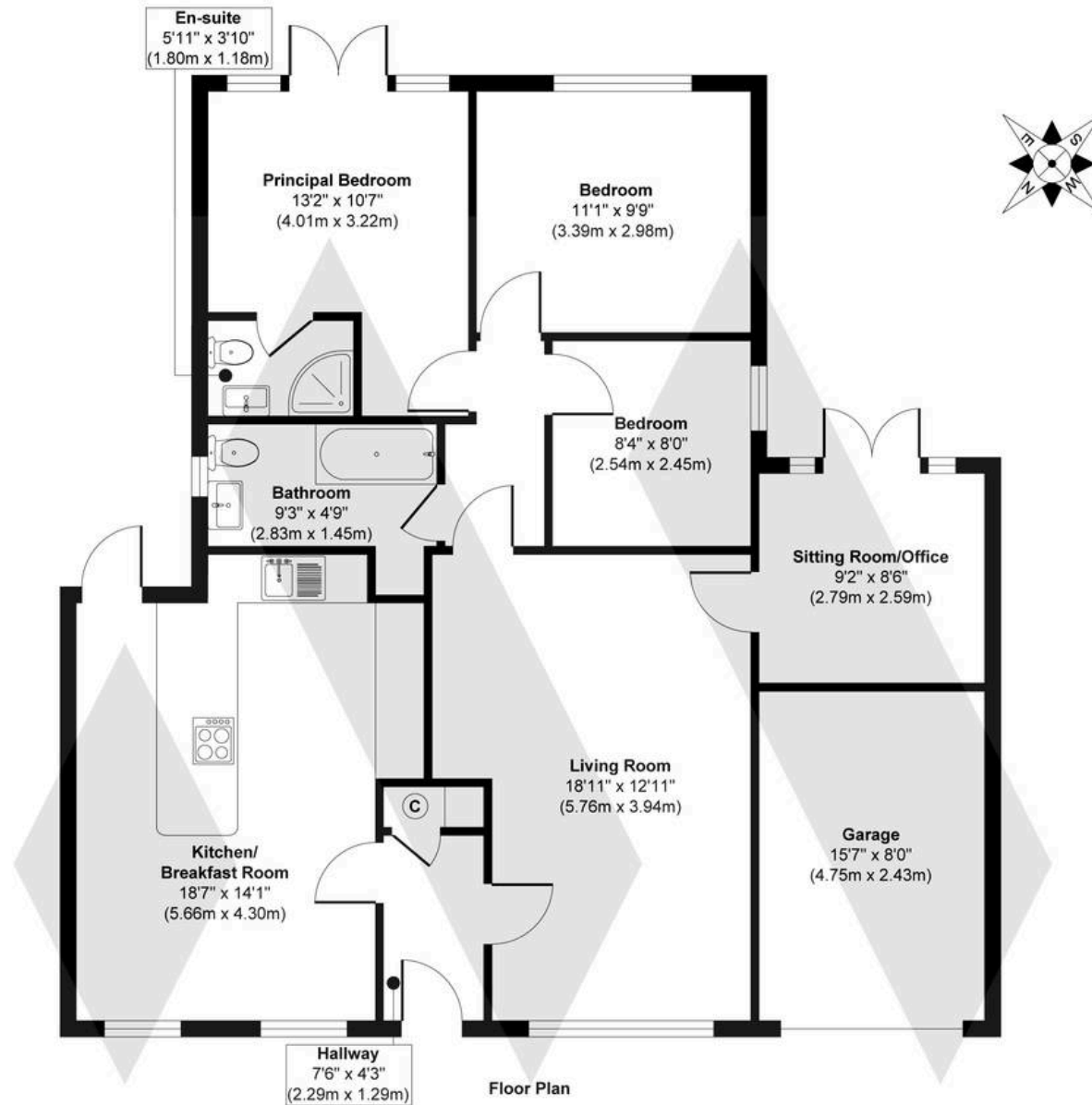
- A stunning, fully refurbished three bedroom detached bungalow
- Superb and sought after location
- Contemporary open plan kitchen design with breakfast bar
- Impressive living room
- Immaculate sitting room/home office overlooking the rear garden
- Luxurious principal bedroom with en-suite
- Two further bedrooms and luxury bathroom
- Beautiful south east facing rear garden providing privacy and tranquillity

INTERESTED?

0121 308 3355

fouroaks@moorhouse-property.co.uk





Approx. Gross Internal Floor Area 1000 sq. ft / 92.93 sq. m (Excluding Garage)

Illustration for identification purposes only, measurements are approximate, not to scale.

Produced by Elements Property

MOORHOUSE

