



RESIDENTIAL



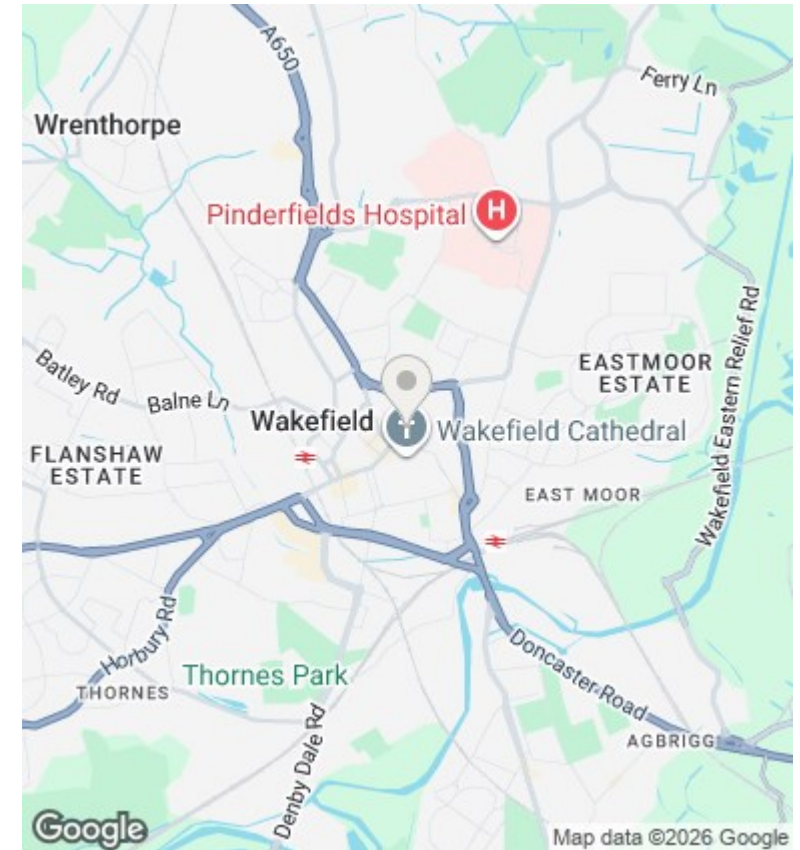
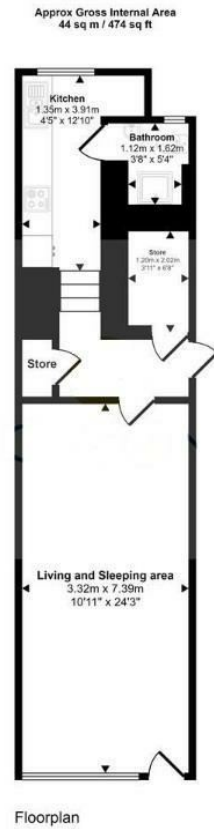
Grosvenor House, 008 Union Street, Wakefield, WF1 3FJ

£675 Per month

- Rent £675
- Deposit £778.84
- Contemporary Kitchen with Integrated Appliances
- City centre location with excellent transport links
- Private and secure intercom access
- Ground floor studio apartment

Unit 1 Feast Field, Horsforth, Leeds, LS18 4TJ
0113 3224 345

info@tkiresidential.co.uk
www.tkiresidential.co.uk



Directions

Viewings

Viewings by arrangement only. Call 0113 3224 345 to make an appointment.

Council Tax Band

A

EPC Rating:

D

Energy Efficiency Rating		Current	Potential
<i>Very energy efficient - lower running costs</i>			
(92 plus) A			
(81-91) B			
(69-80) C			
(55-68) D		67	67
(39-54) E			
(21-38) F			
(1-20) G			
<i>Not energy efficient - higher running costs</i>			
England & Wales		EU Directive 2002/91/EC	