

## Beaufort Gardens, SW3

£1,153 Per week

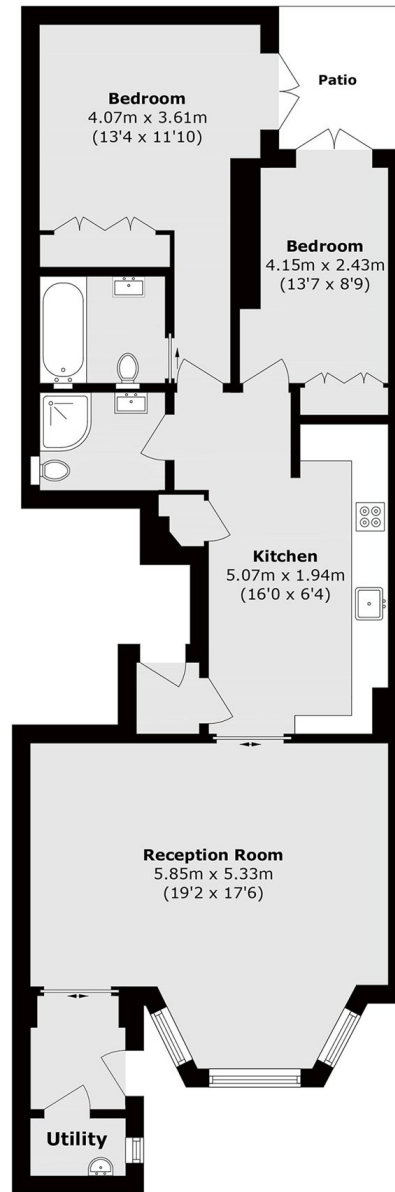
This beautifully refurbished two-bedroom apartment is situated in a highly sought-after Knightsbridge cul-de-sac and has its own private entrance. The property offers bright and spacious living accommodation, a contemporary kitchen fitted with Siemens appliances, a principal bedroom with en suite bathroom, a second double bedroom, and a separate family bathroom.

The area offers a range of excellent restaurants, including Scalini on Walton Street, Zafferano on Lowndes Street, San Lorenzo on Beauchamp Place, and Amaya on Motcomb Street.

### Features

- Two Double Bedrooms
- Two Bathrooms
- One En Suite
- Private Entrance
- Wooden Flooring
- Fitted Kitchen
- Charming Courtyard

# Beaufort Gardens, London, SW3



## Lower Ground Floor

Total area (approx.): 84.5 sq. m (909.5 sq. ft)