

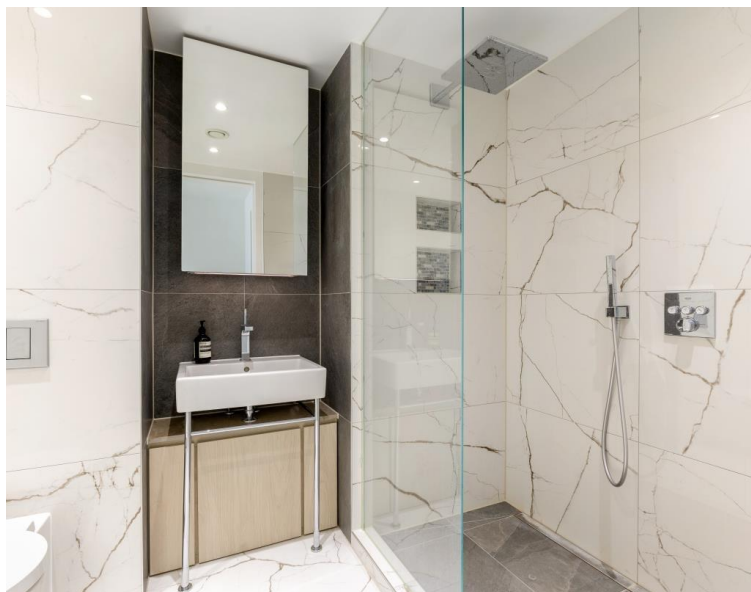
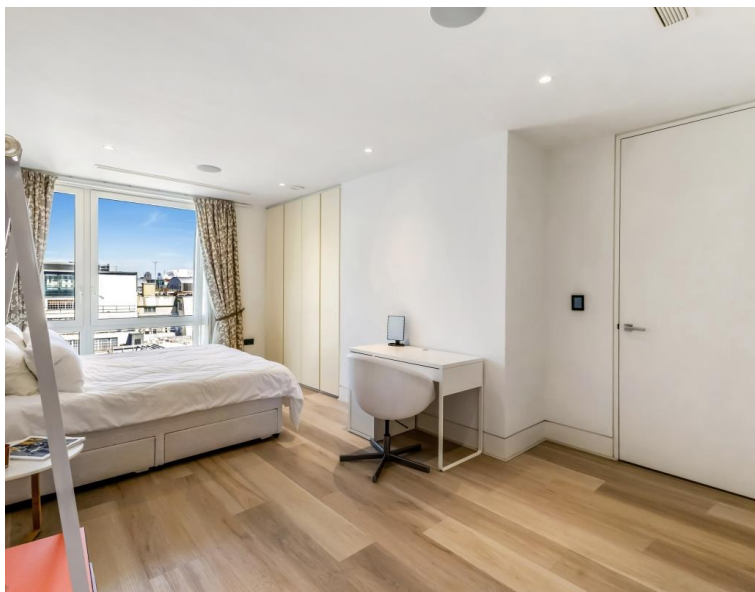


Ingestre Place, London W1F

£3,500,000 Leasehold







Description

Set on the 7th floor and extending to a well-proportioned 1889 sq ft of lateral living and entertaining space, the apartment features a large terrace accessed off both the reception room and kitchen with wonderful panoramic views.

The property offers a large dual aspect reception room with floor to ceilings windows and double doors leading on to the terrace. A modern kitchen, accessed from the reception room offers a dining area with bi-fold doors leading on to the terrace. Two good-sized bedrooms offer en-suite facilities, with an additional 3rd bedroom, shower room, and storage & airing cupboards located off a welcoming hallway with flowing natural light.

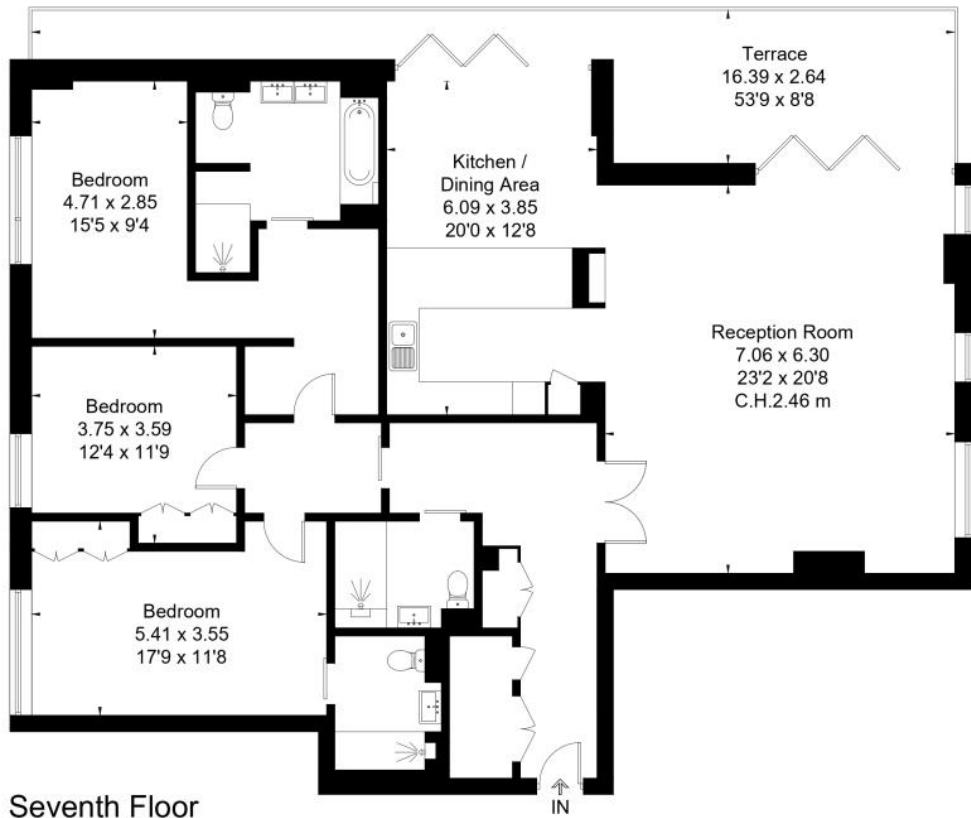
Residents of Soho 13 benefit from a daytime concierge, lift access and this apartment has the advantage of a secure underground parking space, which is a rarity in London's West End. Completed in 2016 through a joint venture between United House and Barratt London, this redevelopment transformed the former Metropolitan Police section house, Trenchard House, into a contemporary mixed-use development. The design team from TP Bennett and A&Q Partnership established a new pedestrian route connecting Silver Place to Berwick Street, revitalising this previously isolated area of Soho.

- Modern boutique building set in the heart of Soho
- Three bedrooms
- Approx. 1,889 sq ft
- Large roof terrace with Southerly views
- Three bathrooms (two en-suite)
- Ideal for entertaining
- Wonderful natural light and open space throughout
- Underfloor heating and comfort cooling
- Concierge
- Underground parking

Floorplan

1,889 sq ft | 176 sq m

Approximate Floor Area = 175.5 sq m / 1889 sq ft



Seventh Floor



This floor plan has been drawn in accordance with RICS Property Measurement 2nd edition.
All measurements, including the floor area, are approximate and for illustrative purposes only. @fourwalls-group.com #109071

Mayfair and Marylebone
St George Street,
London W1S 2FQ
+44 207 399 5550
mayfair@jll.com

Urban living, your way.

jll.co.uk/residential

© 2019 Jones Lang LaSalle IP, Inc. All rights reserved. All information contained herein is from sources deemed reliable; however, no representation or warranty is made to the accuracy thereof.

