



Mount Park Road, W5

£369,950

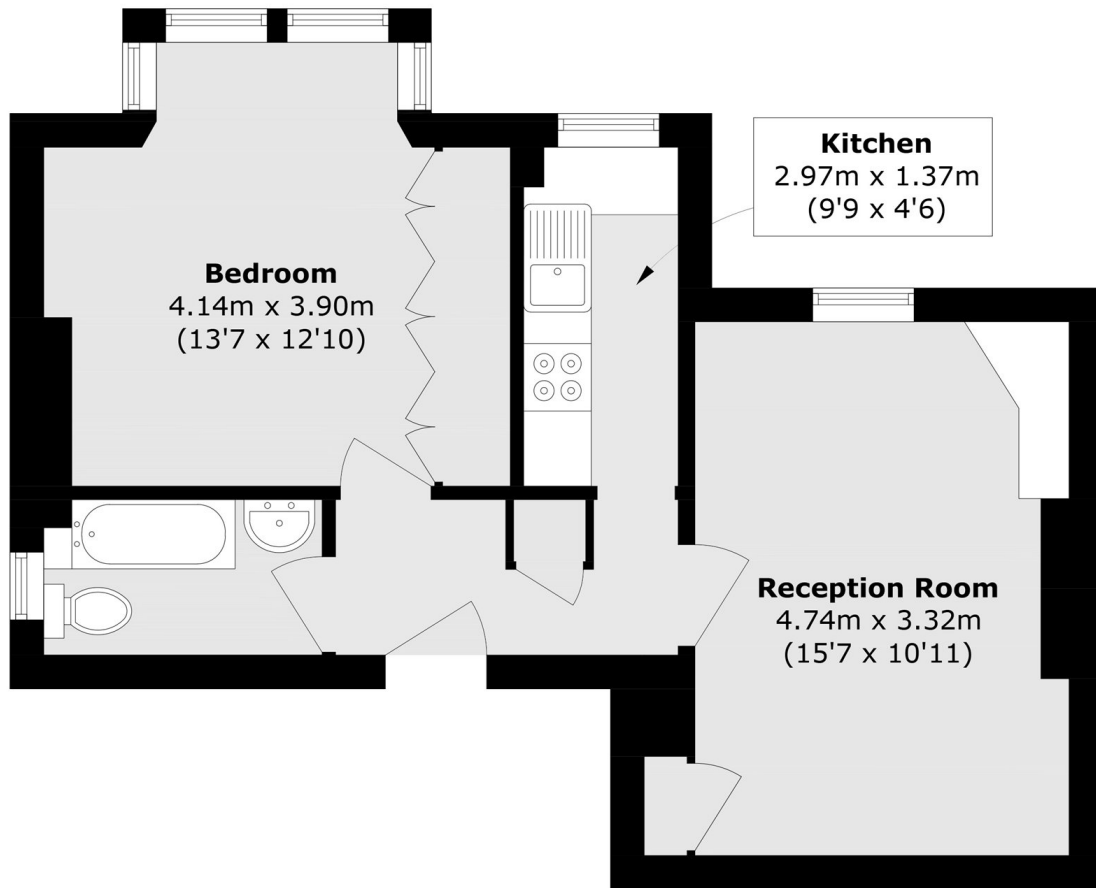
A spacious one-bedroom ground floor period conversion offered to the market with no onward chain. The property benefits from an allocated off-street parking space, a share of the freehold, and a private front garden area. An ideal first-time purchase or investment opportunity.

Ideally situated just 0.2 miles from Ealing Broadway station, providing access to the Elizabeth, Central and District lines. Occupying a prime position on the corner of two of Ealing's most sought-after residential roads, the property is perfectly placed for excellent transport links and local amenities.

Features

- One Bedroom
- Allocated Parking
- Private Garden
- Share Of Freehold
- No Onward Chain
- Close To Station

Mount Park Road, London, W5



Total area (approx.): 44.3 sq. m (476.8 sq. ft)