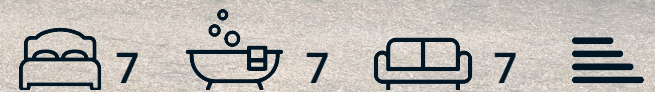




**Park Hall Parkhall Lane**  
Spinkhill, Sheffield, S21 3YD  
£3,250,000



## Park Hall Parkhall Lane

Spinkhill, Sheffield, S21 3YD

A truly exceptional seven-bedroom Grade II\* listed residence, set within approximately 4.5 acres of beautifully maintained, private grounds. This remarkable home has been carefully and sympathetically restored by the current owners, blending historic character with thoughtfully designed, versatile accommodation arranged over three floors.

Dating back to 1656, Park Hall has a rich and notable history, originally owned by the prominent Pole family, whose influence shaped much of the local area. Over the centuries, the property has evolved from a distinguished private residence to a residential country club, before returning once again to its roots as an impressive family home. Today, it stands as a striking example of period architecture, sensitively adapted for modern living.

### Park Hall

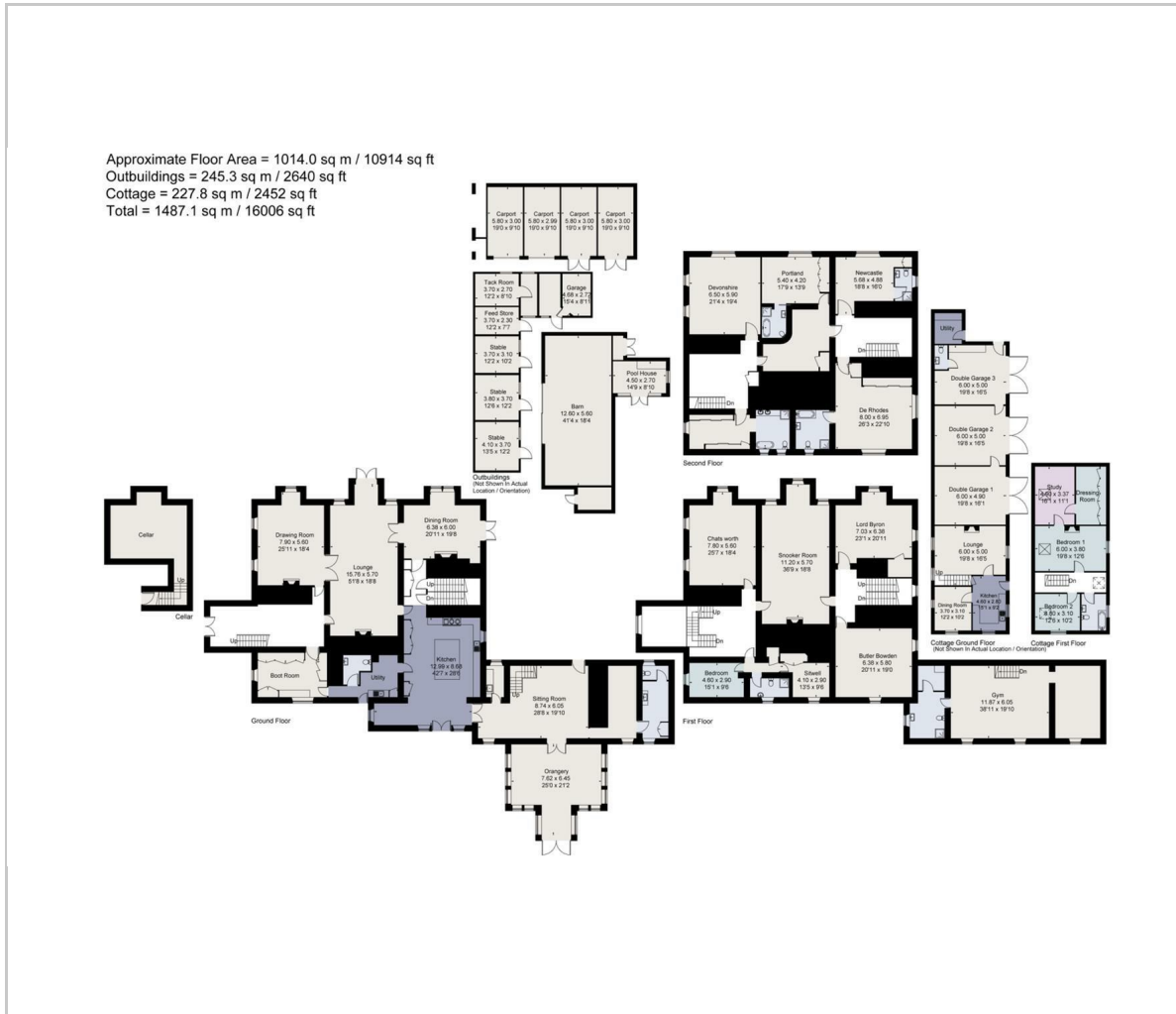
#### Location

**Dales & Peaks ForwardMove  
please read**





## Floor Plan



## Area Map



## Energy Efficiency Graph

## Viewing

Please contact our Chesterfield Office on 01246 567540 if you wish to arrange a viewing appointment for this property or require further information.

These particulars, whilst believed to be accurate are set out as a general outline only for guidance and do not constitute any part of an offer or contract. Intending purchasers should not rely on them as statements of representation of fact, but must satisfy themselves by inspection or otherwise as to their accuracy. No person in this firm's employment has the authority to make or give any representation or warranty in respect of the property.



131 Chatsworth Road, Chesterfield, Derbyshire, S40 2AP  
 T: 01246 567540

E: info@dalesandpeaks.co.uk  
 www.dalesandpeaks.co.uk