



## Selsdon Way, E14

£570,000

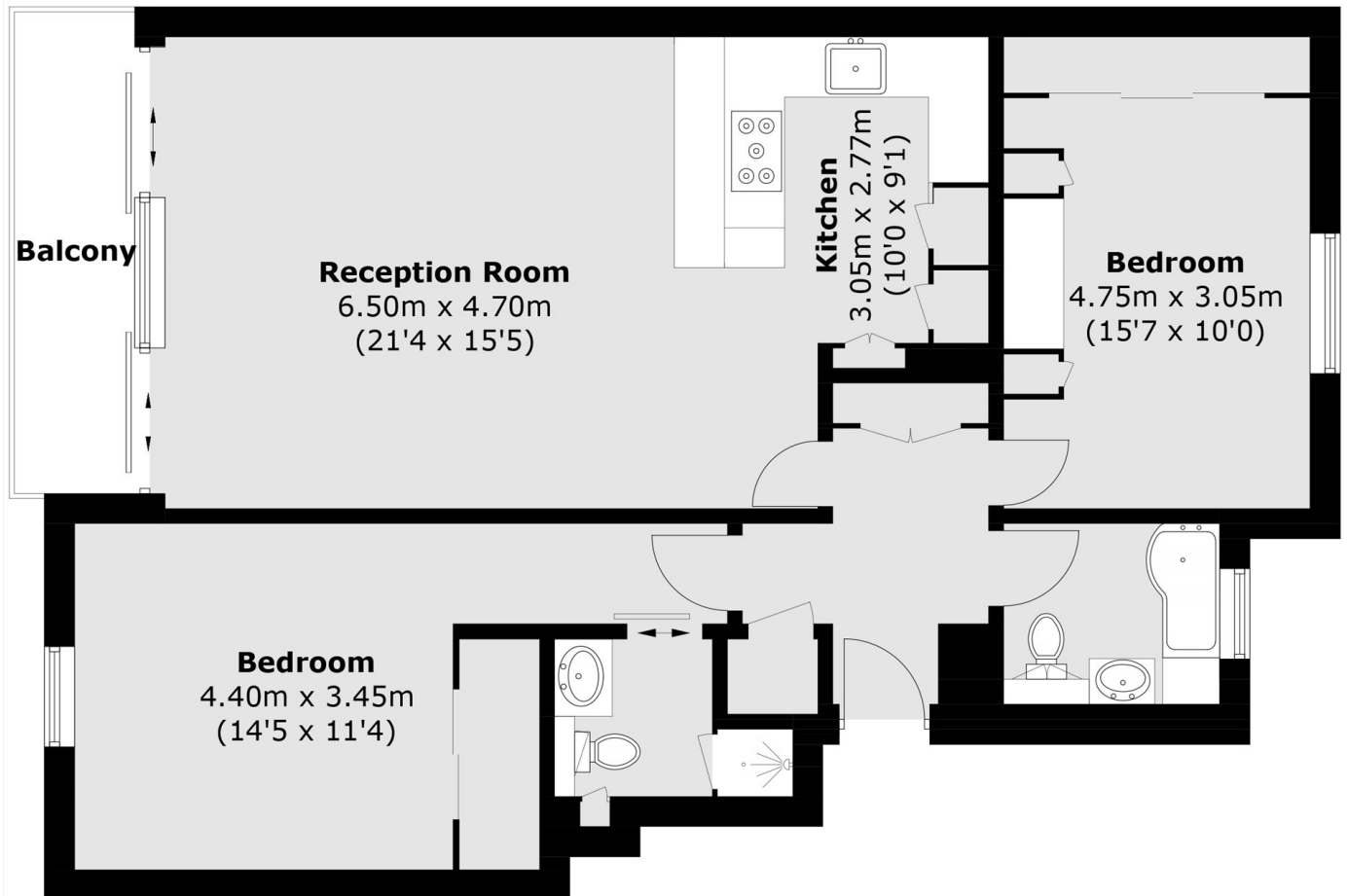
Offered to the market chain free is this well-presented two-bedroom apartment, ideally located within walking distance of Canary Wharf. The property benefits from uninterrupted water views, providing an abundance of natural light throughout. Further features include a secure entry phone system, 24-hour concierge service, and secure underground parking.

Ideally situated close to a variety of shops, bars, and restaurants, the property is also just 0.2 miles from Crossharbour DLR station, offering excellent connections into Canary Wharf, the City and surrounding areas.

### Features

- River Views
- 930 Square Feet
- Sought After Development
- Allocated Parking
- 24 Hour Concierge
- Secure Entry Phone System

# Selsdon Way, London, E14



Total area (approx.): 86.4 sq. m (930 sq. ft)  
Balcony Area = 5.8 sq. m (62 sq. ft)