



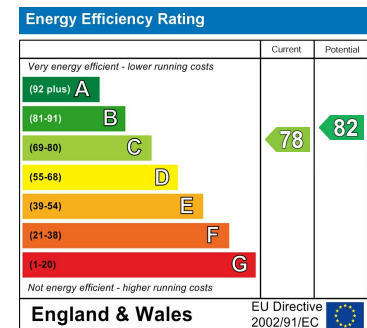
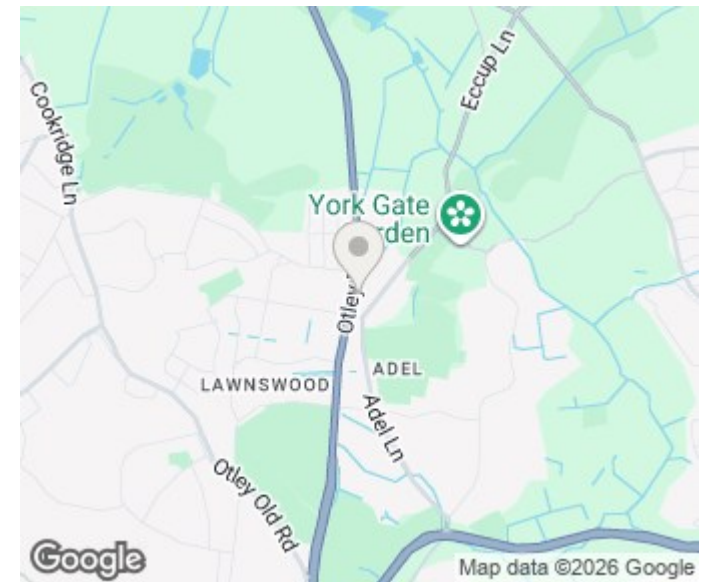
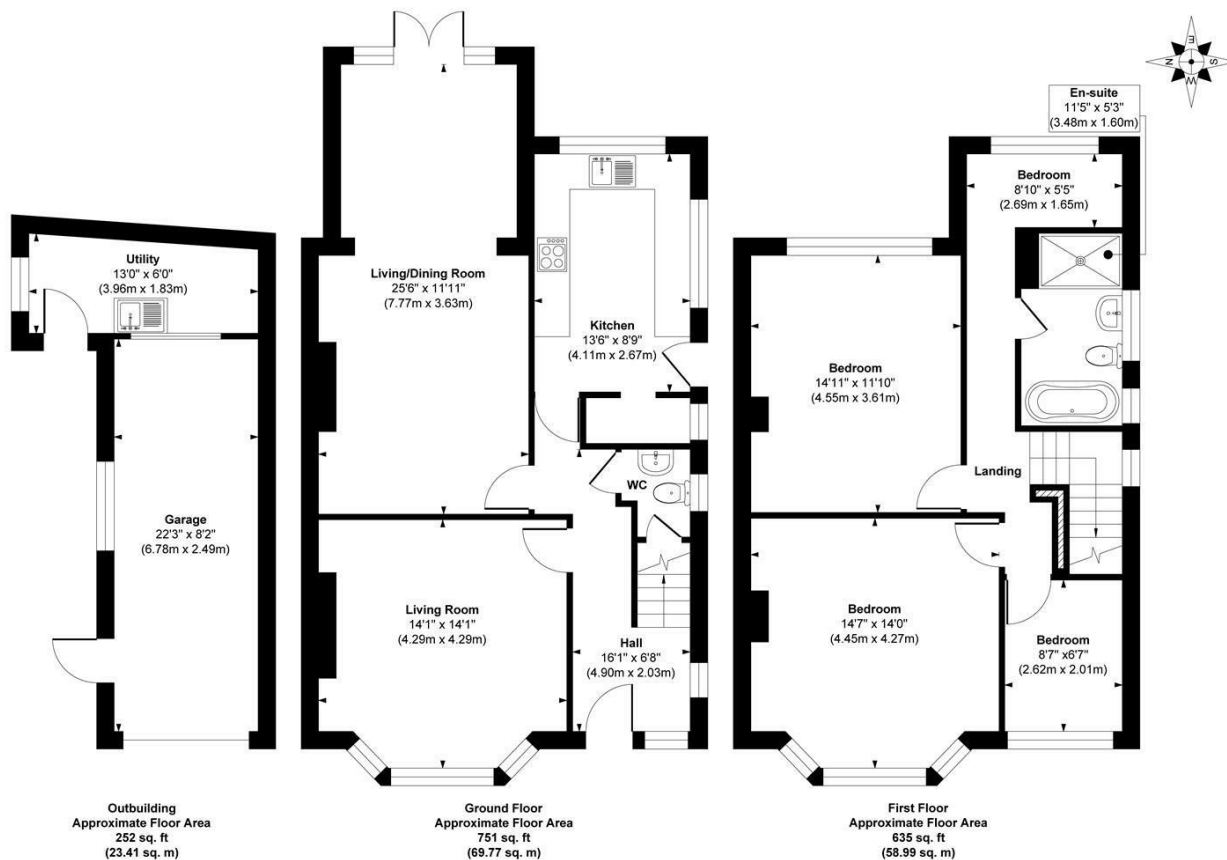
532 OTLEY ROAD, ADEL, LEEDS,
LEEDS, LS16 8DL

£550,000
FREEHOLD

Monroe is delighted to present this attractive four-bedroom house is ideally situated in the highly sought-after area of Adel, offering generous living space and excellent access to local amenities and transport links.

MONROE

SELLERS OF THE FINEST HOMES



Agents Note: Whilst every care has been taken to prepare these particulars, they are for guidance purposes only. All measurements are approximate and are for general guidance purposes only and whilst every care has been taken to ensure their accuracy, they should not be relied upon and potential buyers/tenants are advised to recheck the measurements

Alwoodley Sales
 716 King Lane Alwoodley
 Leeds
 West Yorkshire
 LS17 7BA

0113 870 4443
 hello@monroeestateagents.com
 www.monroeestateagents.com

MONROE

SELLERS OF THE FINEST HOMES