

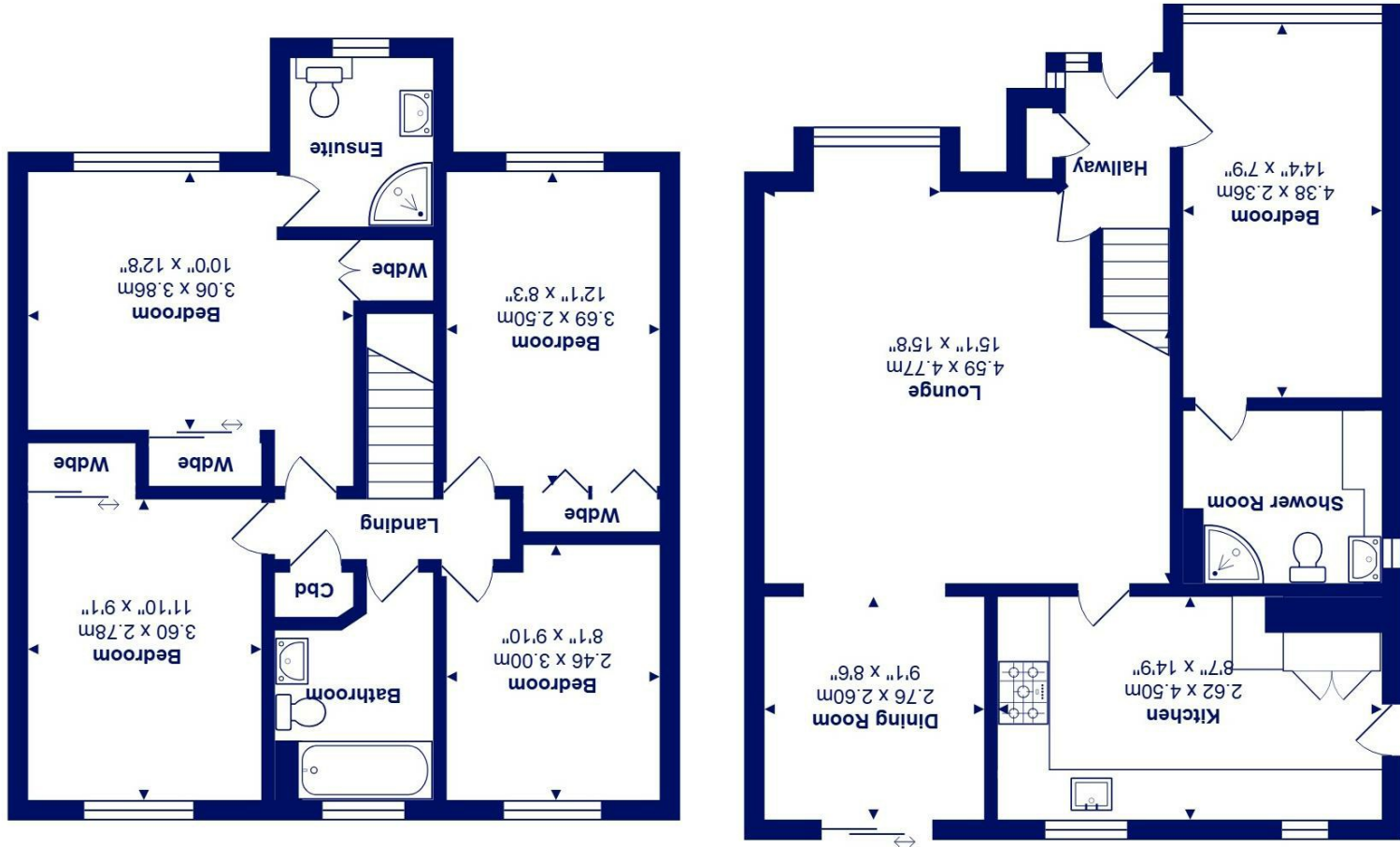


All measurements are approximate and for display purposes only  
Total Area: 118.3 m<sup>2</sup> ... 1273 ft<sup>2</sup>



Ground Floor

First Floor



14 Swordfish Drive, Mudeford, BH23 4TP

£525,000

**Mitchells**  
1963 — TODAY

Rarely available in this area at this price! A five bedroom, three bathroom (two ensuite) modern detached family house of approaching 1300 sq ft. This includes a ground floor ensuite bedroom, ideal for a dependent relative or large family. There is also excellent living space including a good size well fitted kitchen. The rear garden is larger than average and offers space for a rear extension, if required.

Situated on this popular development adjoining Mudeford Wood Nature Reserve and recreation grounds and also just a short walk to the award winning beaches at Friars Cliff together with local shops and public house.

- Potential for a rear extension
- Ground floor bedroom with ensuite
- Large lounge with bay window
- Separate dining area
- Well fitted good size kitchen
- Master bedroom with ensuite
- Built in wardrobes to 3 bedrooms
- Off road parking for 2/3 vehicles
- Good size rear garden
- Quiet location in no through road

EPC Rating Band: D  
Council Tax Band: E  
Freehold

Successful buyers will be required to complete online identity checks provided by Lifetime Legal. The cost of these checks is £48 inc. VAT per purchase which is paid in advance, directly to Lifetime Legal. This check verifies your identity in line with our obligations as stipulated by our regulatory body, HMRC

