



Hornsey Lane | London | N6

£1,750 Per month |



ADN
RESIDENTIAL

A contemporary one-bedroom apartment set on the first floor of a purpose-built block. Ideally positioned within easy reach of both Highgate Underground Station (Northern Line, 0.7 miles) and Archway Tube Station (0.6 miles), as well as the charming boutiques, cafés, and restaurants of Highgate Village. The property features high ceilings throughout and offers a spacious reception room, a modern fitted kitchen, a double bedroom, and a newly refurbished bathroom.

- Reception Room
- Kitchen
- Bedroom
- Family Bathroom
- Communal Garden
- Permit Parking

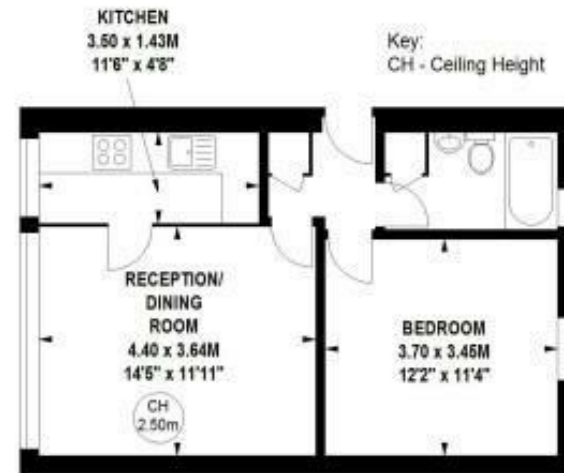
Council Tax Band: C
EPC: D





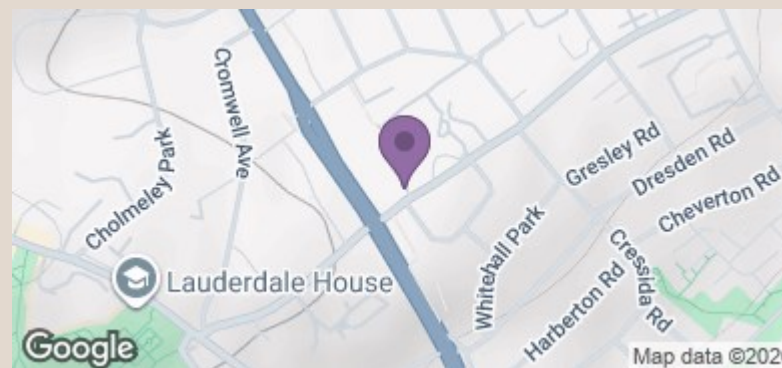
WREN VIEW, N6

Approximate gross internal area
43 sq m / 460 sq ft



First Floor

NOT TO SCALE



Energy Efficiency Rating		Current	Potential
Very energy efficient - lower running costs			
(92 plus) A			
(81-91) B			83
(69-80) C			
(55-68) D		65	
(39-54) E			
(21-38) F			
(1-20) G			
Not energy efficient - higher running costs			
England & Wales		EU Directive 2002/91/EC	