



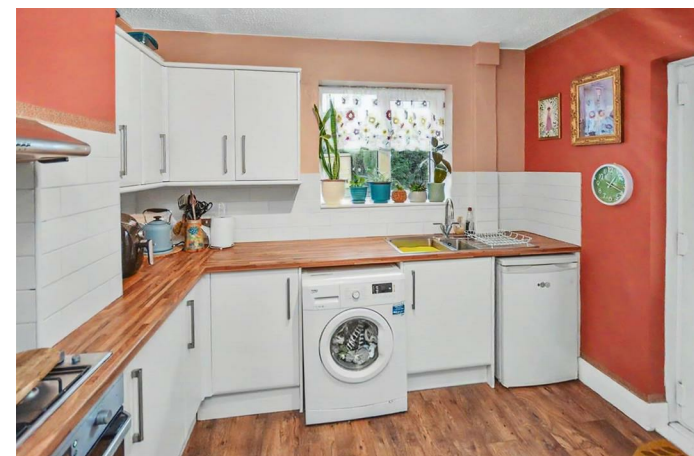
59 Westfields Road

Corby, Northamptonshire NN17 1HF

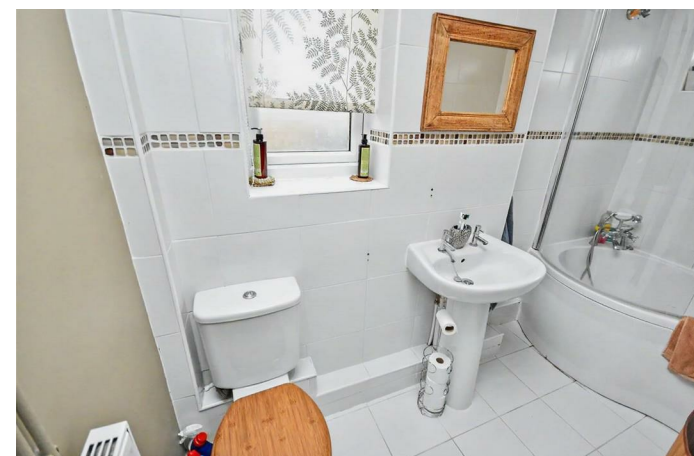
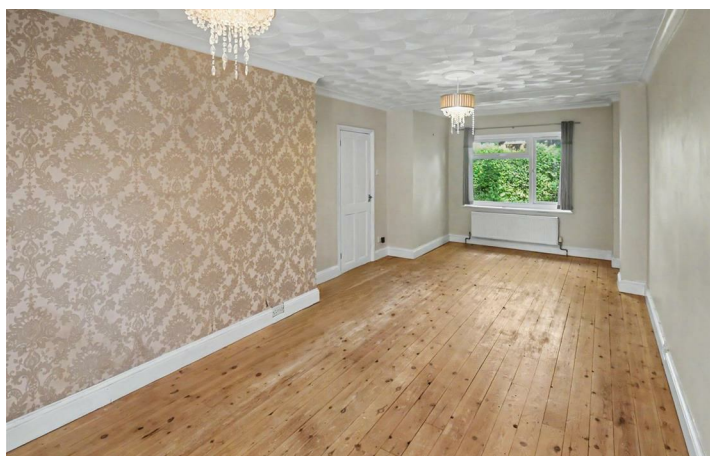


Simpson West

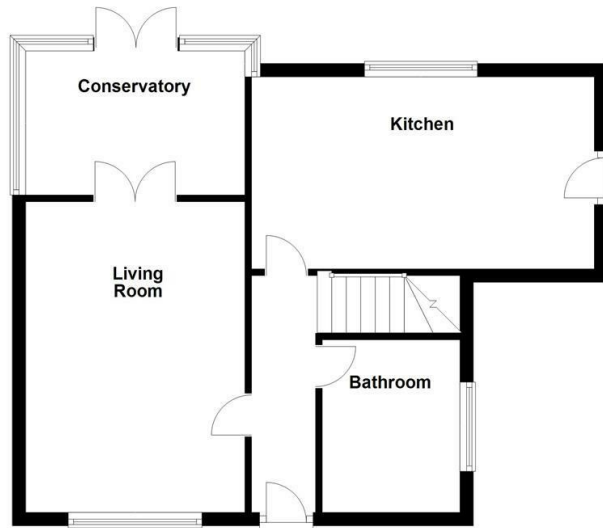
Simpson West Lettings are proud to offer to the rental market this charming four bedroom semi detached family home, located within the popular Lloyds are within Corby. The property is within walking distance to the local school and the town centre. Features include entrance hall, family bathroom with a three-piece suite and shower over the bath and a modern fitted kitchen. The property also boasts a large living/ dining room with double doors leading to a generous sized conservatory which has patio doors leading out to the rear gardens. To the first floor there are two double bedrooms and two single bedrooms. At the rear is a large garden that is fully enclosed with lawn and decking area. To the front is off road parking. Energy rating D. Council Tax Band A.



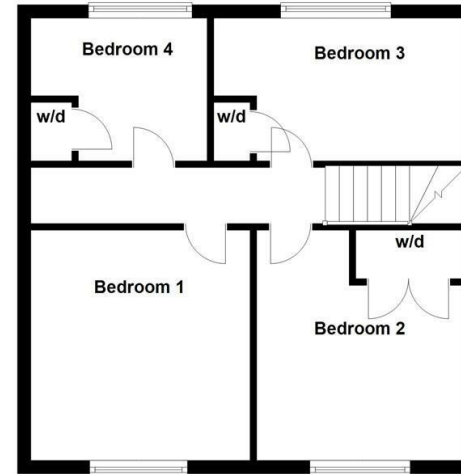
£1,250 Per Calendar Month



Ground Floor




First Floor



Floor plan not to scale - for guidance purposes only.
Plan produced using PlanUp.



Energy Efficiency Rating

	Current	Potential
<i>Very energy efficient - lower running costs</i>		
(92 plus) A		
(81-91) B		
(69-80) C		
(55-68) D		
(39-54) E		
(21-38) F		
(1-20) G		
<i>Not energy efficient - higher running costs</i>		
England & Wales	EU Directive 2002/91/EC 	



When you buy with Simpson West, you know **you'll be in safe hands**. From the moment you walk through our doors, we'll make you **feel truly welcome**. Our sales consultants and financial advisors will take you through **every step of the process**, offering **free expert advice** along the way, from help choosing the right mortgage and insurance through to finding your conveyancer. And if you need help selling your home too, **with over 20 years of local experience, you can trust us to get you moving**.



**Simpson
West**

Making Every
Journey Personal



01536 202007

info@simpsonwest.co.uk

<https://www.simpsonwest.co.uk/>

64 Corporation Street, Corby, Northants, NN17 1NH