



**Guide Price**  
**£250,000**

**Share of  
Freehold**

2x  1x  1x 

**College Court,  
Ashburton Road,  
Croydon, Surrey, CR0**

**OVER 60?**

Secure this property  
for up to **59% less!**

**cubitt&west**  
Helping you move forwards





## Main features

- Second floor apartment
- Chain Free
- Some updating required
- Communal garden
- Close to local amenities, shops, restaurants and eateries
- Great transport links with a 3 minute walk to the tram stop giving access to East Croydon station

## Accommodation

### SECOND FLOOR

Hallway

Living Room: 22'2 x 10'4 (6.76m x 3.15m)

Kitchen: 10'4 x 6'6 (3.15m x 1.98m)

Bedroom 1: 12'7 x 9'7 (3.84m x 2.92m)

Bedroom 2: 12'5 x 9'1 (3.79m x 2.77m)

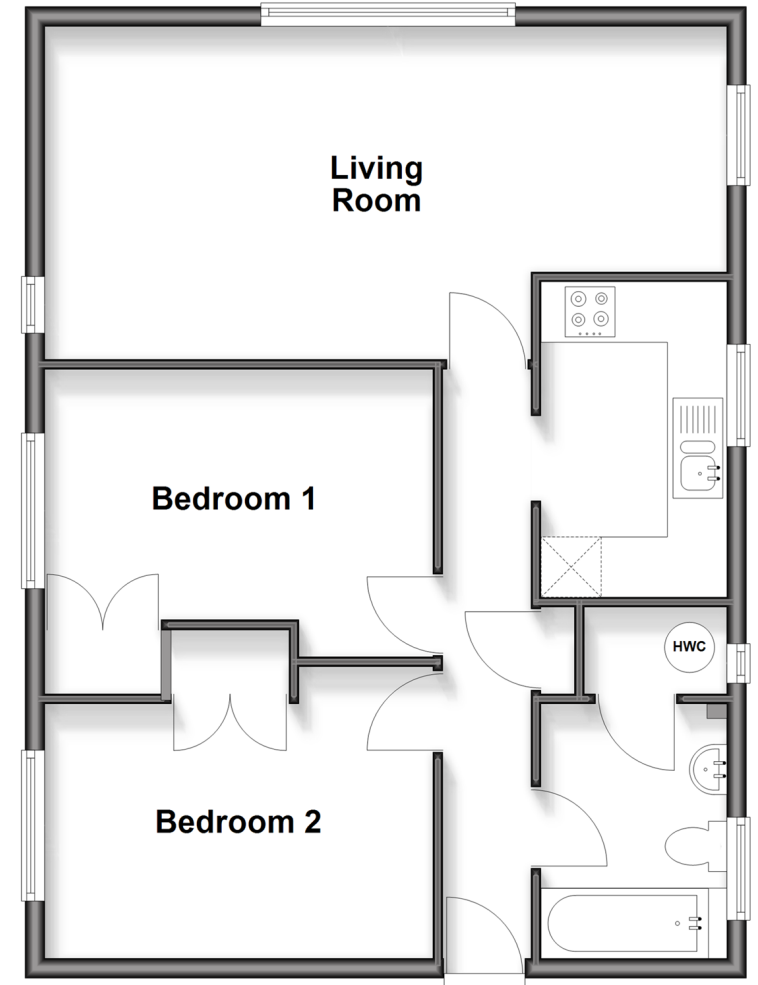
Bathroom : 8'3 x 6'8 (2.52m x 2.03m)

### OUTSIDE

Communal Gardens

## Second Floor

Approx. 63.4 sq. metres (682.8 sq. feet)



**Call Shirley - 020 8654 3037 ■ [cubittandwest.co.uk](http://cubittandwest.co.uk)**

- Legal advice should be taken to verify fixtures/fittings, planning, alterations and/or lease details
- Appliances & services are untested, dimensions are approximate and floor plans are not to scale
- Through a Homewise Home For Life Plan people aged 60+ can secure this property for up to 59% less, by purchasing a Lifetime Lease



21712076/20260124/SR/PH