



15 Rose Crescent, Skelmersdale

Skelmersdale

Guide Price £140,000

15 Rose Crescent

Skelmersdale

Well-presented three-bedroom mid-terrace with spacious rooms, modern kitchen, gardens front and rear, ground floor WC, and no onward chain. Ideal for families, first-time buyers, or investors.

Council Tax band: A

Tenure: Freehold

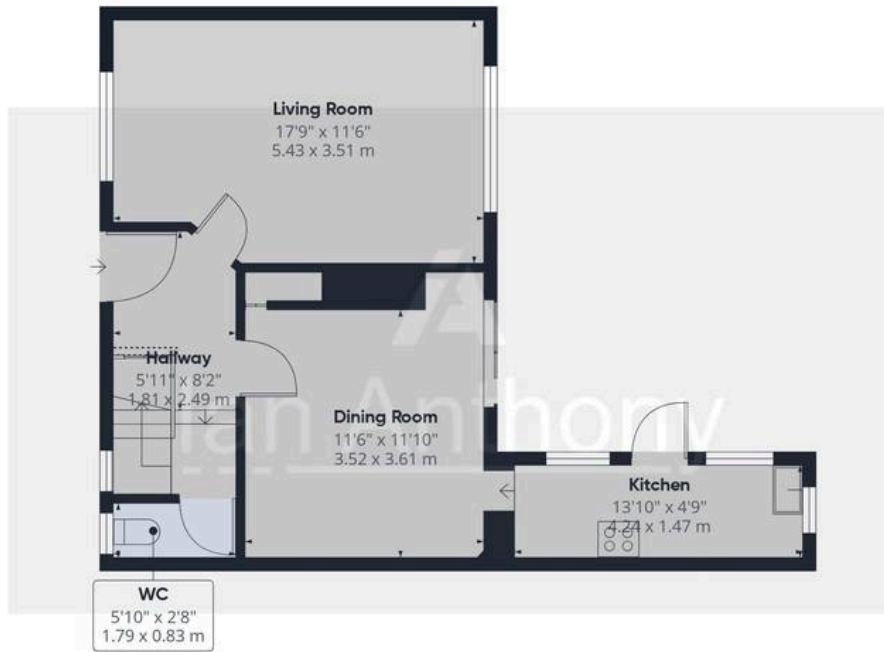
EPC Energy Efficiency Rating: D

EPC Environmental Impact Rating:

- Spacious living room
- Separate dining room
- Modern kitchen layout
- Three bedrooms
- Ground floor WC
- First floor bathroom







Ground Floor



Floor 1



Approximate total area⁽¹⁾

939 ft²

87.3 m²

Reduced headroom

1 ft²

0.1 m²

(1) Excluding balconies and terraces

Reduced headroom

----- Below 5 ft/1.5 m

Calculations reference the RICS IPMS 3C standard. Measurements are approximate and not to scale. This floor plan is intended for illustration only.

GIRAFFE360



IAN ANTHONY

5 Burscough Street, Ormskirk - L39 2EG

01695580888

enquiries@iananthonyestates.co.uk

iananthonyestates.co.uk/

