

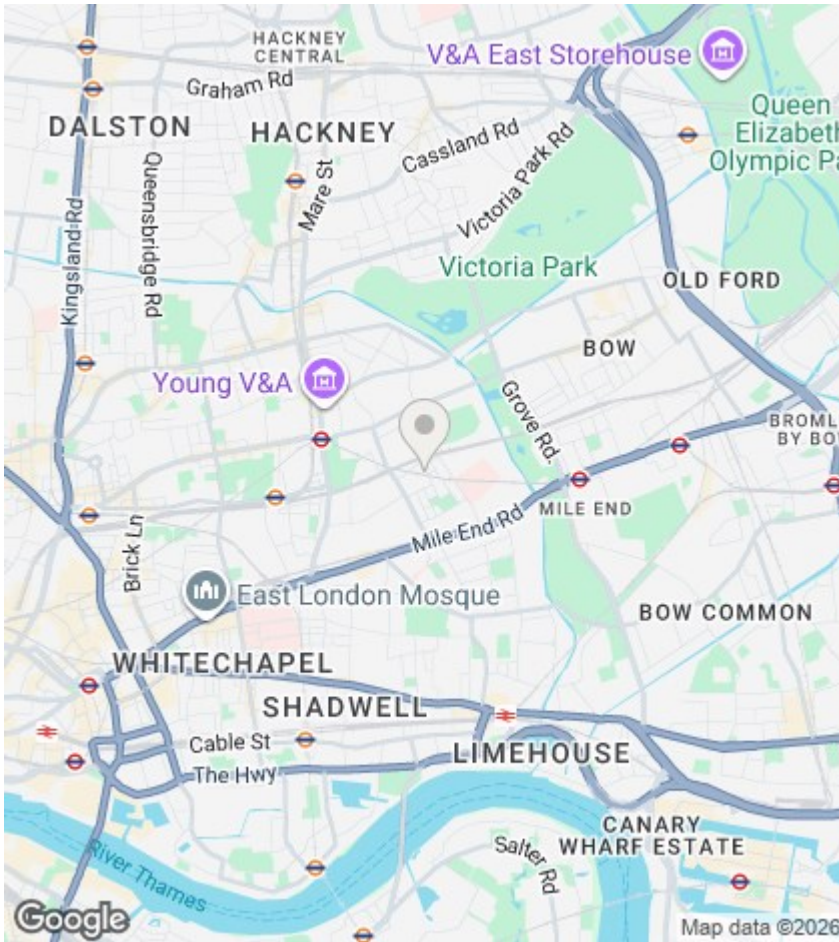
Hammonds



Flat 24, 39 Pemberton Court Portelet Road, London, E1 4EN

£555,000

- 4 spacious bedrooms
- 2 sleek bathrooms
- Located in E1, London
- Close to transport links
- Bright and airy rooms
- Modern new finish
- 2 private balconies
- Contemporary new build
- Ideal for families
- Viewing recommended



Directions

Viewings

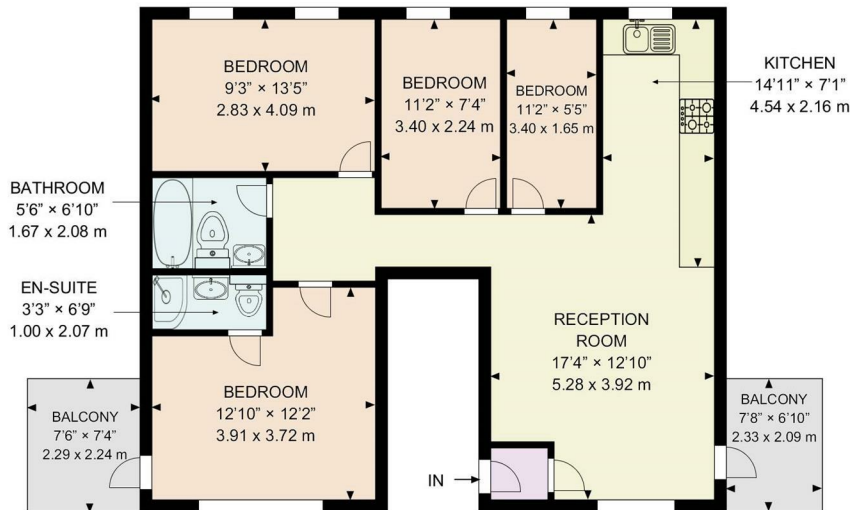
Viewings by arrangement only. Call 02089802226 to make an appointment.

Council Tax Band:

B

EPC Rating:

Energy Efficiency Rating		Current	Potential
Very energy efficient - lower running costs			
(92 plus) A			
(81-91) B			
(69-80) C			
(55-68) D			
(39-54) E			
(21-38) F			
(1-20) G			
Not energy efficient - higher running costs			
England & Wales		EU Directive 2002/91/EC	



FLAT 24 PEMBERTON CT, PORTLET ST, E1 4EN