

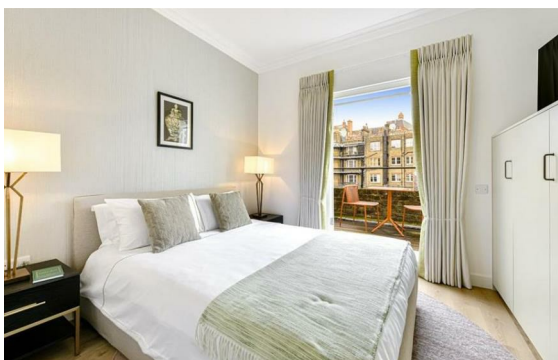
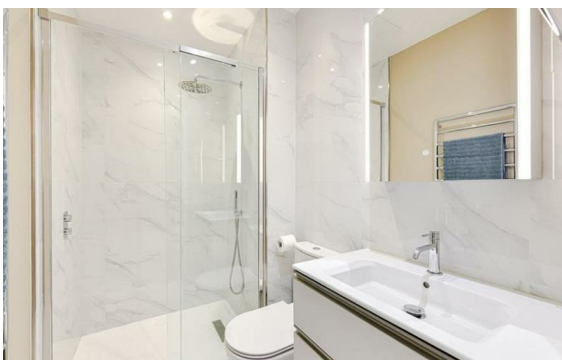


Charles Street, Mayfair, London, W1J

Rent £1,725 Per Month

2 Bed | 2 Bath | 1 Reception

Please call us on 020 7724 2233 or email us info@newingtonstates.com to book a viewing.



60 Upper Montagu Street

London

W1H 1SN

020 7724 2233

info@newingtonstates.com

A beautifully presented two-bedroom, two-bathroom lateral apartment with west-facing views over Hyde Park, located in an elegant building on Charles Street with lift and 24-hour concierge.

The apartment offers a spacious open-plan reception and dining area, a sleek modern kitchen with fitted appliances, and two generously sized double bedrooms, both with built-in storage and en-suite bathrooms. Ideally positioned in the heart of Mayfair, moments from Hyde Park and world-class amenities.

EPC rating: C

Energy Efficiency Rating: C

Agents Note: Whilst every care has been taken to prepare these particulars, they are for guidance purposes only. All measurements are approximate and are for general guidance purposes only and whilst every care has been taken to ensure their accuracy, they should not be relied upon and potential buyers/tenants are advised to recheck the measurements.

<http://www.newingtonstates.com>