

Caspian Way, Purfleet

Guide Price £385,000



- No onward chain
- A well presented and fantastic size three bedroom family home
- Excellent size living space throughout
- Lovely size lounge/diner
- Nice size kitchen
- Ground floor wc and well appointed family bathroom
- Three spacious bedrooms
- Wonderful size rear garden
- Allocated parking
- Located approximately 0.3 miles from Purfleet train station



GUIDE PRICE £375,000 - £400,000.

Nestled in the desirable area of Caspian Way, Purfleet, this well-presented terraced house offers an exceptional opportunity for families seeking a comfortable and spacious home. Boasting three generously sized bedrooms, this property is designed to accommodate modern family living with ease and is being sold with the benefit of no onward chain.

Upon entering, you are greeted by an inviting entrance hallway that leads to a convenient ground floor WC. The heart of the home is the lovely lounge/diner, which provides an excellent space for relaxation and entertaining. The adjoining kitchen is well-equipped, making it perfect for culinary enthusiasts and family gatherings alike.

The first floor features three spacious bedrooms, each offering ample natural light and storage options, ensuring a restful retreat for all family members. The well-appointed family bathroom is designed with both style and functionality in mind, catering to the needs of a busy household.

Outside, the property boasts a wonderful size rear garden, ideal for children to play or for hosting summer barbecues with friends and family. Additionally, allocated parking ensures convenience for residents and guests alike.

This property is ideally located approximately 0.3 miles from Purfleet train station making commuting a breeze.

This fantastic family home combines comfort, space, and a prime location, making it an excellent choice for those looking to settle in Purfleet. With its excellent living space and thoughtful design, this property is sure to impress. Don't miss the chance to make this charming house your new home.

Entrance hall commences with stairs leading to first floor accommodation. Tiled flooring.
Access is given to ground floor cloakroom/WC.

Kitchen 10'3 x 7'2 double glazed window to front. Range of wall and base mounted units with matching storage drawers. Work surfaces housing sink drainer with swan neck mixer tap. Hob, oven and extractor hood to remain. Space for other appliances.

Lounge 18'3 x 14'5 French double glazed doors to rear. Double glazed windows. Storage cupboard. Wooden style flooring.

First floor landing is home to three bedrooms and family bathroom.

Bedroom one 13'2 x 9'3 double glazed window to front. Storage cupboard.

Bedroom two 11'6 x 8'3 double glazed window to rear.

Bedroom three 10'8 x 6'10 double glazed window to rear.

Bathroom comprises, white panel bath fitted with shower/mixer tap and glass splash screen door. Wash hand basin and WC. Part tiling to walls.

Externally the property has a good size rear garden. Commencing with decked seating area.



Colubrid.co.uk

THE SMALL PRINT:

Council Tax Band: D
Local Authority: Thurrock

We've done our homework, but we aren't fortune tellers. We haven't poked the boiler, flicked the switches, or tested every light bulb. Nothing here counts as a contract or statement of fact—get your solicitor to check all the serious stuff, like tenure, parking, planning permission, building regs, and all that jazz!

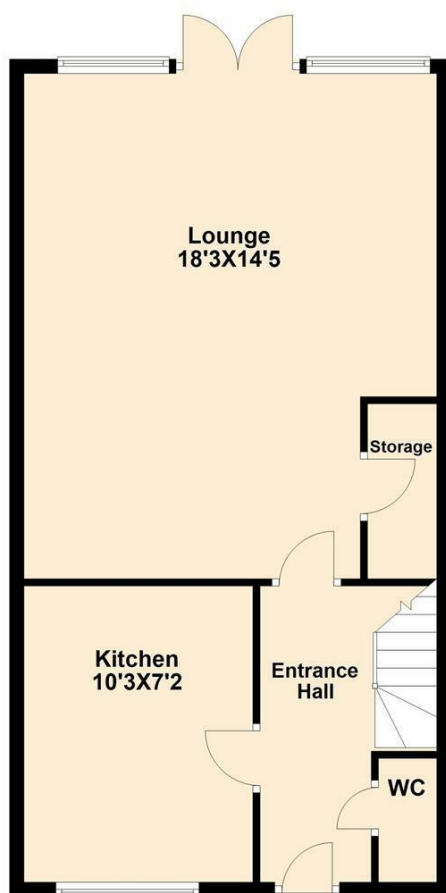
Measurements? Guides only. Floorplans? Handy, but not perfectly to scale. Travelling far? Call first—clarification is free, petrol is not.

AML Checks - Law says we must run one. £60 + VAT per buyer. Tiny toll, big compliance.

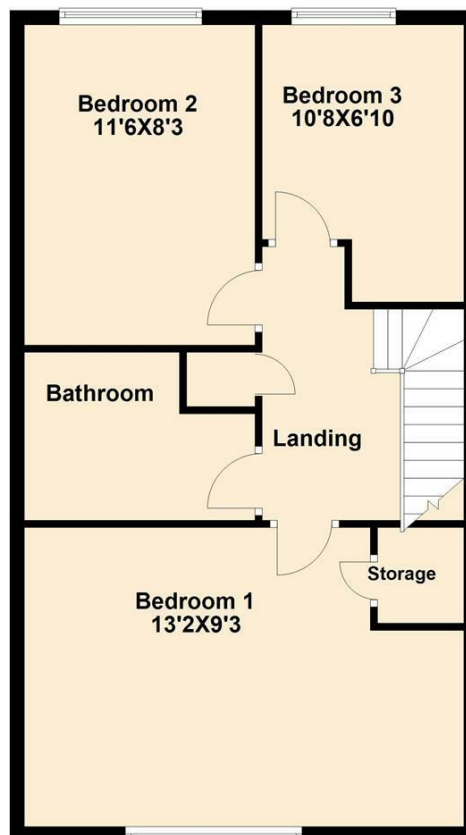
Buyer Reservation Fee - Offer accepted? Pay a reservation fee (min £1,000) to lock it in. VIP pass to the property, protects against gazumping. Complete the sale? Fee refunded. Things go sideways? Sometimes non-refundable. Head to our website for full details – or skip the scrolling and just call.

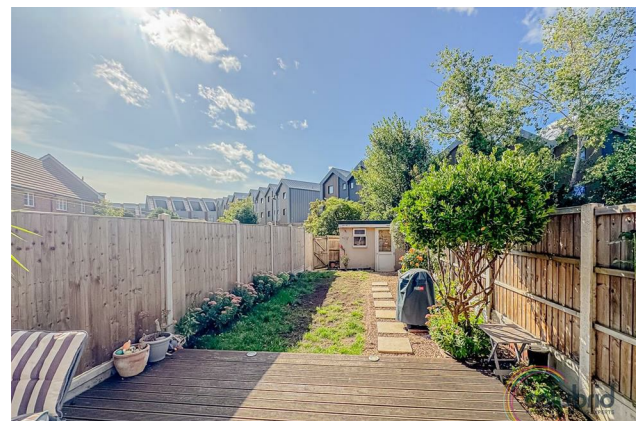


Ground Floor



First Floor





Colubrid.co.uk