

Mike  
**Dobson**



**39 Milton Drive**

Scholes, Leeds, LS15 4BS

**£285,000**

# 39 Milton Drive

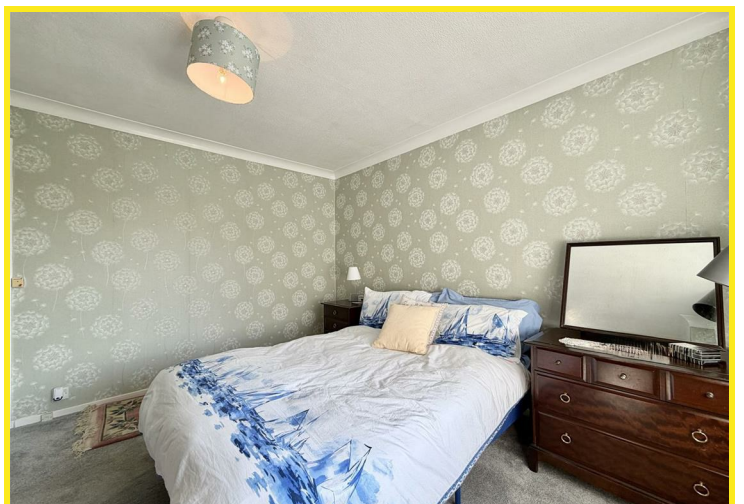
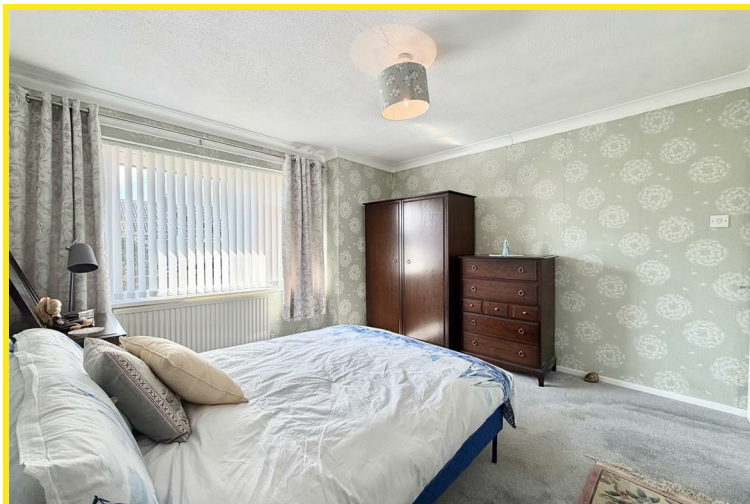
Nestled on the charming Milton Drive in Scholes, Leeds, this immaculate semi-detached bungalow presents an exceptional opportunity for those seeking a comfortable and modern living space. The property boasts two well-proportioned bedrooms, with the second bedroom currently serving as a delightful dining room, allowing for versatile use of space.

Upon entering, you will be greeted by a beautifully presented interior that has been recently refurbished to a high standard. The modern kitchen is a standout feature, equipped with an integrated oven and an induction hob, making it a joy for any home cook. The spacious reception room offers a welcoming atmosphere, perfect for relaxation or entertaining guests.

At the rear, a lovely conservatory with tiled floors provides a serene spot to enjoy the views of the expansive garden. This stunning outdoor space features both a patio and a lawned area, ideal for summer gatherings or quiet afternoons in the sun.

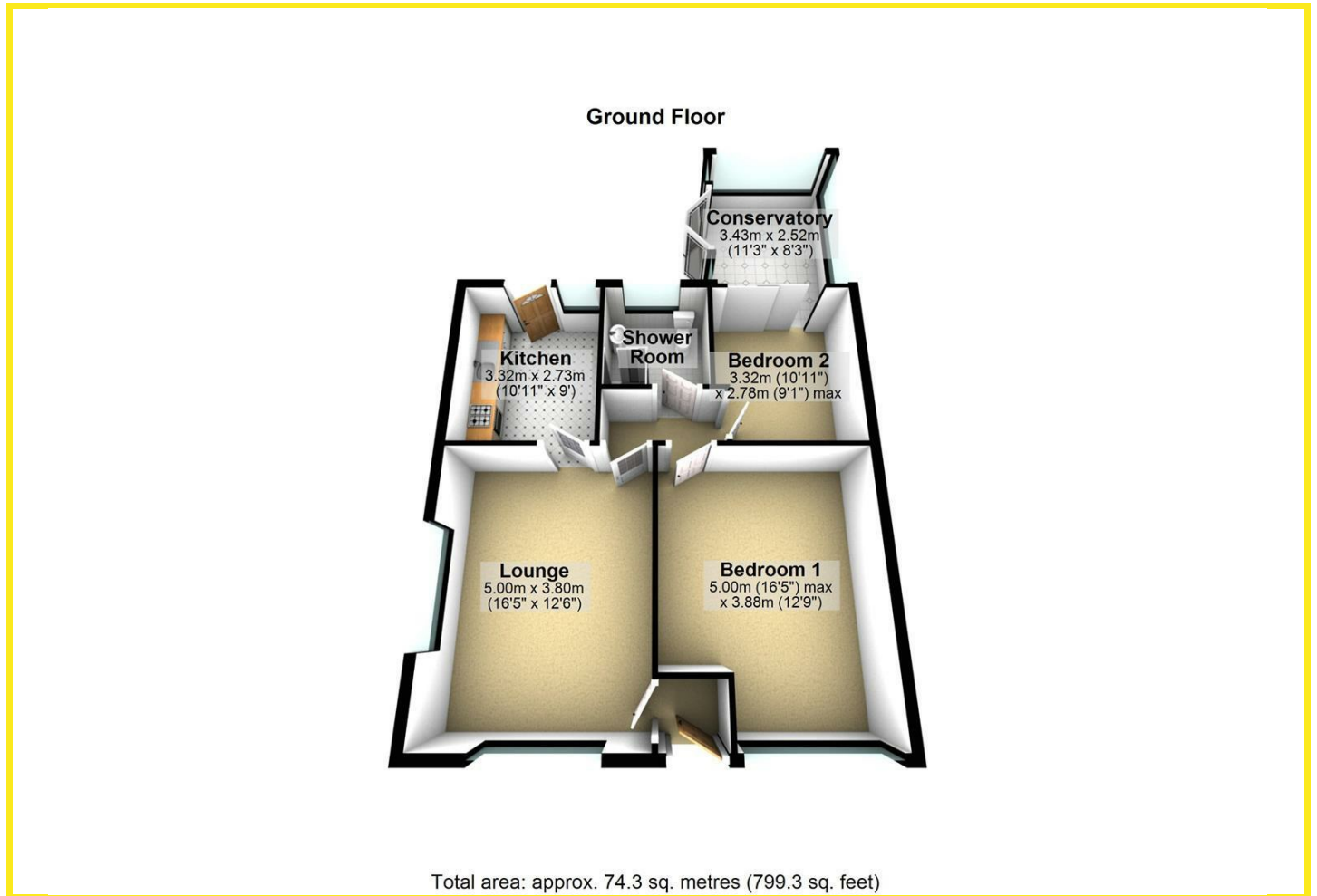
The property also includes a well-appointed shower room with a double shower, ensuring convenience and comfort. Additional highlights include gas central heating, new windows and doors, and a large boarded loft space complete with power and light, offering ample storage or potential for further development.

With a combi boiler that has been serviced annually and the added benefit of no chain, this bungalow is ready for you to move in and make it your own. This property is a true gem in a desirable location, perfect for those looking for a peaceful yet modern lifestyle.





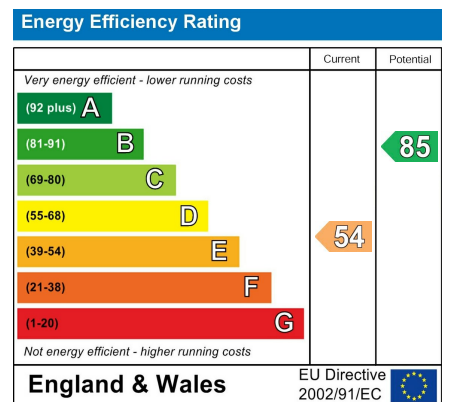
## Floor Plan



## Area Map



## Energy Efficiency Graph



## Directions

On entering the village of Scholes from the direction of Leeds or Barwick In Elmet. Follow Main Street which then becomes Station Road. Turn right onto Milton Drive and the property can be found as indicated by our Agents board on the left hand side of the road.

These particulars, whilst believed to be accurate are set out as a general outline only for guidance and do not constitute any part of an offer or contract. Intending purchasers should not rely on them as statements of representation of fact, but must satisfy themselves by inspection or otherwise as to their accuracy. No person in this firm's employment has the authority to make or give any representation or warranty in respect of the property.

4 Main Street, Garforth, LS25 1EZ

Tel: 0113 2864276 Email: [headoffice@mdobson.co.uk](mailto:headoffice@mdobson.co.uk) <https://www.mdobson.co.uk>