

## Worple Road, SW20

£640,000

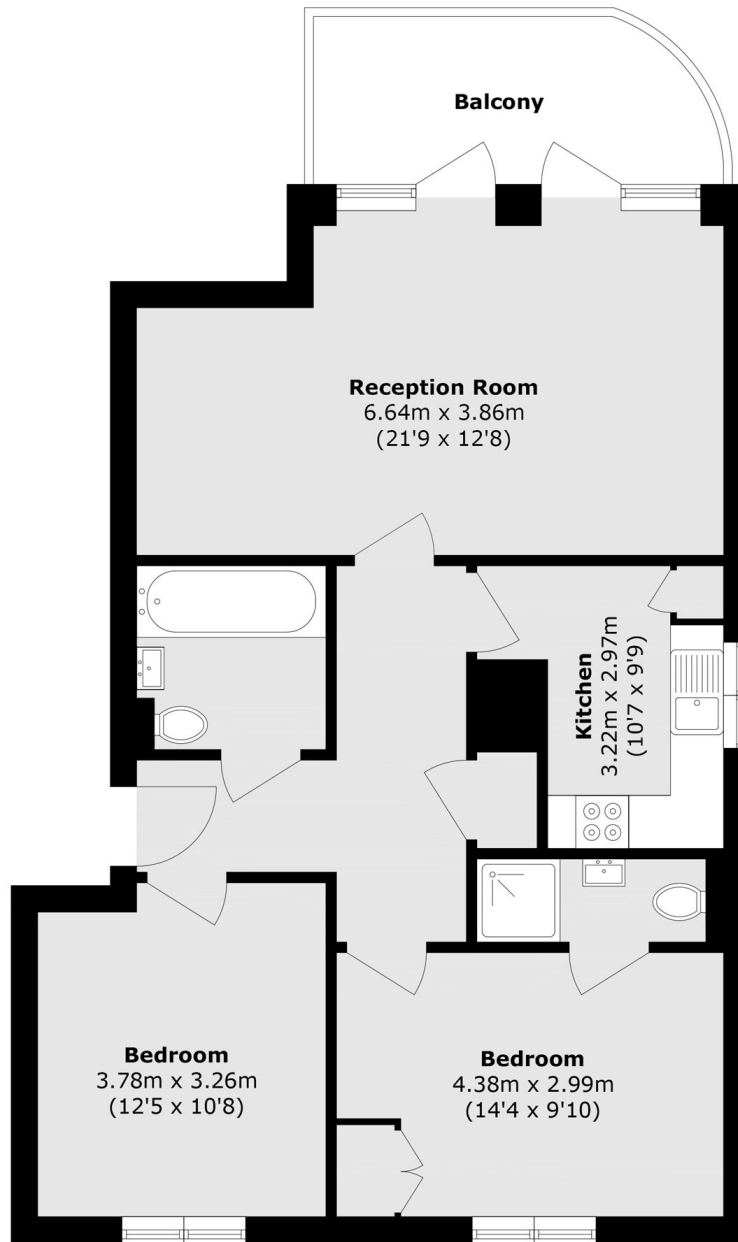
This is an immaculate larger than average two double bedroom, two bathroom, modern apartment with a large reception room, separate kitchen, a private balcony, and access to communal grounds. There is also a parking space available by separate negotiation

Middleton Court located within a short distance to Wimbledon Town Centre, with easy access to London's West End via District Line, overground station, tram link, bus routes and excellent restaurants, bars and shopping facilities.

### Features

- Modern Gated Development
- Two Double Bedrooms
- Two Bathrooms
- Private Balcony
- Secure Bike Storage
- Parking Space Available

Worple Road,  
London, SW20



Total area (approx.): 77.2 sq. m (830.9 sq. ft)  
Balcony area (approx.): 8.2 sq. m (88.2 sq. ft)