



Clements estate agents



## Frome Square, Hemel Hempstead, HP2 6EH

**£400,000**

Situated in this popular Cul de Sac in Grovehill is this well presented terraced family home.

Boasting three bedrooms, modern re fitted kitchen, living room, dining room, re fitted contemporary bathroom suite, gas central heating, double glazing downstairs cloakroom and workshop.

Located within easy reach of the local shops, schools and transport facilities, Hemel Hempstead town centre and the M1, M25 and A41 road links.

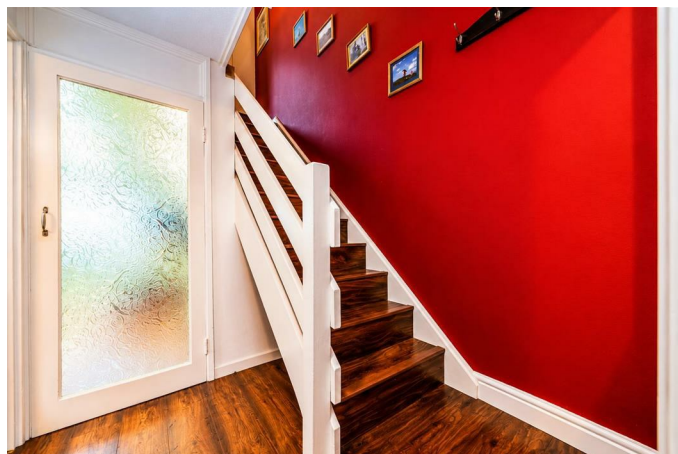
Nestled in the charming area of Frome Square, Grovehill, this well-presented three-bedroom terraced family home offers a delightful blend of comfort and modern living. Upon entering, you are welcomed into a spacious living room that flows seamlessly into a separate dining room, providing an ideal space for family gatherings and entertaining guests.

The heart of the home is undoubtedly the modern re-fitted kitchen, which boasts contemporary fixtures and ample storage, making it a joy for any home cook. The property also features a stylishly re-fitted bathroom suite, ensuring that both functionality and aesthetics are catered for. Additionally, a convenient downstairs cloakroom adds to the practicality of this lovely home.

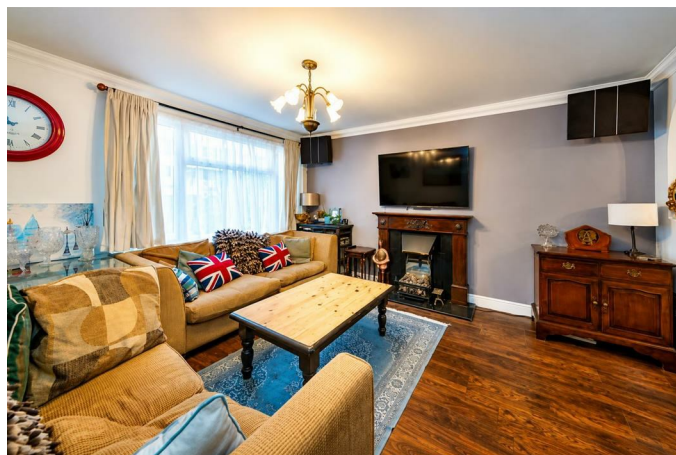
With three well-proportioned bedrooms, this property is perfect for families or those looking for extra space. The house benefits from gas central heating and double glazing, ensuring warmth and comfort throughout the colder months.

This terraced home is not only a wonderful living space but also a fantastic opportunity to enjoy the vibrant community of Grovehill. With local amenities and parks nearby, it is an ideal location for families and individuals alike. Do not miss the chance to make this charming property your new home.

### Entrance Hall



### Living Room 14'6 x 11'7 (4.42m x 3.53m)



### Dining Room 9'7 x 8'5 (2.92m x 2.57m)



### Modern Fitted Kitchen 12'5 x 9'0 (3.78m x 2.74m)



**Downstairs Cloakroom**



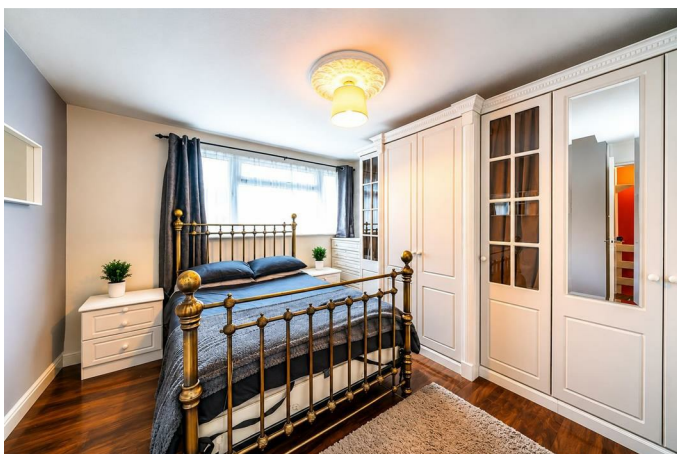
**Bedroom Three 9'5 x 6'5 (2.87m x 1.96m)**



**Workshop 8'4 x 6'1 (2.54m x 1.85m)**

**Landing**

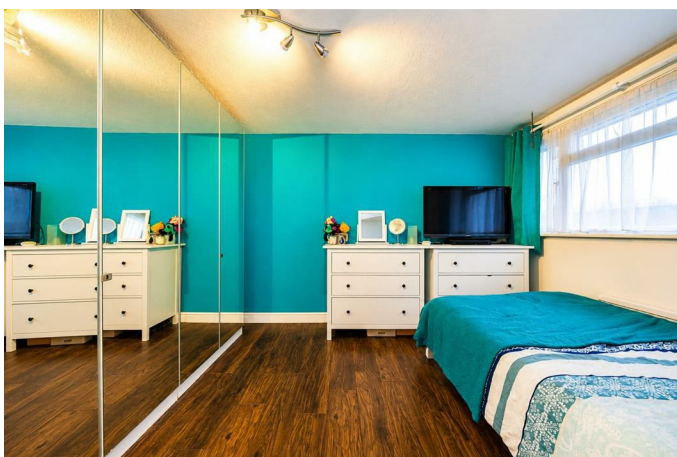
**Bedroom One 12'7 x 11'4 (3.84m x 3.45m)**



**Bathroom**



**Bedroom Two 10'7 x 9'3 (3.23m x 2.82m)**

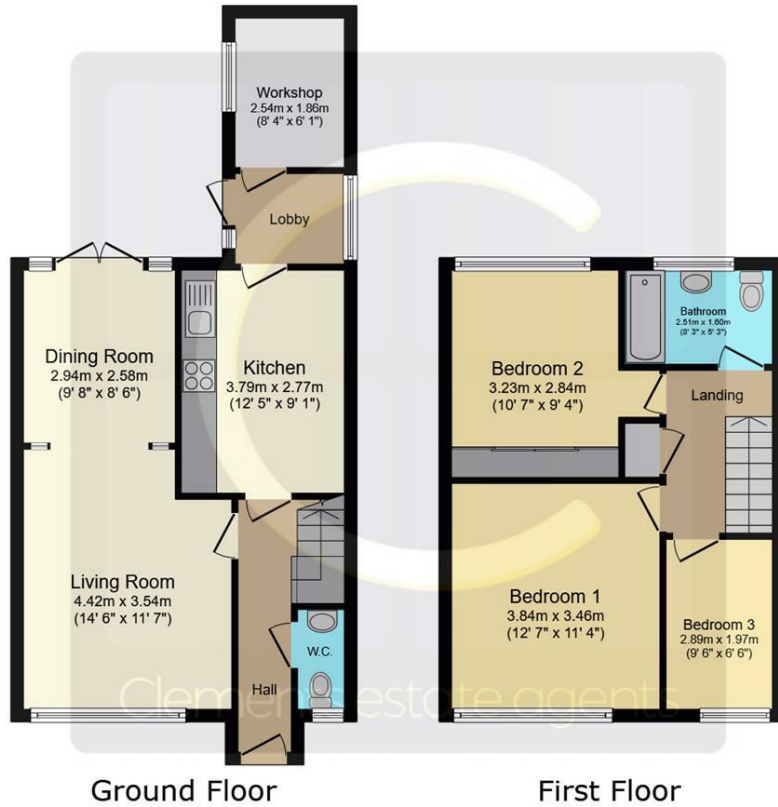


**Front Garden**

**Rear Garden**



# Floor Plan

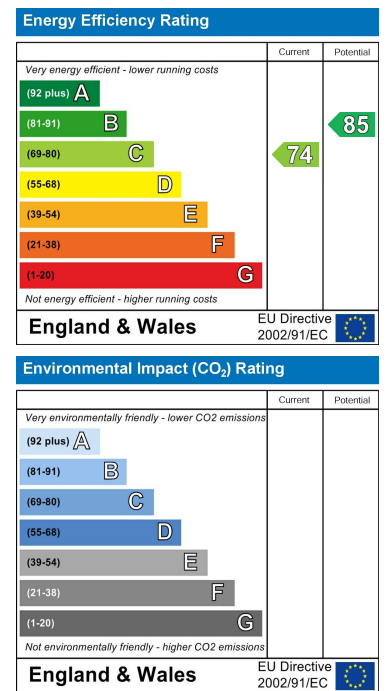


This floor plan is for illustrative purposes only. It is not drawn to scale. Any measurements, floor areas (including any total floor area), openings and orientations are approximate. No details are guaranteed, they cannot be relied upon for any purpose and do not form any part of any agreement. No liability is taken for any error, omission or misstatement. A party must rely upon its own inspection(s). Powered by www.Propertybox.io

# Area Map



# Energy Efficiency Graph



These particulars, whilst believed to be accurate are set out as a general outline only for guidance and do not constitute any part of an offer or contract. Intending purchasers should not rely on them as statements of representation of fact, but must satisfy themselves by inspection or otherwise as to their accuracy. No person in this firm's employment has the authority to make or give any representation or warranty in respect of the property.

45 Marlowes, Hemel Hempstead, Hertfordshire, HP1 1LD

Tel: 01442 214151 Email: sales@clementsestateagents.co.uk <https://www.clementsestateagents.co.uk>